

## Product datasheet for **TA370802**

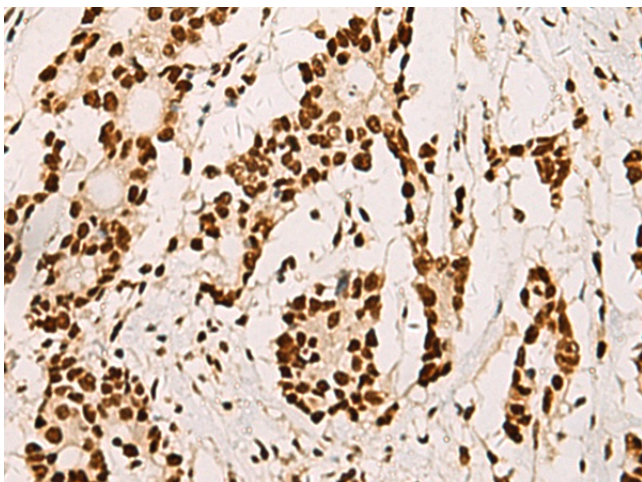
### ELF5 Rabbit Polyclonal Antibody

#### Product data:

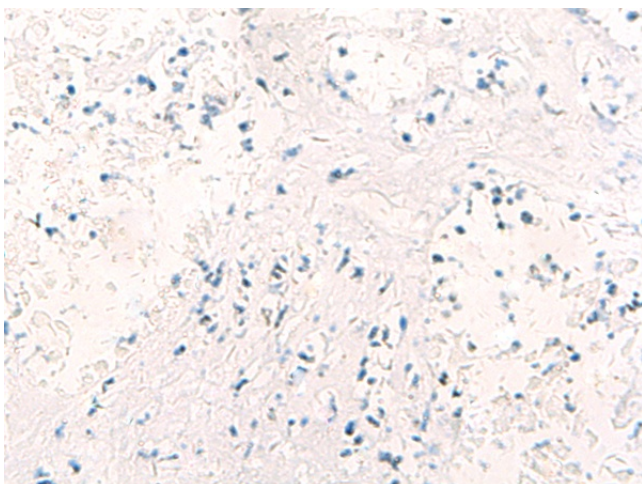
Product Type:	Primary Antibodies
Applications:	IHC
Recommended Dilution:	IHC: 50-200 Positive control: Human colorectal cancer Predicted cell location: Nucleus
Reactivity:	Human, Mouse
Host:	Rabbit
Isotype:	IgG
Clonality:	Polyclonal
Immunogen:	Fusion protein of human ELF5
Formulation:	pH7.4 PBS, 0.05% NaN <sub>3</sub> , 40% Glycerol
Concentration:	lot specific
Purification:	Antigen affinity purification
Conjugation:	Unconjugated
Storage:	Store at -20°C.
Stability:	1 year
Gene Name:	E74 like ETS transcription factor 5
Database Link:	<a href="#">Entrez Gene 2001 Human Q9UKW6</a>
Background:	The protein encoded by this gene is a member of an epithelium-specific subclass of the Ets transcription factor family. In addition to its role in regulating the later stages of terminal differentiation of keratinocytes, it appears to regulate a number of epithelium-specific genes found in tissues containing glandular epithelium such as salivary gland and prostate. It has very low affinity to DNA due to its negative regulatory domain at the amino terminus. Several alternatively spliced transcript variants encoding different isoforms have been described for this gene.
Synonyms:	ESE-2; ESE2



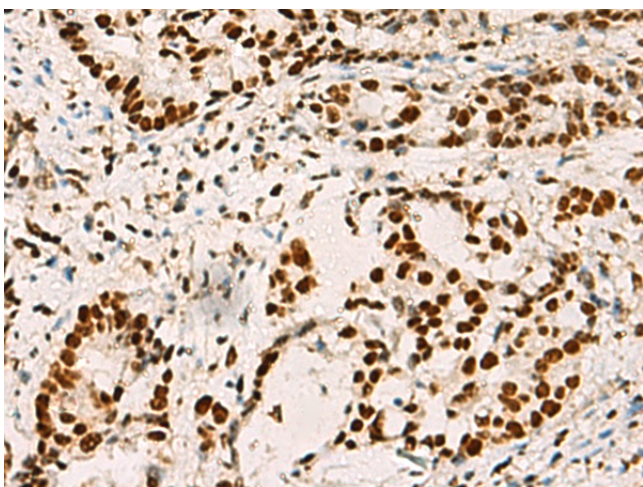
[View online »](#)

**Product images:**

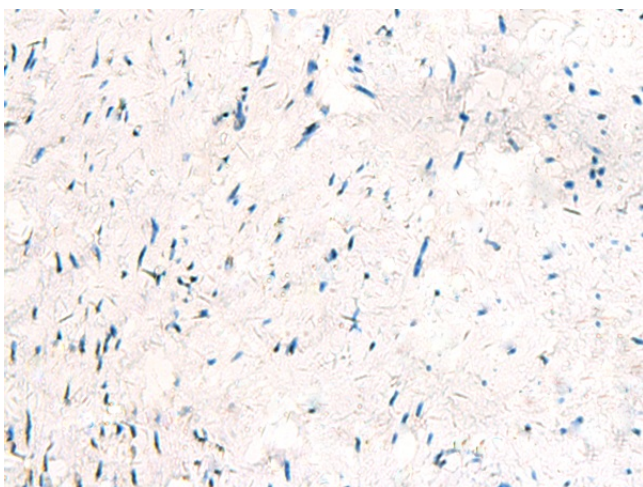
Immunohistochemistry of paraffin-embedded Human colorectal cancer tissue using TA370802 (ELF5 Antibody) at dilution 1/70 (Original magnification:  $\times 200$ )



Immunohistochemistry of paraffin-embedded Human colorectal cancer tissue using TA370802 (ELF5 Antibody) at dilution 1/70, treated with fusion protein. (Original magnification:  $\times 200$ )



Immunohistochemistry of paraffin-embedded Human cervical cancer tissue using TA370802 (ELF5 Antibody) at dilution 1/70 (Original magnification: ×200)



Immunohistochemistry of paraffin-embedded Human cervical cancer tissue using TA370802 (ELF5 Antibody) at dilution 1/70, treated with fusion protein. (Original magnification: ×200)