

Product datasheet for **TA370799S**

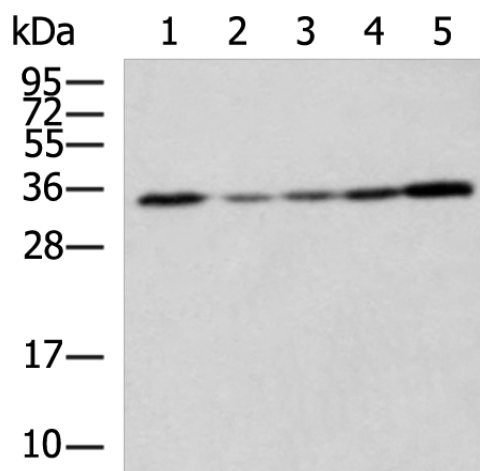
Syntaxin 6 (STX6) Rabbit Polyclonal Antibody

Product data:

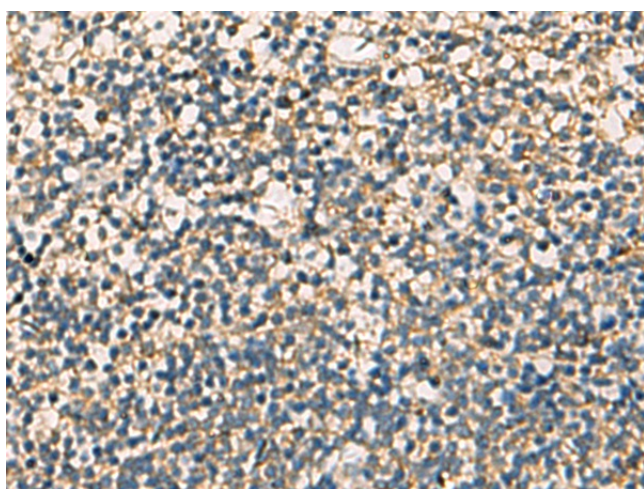
Product Type:	Primary Antibodies
Applications:	IHC, WB
Recommended Dilution:	WB: 1000-5000 WB positive control: SKOV3 cell, NIH/3T3 cell, Mouse brain tissue, Hela and 293T cell lysates IHC: 50-200 Positive control: Human tonsil Predicted cell location: Cytoplasm
Reactivity:	Human, Mouse, Rat
Host:	Rabbit
Isotype:	IgG
Clonality:	Polyclonal
Immunogen:	Fusion protein of human STX6
Formulation:	pH7.4 PBS, 0.05% NaN ₃ , 40% Glycerol
Purification:	Antigen affinity purification
Conjugation:	Unconjugated
Storage:	Store at -20°C.
Stability:	1 year
Predicted Protein Size:	29 kDa
Gene Name:	syntaxin 6
Database Link:	Entrez Gene 10228 Human O43752
Background:	Involved in intracellular vesicle trafficking.
Synonyms:	STX6



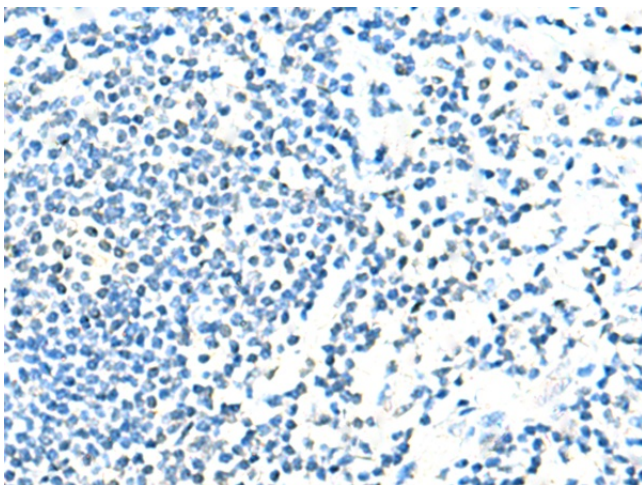
[View online »](#)

Product images:


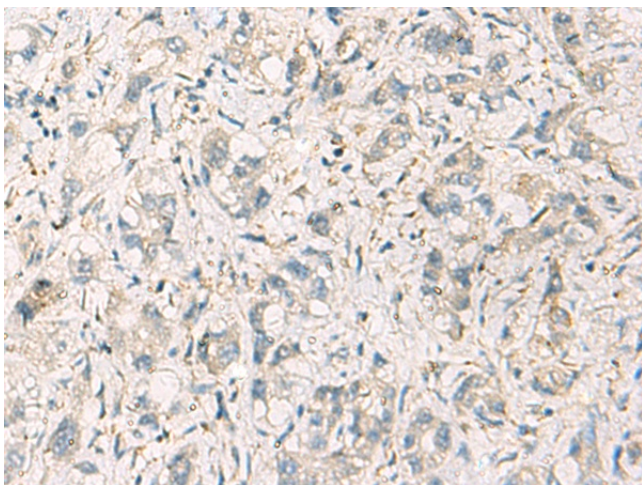
Gel: 12%SDS-PAGE
 Lysate: 40 µg
 Lane 1-5: SKOV3 cell
 NIH/3T3 cell
 Mouse brain tissue
 HeLa and 293T cell lysates
 Primary antibody: [TA370799] (STX6 Antibody) at
 dilution 1/900
 Secondary antibody: Goat anti rabbit IgG at
 1/5000 dilution
 Exposure time: 3 seconds



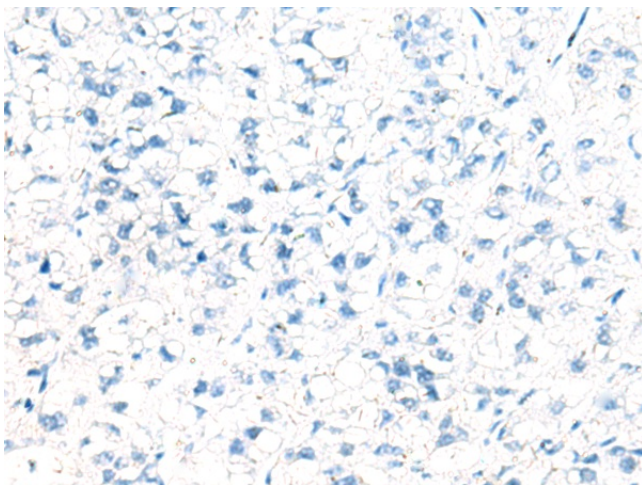
Immunohistochemistry of paraffin-embedded
 Human tonsil tissue using [TA370799] (STX6
 Antibody) at dilution 1/60 (Original magnification:
 ×200)



Immunohistochemistry of paraffin-embedded Human tonsil tissue using [TA370799] (STX6 Antibody) at dilution 1/60, treated with fusion protein. (Original magnification: $\times 200$)



Immunohistochemistry of paraffin-embedded Human liver cancer tissue using [TA370799] (STX6 Antibody) at dilution 1/60 (Original magnification: $\times 200$)



Immunohistochemistry of paraffin-embedded Human liver cancer tissue using [TA370799] (STX6 Antibody) at dilution 1/60, treated with fusion protein. (Original magnification: $\times 200$)