

Product datasheet for **TA370794S**

PLEKHF2 Rabbit Polyclonal Antibody

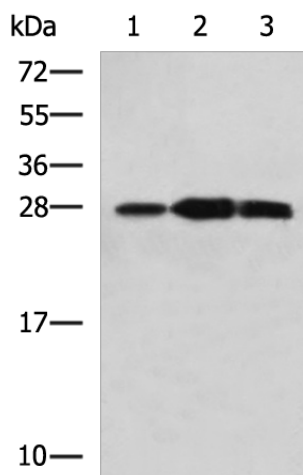
Product data:

Product Type:	Primary Antibodies
Applications:	IHC, WB
Recommended Dilution:	WB: 1000-5000 WB positive control: Mouse kidney tissue, Raji and Jurkat cell lysates IHC: 100-300 Positive control: Human tonsil Predicted cell location: Cytoplasm
Reactivity:	Human, Mouse
Host:	Rabbit
Isotype:	IgG
Clonality:	Polyclonal
Immunogen:	Fusion protein of human PLEKHF2
Formulation:	pH7.4 PBS, 0.05% NaN ₃ , 40% Glycerol
Purification:	Antigen affinity purification
Conjugation:	Unconjugated
Storage:	Store at -20°C.
Stability:	1 year
Predicted Protein Size:	28 kDa
Gene Name:	pleckstrin homology and FYVE domain containing 2
Database Link:	Entrez Gene 79666 Human Q9H8W4
Background:	May play a role in early endosome fusion upstream of RAB5, hence regulating receptor trafficking and fluid-phase transport. Enhances cellular sensitivity to TNF-induced apoptosis (PubMed:18288467).
Synonyms:	FLJ13187; Phafin-2; PHAFIN2; ZFYVE18

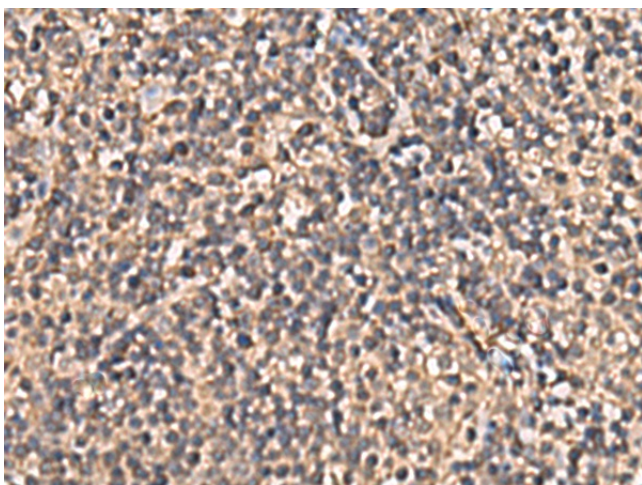


[View online »](#)

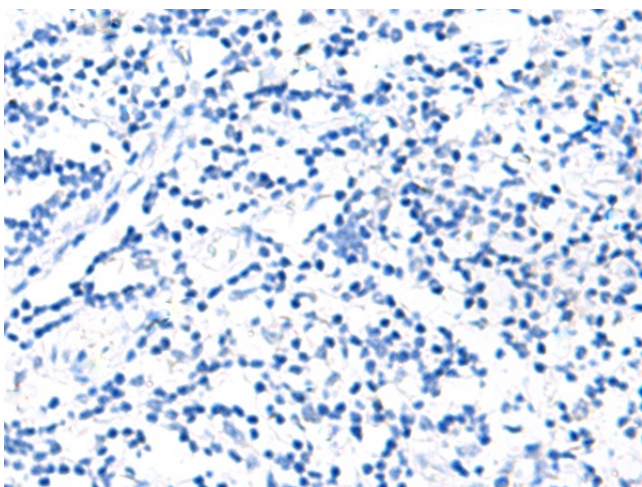
Product images:



Gel: 12%SDS-PAGE
 Lysate: 40 µg
 Lane 1-3: Mouse kidney tissue
 Raji and Jurkat cell lysates
 Primary antibody: [TA370794] (PLEKHF2
 Antibody) at dilution 1/1400
 Secondary antibody: Goat anti rabbit IgG at
 1/5000 dilution
 Exposure time: 1 minute



Immunohistochemistry of paraffin-embedded
 Human tonsil tissue using [TA370794] (PLEKHF2
 Antibody) at dilution 1/90 (Original magnification:
 ×200)



Immunohistochemistry of paraffin-embedded Human tonsil tissue using [TA370794] (PLEKHF2 Antibody) at dilution 1/90, treated with fusion protein. (Original magnification: ×200)