

## Product datasheet for **TA370792**

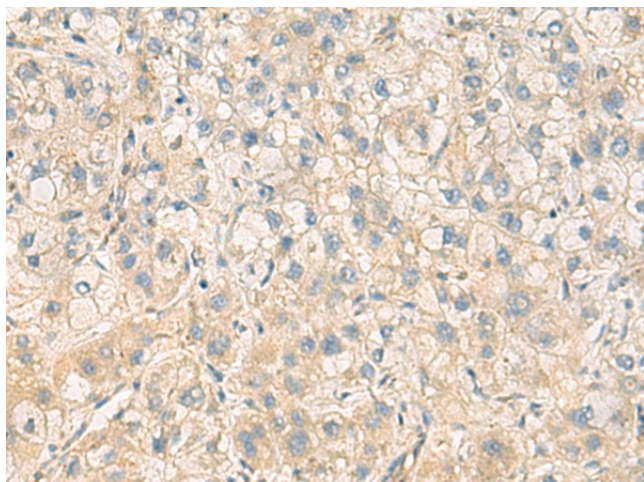
### PPM1M Rabbit Polyclonal Antibody

#### Product data:

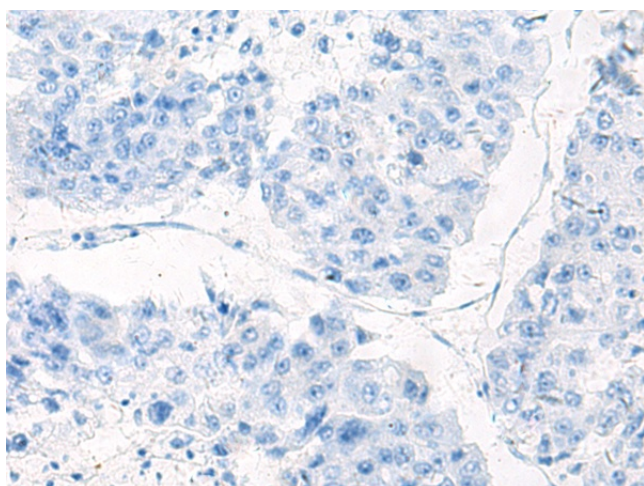
Product Type:	Primary Antibodies
Applications:	IHC
Recommended Dilution:	IHC: 100-300 Positive control: Human liver cancer Predicted cell location: Cytoplasm
Reactivity:	Human, Mouse
Host:	Rabbit
Isotype:	IgG
Clonality:	Polyclonal
Immunogen:	Fusion protein of human PPM1M
Formulation:	pH7.4 PBS, 0.05% NaN <sub>3</sub> , 40% Glycerol
Concentration:	lot specific
Purification:	Antigen affinity purification
Conjugation:	Unconjugated
Storage:	Store at -20°C.
Stability:	1 year
Gene Name:	protein phosphatase, Mg <sup>2+</sup> /Mn <sup>2+</sup> dependent 1M
Database Link:	<a href="#">Entrez Gene 132160 Human Q96MI6</a>
Background:	PPM1M is a member of the PP2C family of Ser/Thr protein phosphatases. PP2C family members are known to be negative regulators of cell stress response pathways. This phosphatase was identified as an interacting protein of Rho guanine nucleotide exchange factors (PIX). PIX proteins are regulators of p21/Cdc42/Rac1-activated kinase 1 (PAK1), a protein kinase mediating biological effects downstream of Rho GTPases. This phosphatase has been shown to block the effects of PAK, and thus inhibit actin stress fiber breakdown and morphological changes driven by cell division cycle 42 (CDC42).
Synonyms:	FLJ32332; PP2C-eta; PP2CE; PP2Ceta; PPM1E



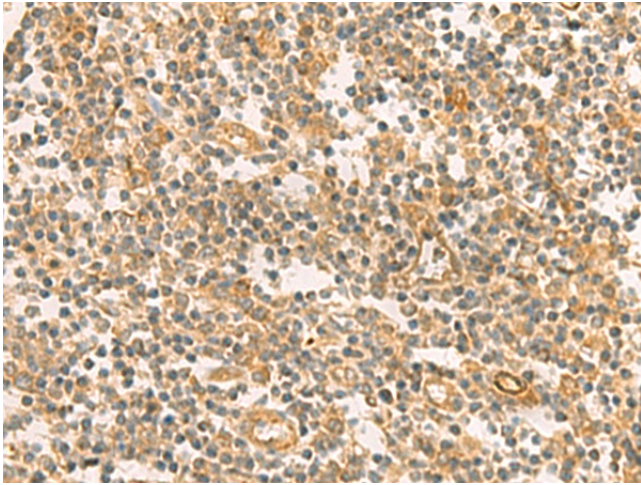
[View online »](#)

**Product images:**

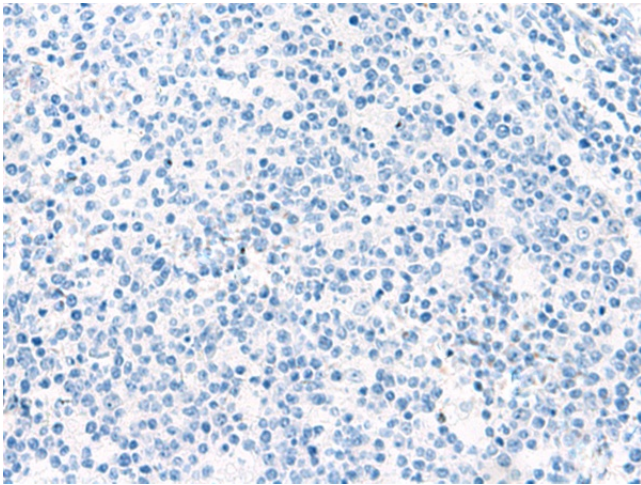
Immunohistochemistry of paraffin-embedded Human liver cancer tissue using TA370792 (PPM1M Antibody) at dilution 1/100 (Original magnification:  $\times 200$ )



Immunohistochemistry of paraffin-embedded Human liver cancer tissue using TA370792 (PPM1M Antibody) at dilution 1/100, treated with fusion protein. (Original magnification:  $\times 200$ )



Immunohistochemistry of paraffin-embedded Human tonsil tissue using TA370792 (PPM1M Antibody) at dilution 1/100 (Original magnification:  $\times 200$ )



Immunohistochemistry of paraffin-embedded Human tonsil tissue using TA370792 (PPM1M Antibody) at dilution 1/100, treated with fusion protein. (Original magnification:  $\times 200$ )