

Product datasheet for **TA370791**

Proteasome subunit alpha type 6 (PSMA6) Rabbit Polyclonal Antibody

Product data:

Product Type:	Primary Antibodies
Applications:	IHC, WB
Recommended Dilution:	WB: 1000-5000 WB positive control: A375, HL60 cell, Mouse skeletal muscle tissue, Jurkat, 293T cell lysates IHC: 100-300 Positive control: Human cervical cancer Predicted cell location: Cytoplasm
Reactivity:	Human, Mouse, Rat
Host:	Rabbit
Isotype:	IgG
Clonality:	Polyclonal
Immunogen:	Fusion protein of human PSMA6
Formulation:	pH7.4 PBS, 0.05% NaN ₃ , 40% Glycerol
Concentration:	lot specific
Purification:	Antigen affinity purification
Conjugation:	Unconjugated
Storage:	Store at -20°C.
Stability:	1 year
Predicted Protein Size:	27 kDa
Gene Name:	proteasome subunit alpha 6
Database Link:	Entrez Gene 5687 Human P60900



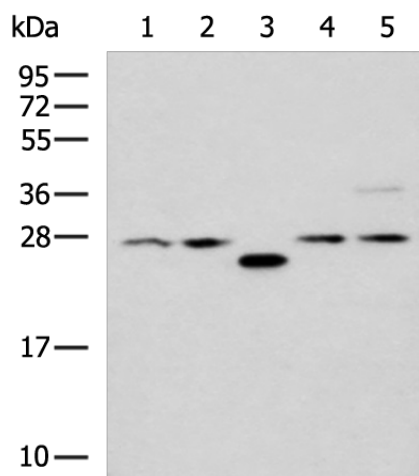
[View online »](#)

Background:

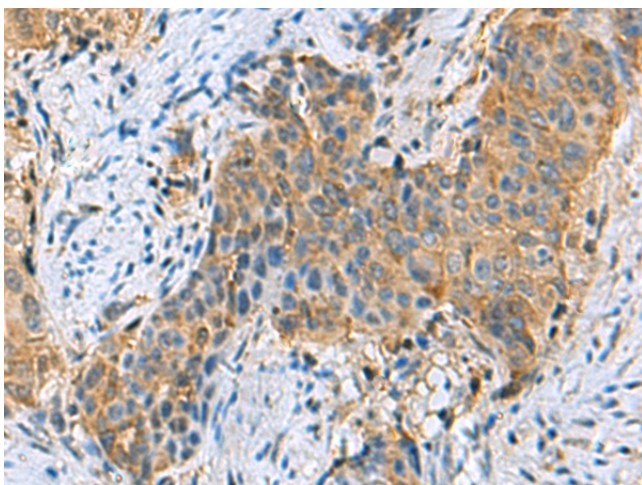
The proteasome is a multicatalytic proteinase complex with a highly ordered ring-shaped 20S core structure. The core structure is composed of 4 rings of 28 non-identical subunits; 2 rings are composed of 7 alpha subunits and 2 rings are composed of 7 beta subunits. Proteasomes are distributed throughout eukaryotic cells at a high concentration and cleave peptides in an ATP/ubiquitin-dependent process in a non-lysosomal pathway. An essential function of a modified proteasome, the immunoproteasome, is the processing of class I MHC peptides. This gene encodes a member of the peptidase T1A family, that is a 20S core alpha subunit. Multiple transcript variants encoding several different isoforms have been found for this gene. A pseudogene has been identified on the Y chromosome.

Synonyms:

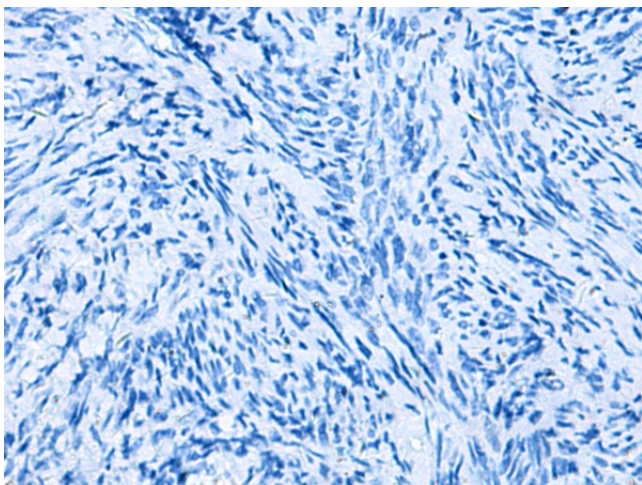
IOTA; MGC2333; MGC22756; MGC23846; p27K; PROS-27; PROS27

Product images:


Gel: 12%SDS-PAGE
 Lysate: 40 µg
 Lane 1-5: A375
 HL60 cell
 Mouse skeletal muscle tissue
 Jurkat
 293T cell lysates
 Primary antibody: TA370791 (PSMA6 Antibody) at dilution 1/1000
 Secondary antibody: Goat anti rabbit IgG at 1/5000 dilution
 Exposure time: 90 seconds



Immunohistochemistry of paraffin-embedded Human cervical cancer tissue using TA370791 (PSMA6 Antibody) at dilution 1/90 (Original magnification: ×200)



Immunohistochemistry of paraffin-embedded Human cervical cancer tissue using TA370791 (PSMA6 Antibody) at dilution 1/90, treated with fusion protein. (Original magnification: ×200)