

Product datasheet for **TA370788**

PREPL Rabbit Polyclonal Antibody

Product data:

Product Type:	Primary Antibodies
Applications:	IHC, WB
Recommended Dilution:	WB: 500-2000 WB positive control: RAW264.7 cell lysate IHC: 50-200 Positive control: Human esophagus cancer Predicted cell location: Cytoplasm
Reactivity:	Human, Mouse, Rat
Host:	Rabbit
Isotype:	IgG
Clonality:	Polyclonal
Immunogen:	Fusion protein of human PREPL
Formulation:	pH7.4 PBS, 0.05% NaN ₃ , 40% Glycerol
Concentration:	lot specific
Purification:	Antigen affinity purification
Conjugation:	Unconjugated
Storage:	Store at -20°C.
Stability:	1 year
Predicted Protein Size:	84 kDa
Gene Name:	prolyl endopeptidase-like
Database Link:	Entrez Gene 9581 Human Q4J6C6
Background:	The protein encoded by this gene belongs to the prolyl oligopeptidase subfamily of serine peptidases. Mutations in this gene have been associated with hypotonia-cystinuria syndrome, also known as the 2p21 deletion syndrome. Several alternatively spliced transcript variants encoding either the same or different isoforms have been described for this gene.

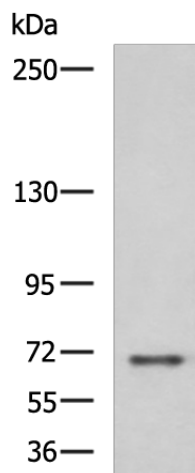


[View online »](#)

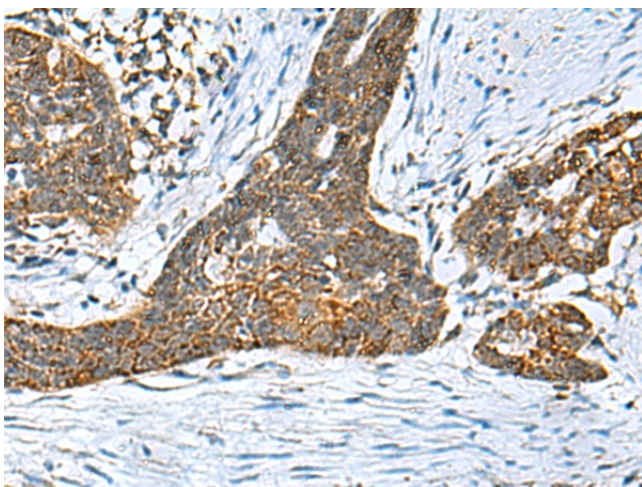
Synonyms:

FLJ16627; KIAA0436; OTTHUMP00000202420; OTTHUMP00000202421;
OTTHUMP00000202424; OTTHUMP00000202425; OTTHUMP00000202426;
Prolylendopeptidase-like

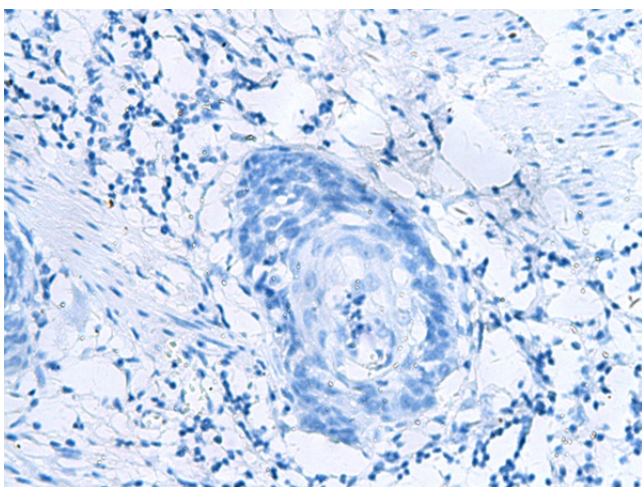
Product images:



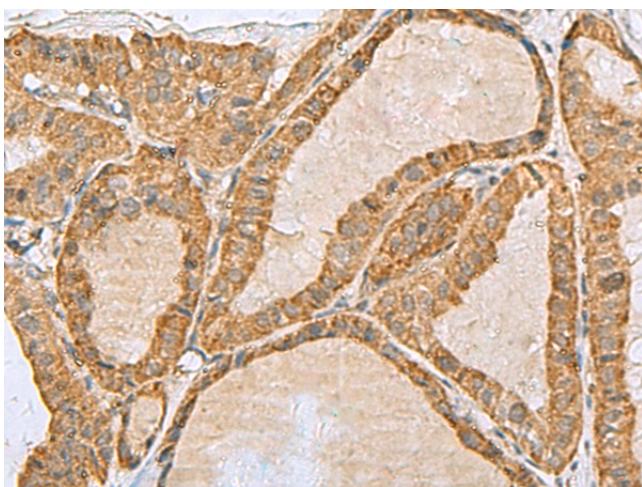
Gel: 6%SDS-PAGE
Lysate: 40 μ g
Lane: RAW264.7 cell lysate
Primary antibody: TA370788 (PREPL Antibody) at dilution 1/800
Secondary antibody: Goat anti rabbit IgG at 1/5000 dilution
Exposure time: 3 minutes



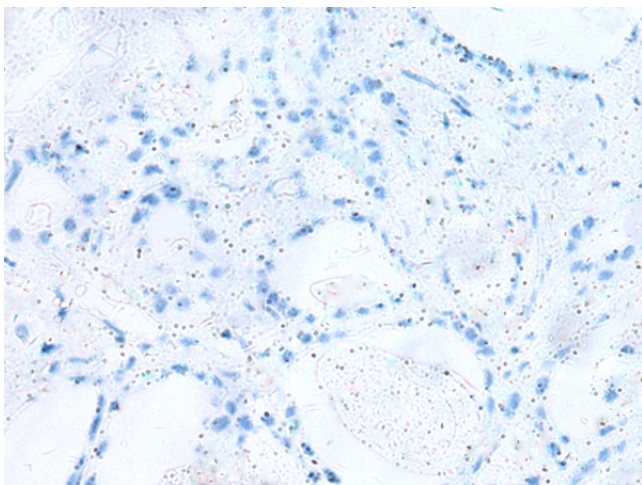
Immunohistochemistry of paraffin-embedded Human esophagus cancer tissue using TA370788 (PREPL Antibody) at dilution 1/55 (Original magnification: \times 200)



Immunohistochemistry of paraffin-embedded Human esophagus cancer tissue using TA370788 (PREPL Antibody) at dilution 1/55, treated with fusion protein. (Original magnification: ×200)



Immunohistochemistry of paraffin-embedded Human thyroid cancer tissue using TA370788 (PREPL Antibody) at dilution 1/55 (Original magnification: ×200)



Immunohistochemistry of paraffin-embedded Human thyroid cancer tissue using TA370788 (PREPL Antibody) at dilution 1/55, treated with fusion protein. (Original magnification: ×200)