

Product datasheet for **TA370776**

RPL10A Rabbit Polyclonal Antibody

Product data:

Product Type:	Primary Antibodies
Applications:	IHC, WB
Recommended Dilution:	WB: 500-2000 WB positive control: Rat liver tissue, Mouse kidney tissue, Mouse lung tissue, HUVEC, Jurkat, HeLa, HepG2 cell lysates IHC: 50-200 Positive control: Human esophagus cancer Predicted cell location: Cytoplasm
Reactivity:	Human, Mouse, Rat
Host:	Rabbit
Isotype:	IgG
Clonality:	Polyclonal
Immunogen:	Fusion protein of human RPL10A
Formulation:	pH7.4 PBS, 0.05% NaN ₃ , 40% Glycerol
Concentration:	lot specific
Purification:	Antigen affinity purification
Conjugation:	Unconjugated
Storage:	Store at -20°C.
Stability:	1 year
Predicted Protein Size:	25 kDa
Gene Name:	ribosomal protein L10a
Database Link:	Entrez Gene 4736 Human P62906



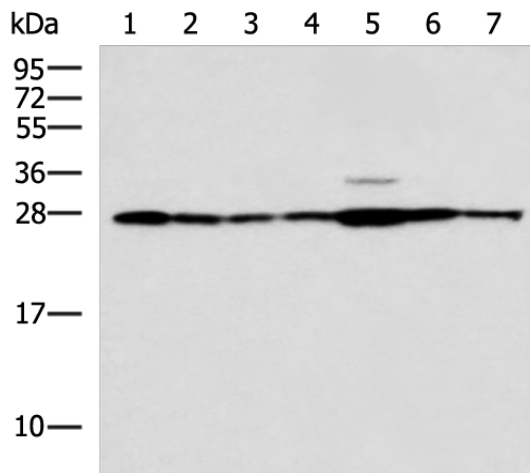
[View online »](#)

Background:

Ribosomes, the organelles that catalyze protein synthesis, consist of a small 40S subunit and a large 60S subunit. Together these subunits are composed of 4 RNA species and approximately 80 structurally distinct proteins. This gene encodes a ribosomal protein that is a component of the 60S subunit. The protein belongs to the L1P family of ribosomal proteins. It is located in the cytoplasm. The expression of this gene is downregulated in the thymus by cyclosporin-A (CsA), an immunosuppressive drug. Studies in mice have shown that the expression of the ribosomal protein L10a gene is downregulated in neural precursor cells during development. This gene previously was referred to as NEDD6 (neural precursor cell expressed, developmentally downregulated 6), but it has been renamed RPL10A (ribosomal protein 10a). As is typical for genes encoding ribosomal proteins, there are multiple processed pseudogenes of this gene dispersed through the genome.

Synonyms:

Csa-19; NEDD-6; NEDD6

Product images:


Gel: 12%SDS-PAGE

Lysate: 40 µg

Lane 1-7: Rat liver tissue

Mouse kidney tissue

Mouse lung tissue

HUVEC

Jurkat

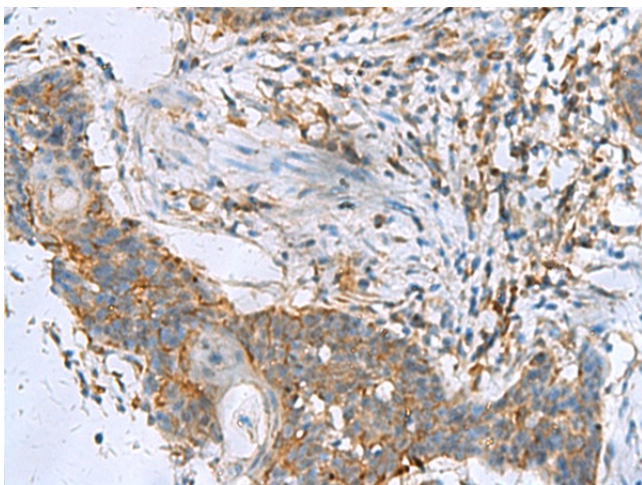
Hela

HepG2 cell lysates

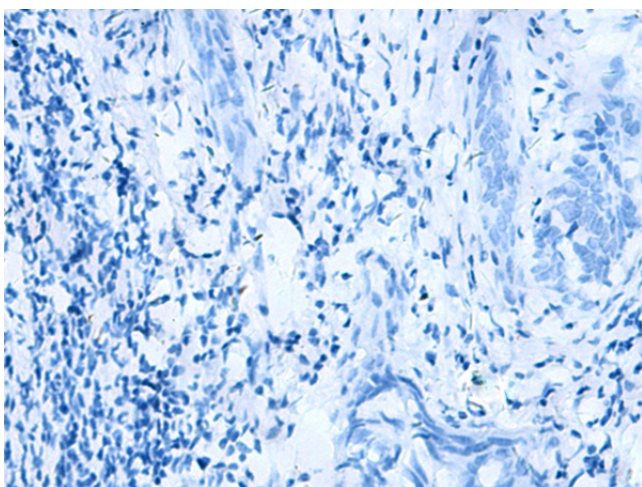
Primary antibody: TA370776 (RPL10A Antibody)
at dilution 1/700

Secondary antibody: Goat anti rabbit IgG at
1/5000 dilution

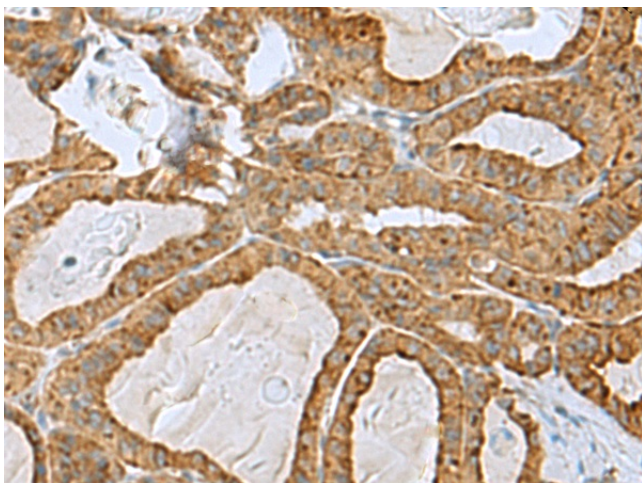
Exposure time: 7 seconds



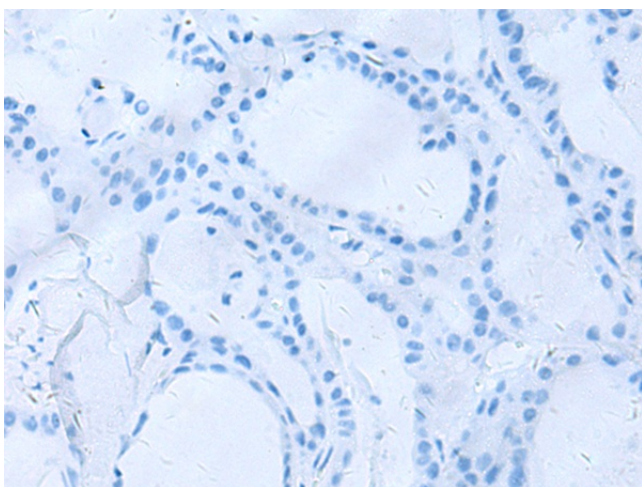
Immunohistochemistry of paraffin-embedded Human esophagus cancer tissue using TA370776 (RPL10A Antibody) at dilution 1/50 (Original magnification: ×200)



Immunohistochemistry of paraffin-embedded Human esophagus cancer tissue using TA370776 (RPL10A Antibody) at dilution 1/50, treated with fusion protein. (Original magnification: ×200)



Immunohistochemistry of paraffin-embedded Human thyroid cancer tissue using TA370776 (RPL10A Antibody) at dilution 1/50 (Original magnification: ×200)



Immunohistochemistry of paraffin-embedded Human thyroid cancer tissue using TA370776 (RPL10A Antibody) at dilution 1/50, treated with fusion protein. (Original magnification: ×200)