

## Product datasheet for **TA370770S**

### **RAB38 Rabbit Polyclonal Antibody**

#### **Product data:**

|                         |   |
|-------------------------|---|
| Product Type:           | Primary Antibodies  |
| Applications:           | IHC, WB   |
| Recommended Dilution:   | WB: 500-2000<br>WB positive control: NIH/3T3 cell lysate<br>IHC: 50-200<br>Positive control: Human liver cancer<br>Predicted cell location: Cytoplasm |
| Reactivity:             | Human, Mouse  |
| Host:                   | Rabbit  |
| Isotype:                | IgG   |
| Clonality:              | Polyclonal  |
| Immunogen:              | Fusion protein of human RAB38   |
| Formulation:            | pH7.4 PBS, 0.05% NaN <sub>3</sub> , 40% Glycerol  |
| Purification:           | Antigen affinity purification   |
| Conjugation:            | Unconjugated  |
| Storage:                | Store at -20°C.   |
| Stability:              | 1 year  |
| Predicted Protein Size: | 24 kDa  |
| Gene Name:              | RAB38, member RAS oncogene family   |
| Database Link:          | <a href="#">Entrez Gene 23682 Human P57729</a>  |



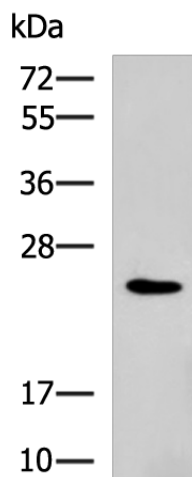
[View online »](#)

**Background:**

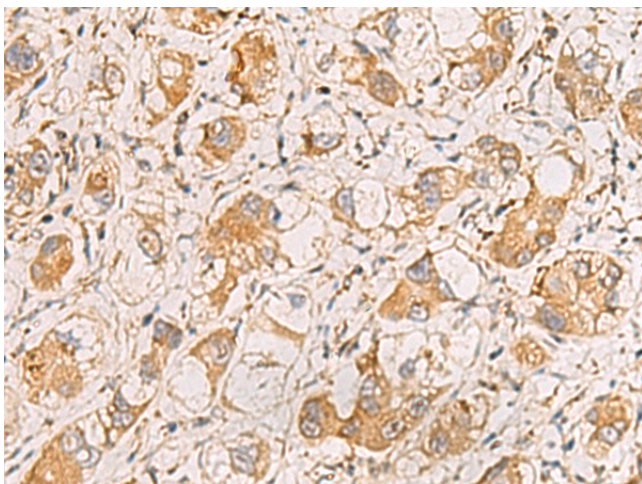
May be involved in melanosomal transport and docking. Involved in the proper sorting of TYRP1. Involved in peripheral melanosomal distribution of TYRP1 in melanocytes; the function, which probably is implicating vesicle-trafficking, includes cooperation with ANKRD27 and VAMP7 (By similarity). Plays a role in the maturation of phagosomes that engulf pathogens, such as *S.aureus* and *M.tuberculosis* (PubMed:21255211). Plays an important role in the control of melanin production and melanosome biogenesis (PubMed:23084991). In concert with RAB32, regulates the proper trafficking of melanogenic enzymes TYR, TYRP1 and DCT/TYRP2 to melanosomes in melanocytes (By similarity).

**Synonyms:**

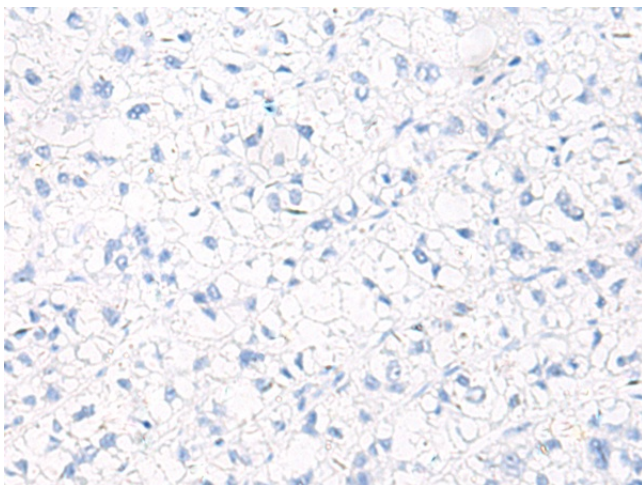
NY-MEL-1; rrGTPbp

**Product images:**

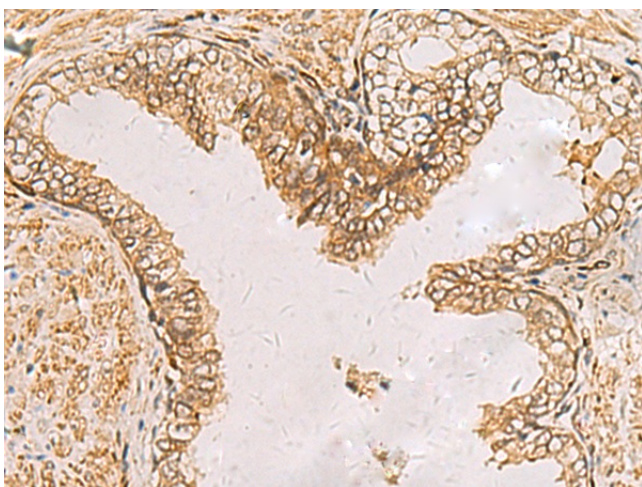
Gel: 12%SDS-PAGE  
Lysate: 40 µg  
Lane: NIH/3T3 cell lysate  
Primary antibody: [TA370770] (RAB38 Antibody) at dilution 1/900  
Secondary antibody: Goat anti rabbit IgG at 1/5000 dilution  
Exposure time: 1 minute



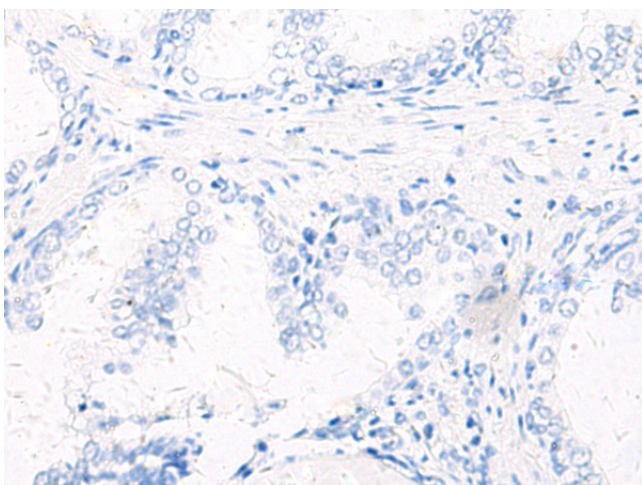
Immunohistochemistry of paraffin-embedded Human liver cancer tissue using [TA370770] (RAB38 Antibody) at dilution 1/60 (Original magnification: ×200)



Immunohistochemistry of paraffin-embedded Human liver cancer tissue using [TA370770] (RAB38 Antibody) at dilution 1/60, treated with fusion protein. (Original magnification: ×200)



Immunohistochemistry of paraffin-embedded Human prostate cancer tissue using [TA370770] (RAB38 Antibody) at dilution 1/60 (Original magnification: ×200)



Immunohistochemistry of paraffin-embedded Human prostate cancer tissue using [TA370770] (RAB38 Antibody) at dilution 1/60, treated with fusion protein. (Original magnification: ×200)