

Product datasheet for **TA370765S**

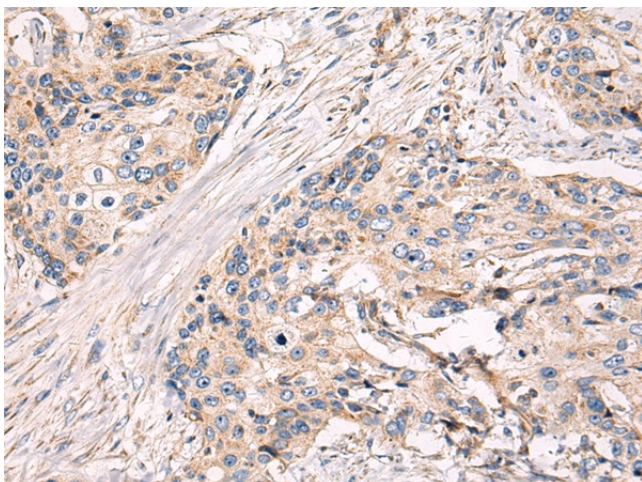
RAB18 Rabbit Polyclonal Antibody

Product data:

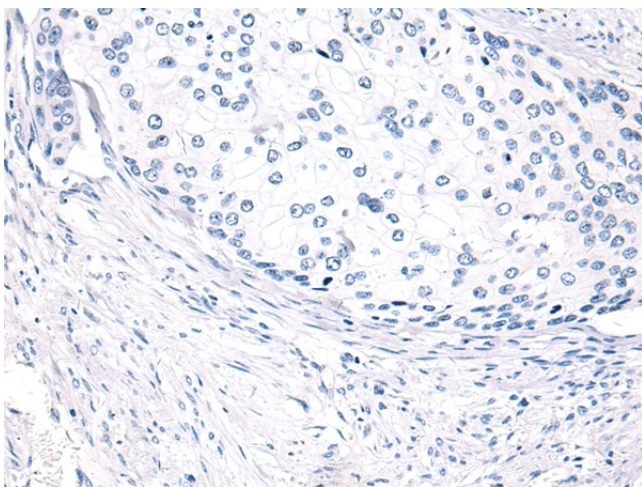
| | |
|------------------------------|--|
| Product Type: | Primary Antibodies |
| Applications: | IHC |
| Recommended Dilution: | IHC: 50-100 Positive control: Human cervical cancer Predicted cell location: Cytoplasm |
| Reactivity: | Human, Mouse, Rat |
| Host: | Rabbit |
| Isotype: | IgG |
| Clonality: | Polyclonal |
| Immunogen: | Fusion protein of human RAB18 |
| Formulation: | pH7.4 PBS, 0.05% NaN3, 40% Glycerol |
| Purification: | Antigen affinity purification |
| Conjugation: | Unconjugated |
| Storage: | Store at -20°C. |
| Stability: | 1 year |
| Gene Name: | RAB18, member RAS oncogene family |
| Database Link: | Entrez Gene 22931 Human Q9NP72 |
| Background: | The protein encoded by this gene is a member of a family of Ras-related small GTPases that regulate membrane trafficking in organelles and transport vesicles. Knockdown studies in zebrafish suggest that this protein may have a role in eye and brain development. Mutations in this gene are associated with Warburg micro syndrome type 3. Alternatively spliced transcript variants have been found for this gene. |
| Synonyms: | RAB18L11 |



[View online »](#)

Product images:

Immunohistochemistry of paraffin-embedded Human cervical cancer tissue using [TA370765] (RAB18 Antibody) at dilution 1/65 (Original magnification: $\times 200$)



Immunohistochemistry of paraffin-embedded Human cervical cancer tissue using [TA370765] (RAB18 Antibody) at dilution 1/65, treated with fusion protein. (Original magnification: $\times 200$)