

## Product datasheet for **TA370763S**

### NABP1 Rabbit Polyclonal Antibody

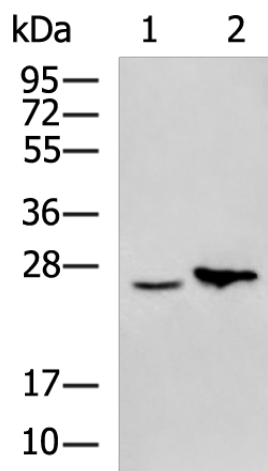
#### Product data:

Product Type:	Primary Antibodies
Applications:	IHC, WB
Recommended Dilution:	WB: 500-2000 WB positive control: Jurkat cell, Mouse liver tissue lysates IHC: 50-200 Positive control: Human esophagus cancer Predicted cell location: Nucleus
Reactivity:	Human, Mouse, Rat
Host:	Rabbit
Isotype:	IgG
Clonality:	Polyclonal
Immunogen:	Fusion protein of human NABP1
Formulation:	pH7.4 PBS, 0.05% NaN <sub>3</sub> , 40% Glycerol
Purification:	Antigen affinity purification
Conjugation:	Unconjugated
Storage:	Store at -20°C.
Stability:	1 year
Predicted Protein Size:	22 kDa
Gene Name:	nucleic acid binding protein 1
Database Link:	<a href="#">Entrez Gene 64859 Human Q96AH0</a>
Background:	Single-stranded DNA (ssDNA)-binding proteins, such as OBFC2A, are ubiquitous and essential for a variety of DNA metabolic processes, including replication, recombination, and detection and repair of damage (Richard et al., 2008 [PubMed 18449195]).
Synonyms:	OBFC2A; SOSS-B2; SSB2

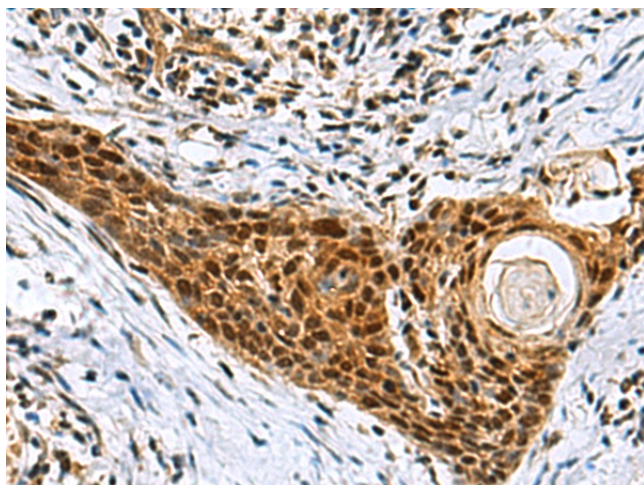


[View online »](#)

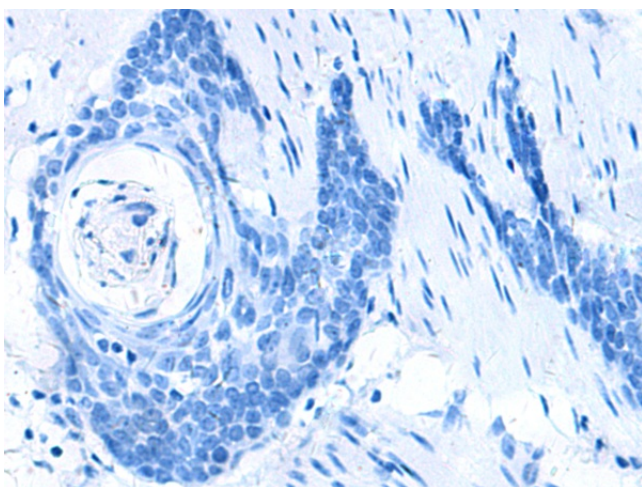
## Product images:



Gel: 12%SDS-PAGE  
Lysate: 40  $\mu$ g  
Lane 1-2: Jurkat cell  
Mouse liver tissue lysates  
Primary antibody: [TA370763] (NABP1 Antibody)  
at dilution 1/500  
Secondary antibody: Goat anti rabbit IgG at  
1/5000 dilution  
Exposure time: 5 minutes



Immunohistochemistry of paraffin-embedded  
Human esophagus cancer tissue using  
[TA370763] (NABP1 Antibody) at dilution 1/80  
(Original magnification:  $\times 200$ )



Immunohistochemistry of paraffin-embedded Human esophagus cancer tissue using [TA370763] (NABP1 Antibody) at dilution 1/80, treated with fusion protein. (Original magnification:  $\times 200$ )