

Product datasheet for **TA370763**

NABP1 Rabbit Polyclonal Antibody

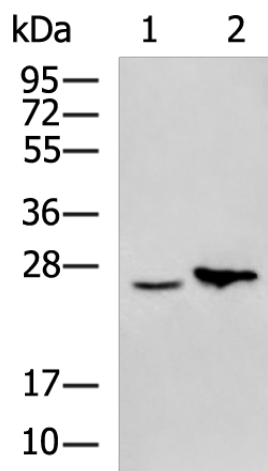
Product data:

Product Type:	Primary Antibodies
Applications:	IHC, WB
Recommended Dilution:	WB: 500-2000 WB positive control: Jurkat cell, Mouse liver tissue lysates IHC: 50-200 Positive control: Human esophagus cancer Predicted cell location: Nucleus
Reactivity:	Human, Mouse, Rat
Host:	Rabbit
Isotype:	IgG
Clonality:	Polyclonal
Immunogen:	Fusion protein of human NABP1
Formulation:	pH7.4 PBS, 0.05% NaN ₃ , 40% Glycerol
Concentration:	lot specific
Purification:	Antigen affinity purification
Conjugation:	Unconjugated
Storage:	Store at -20°C.
Stability:	1 year
Predicted Protein Size:	22 kDa
Gene Name:	nucleic acid binding protein 1
Database Link:	Entrez Gene 64859 Human Q96AH0
Background:	Single-stranded DNA (ssDNA)-binding proteins, such as OBFC2A, are ubiquitous and essential for a variety of DNA metabolic processes, including replication, recombination, and detection and repair of damage (Richard et al., 2008 [PubMed 18449195]).
Synonyms:	OBFC2A; SOSS-B2; SSB2

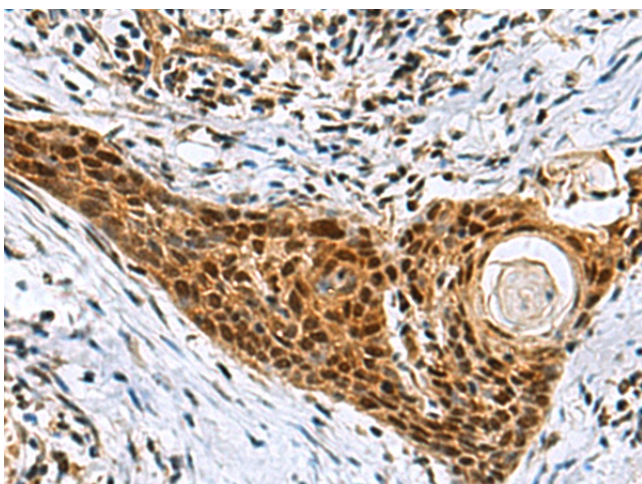


[View online »](#)

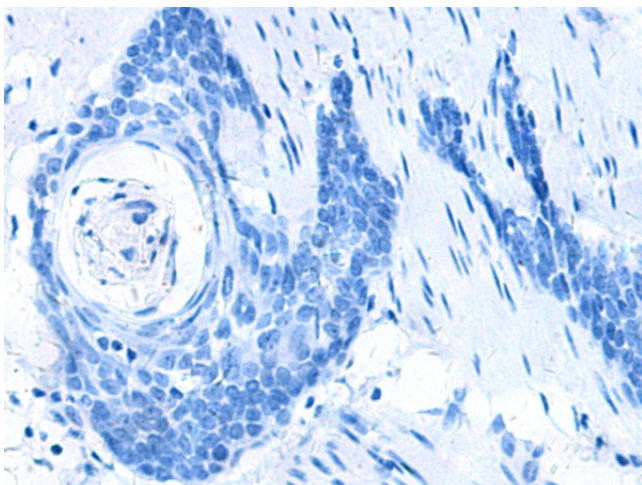
Product images:



Gel: 12%SDS-PAGE
Lysate: 40 μ g
Lane 1-2: Jurkat cell
Mouse liver tissue lysates
Primary antibody: TA370763 (NABP1 Antibody) at dilution 1/500
Secondary antibody: Goat anti rabbit IgG at 1/5000 dilution
Exposure time: 5 minutes



Immunohistochemistry of paraffin-embedded Human esophagus cancer tissue using TA370763 (NABP1 Antibody) at dilution 1/80 (Original magnification: $\times 200$)



Immunohistochemistry of paraffin-embedded Human esophagus cancer tissue using TA370763 (NABP1 Antibody) at dilution 1/80, treated with fusion protein. (Original magnification: ×200)