

Product datasheet for **TA370757**

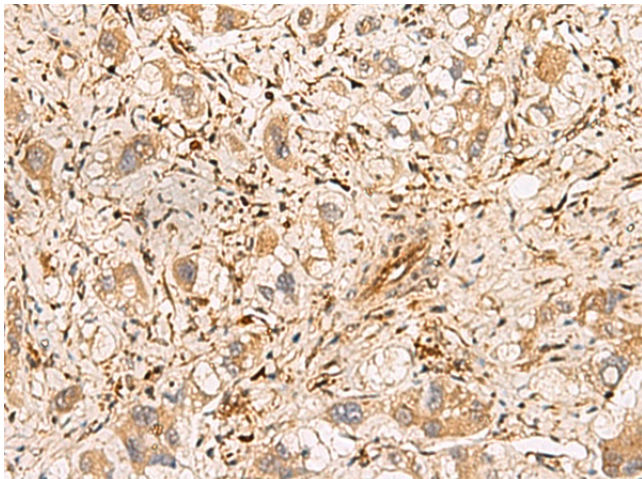
Phospholipase C beta 2 (PLCB2) Rabbit Polyclonal Antibody

Product data:

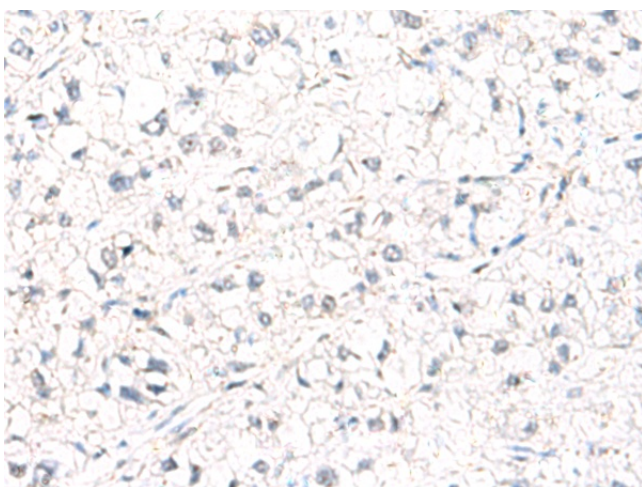
Product Type:	Primary Antibodies
Applications:	IHC
Recommended Dilution:	IHC: 50-200 Positive control: Human liver cancer Predicted cell location: Cytoplasm
Reactivity:	Human, Mouse, Rat
Host:	Rabbit
Isotype:	IgG
Clonality:	Polyclonal
Immunogen:	Fusion protein of human PLCB2
Formulation:	pH7.4 PBS, 0.05% NaN ₃ , 40% Glycerol
Concentration:	lot specific
Purification:	Antigen affinity purification
Conjugation:	Unconjugated
Storage:	Store at -20°C.
Stability:	1 year
Gene Name:	phospholipase C beta 2
Database Link:	Entrez Gene 5330 Human Q00722
Background:	The protein encoded by this gene is a phosphodiesterase that catalyzes the hydrolysis of phosphatidylinositol 4,5-bisphosphate to the second messengers inositol 1,4,5-trisphosphate (IP ₃) and diacylglycerol. The encoded protein is activated by G proteins and has been shown to be involved in the type 2 taste receptor signal transduction pathway. In addition, nuclear factor kappa B can regulate the transcription of this gene, whose protein product is also an important regulator of platelet responses.
Synonyms:	FLJ38135; PLC-beta-2



[View online »](#)

Product images:

Immunohistochemistry of paraffin-embedded Human liver cancer tissue using TA370757 (PLCB2 Antibody) at dilution 1/60 (Original magnification: $\times 200$)



Immunohistochemistry of paraffin-embedded Human liver cancer tissue using TA370757 (PLCB2 Antibody) at dilution 1/60, treated with fusion protein. (Original magnification: $\times 200$)