

Product datasheet for **TA370736**

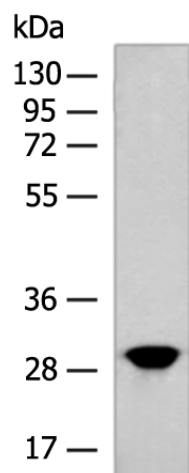
HYI Rabbit Polyclonal Antibody

Product data:

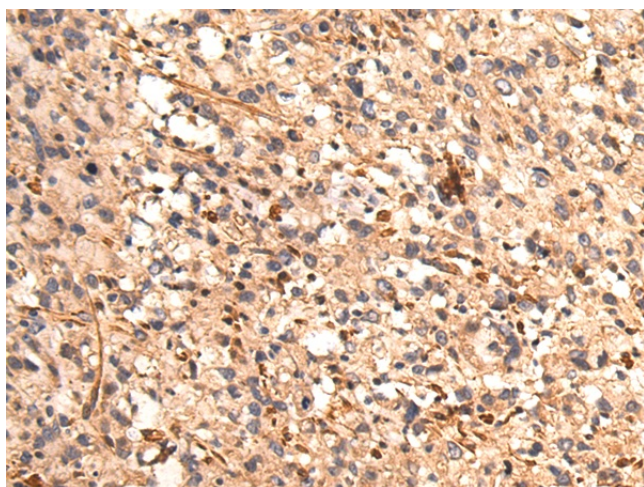
Product Type:	Primary Antibodies
Applications:	IHC, WB
Recommended Dilution:	WB: 500-2000 WB positive control: HL-60 cell lysate IHC: 50-200 Positive control: Human gastric cancer Predicted cell location: Cytoplasm
Reactivity:	Human, Mouse
Host:	Rabbit
Isotype:	IgG
Clonality:	Polyclonal
Immunogen:	Fusion protein of human HYI
Formulation:	pH7.4 PBS, 0.05% NaN ₃ , 40% Glycerol
Concentration:	lot specific
Purification:	Antigen affinity purification
Conjugation:	Unconjugated
Storage:	Store at -20°C.
Stability:	1 year
Predicted Protein Size:	30 kDa
Gene Name:	hydroxypyruvate isomerase (putative)
Database Link:	Entrez Gene 81888 Human Q5T013
Background:	This gene encodes a putative hydroxypyruvate isomerase, which likely catalyzes the conversion of hydroxypyruvate to 2-hydroxy-3-oxopropanoate, and may be involved in carbohydrate transport and metabolism. Alternatively spliced transcript variants encoding different isoforms have been found for this gene.
Synonyms:	HT036; MGC20767; OTTHUMP00000008689



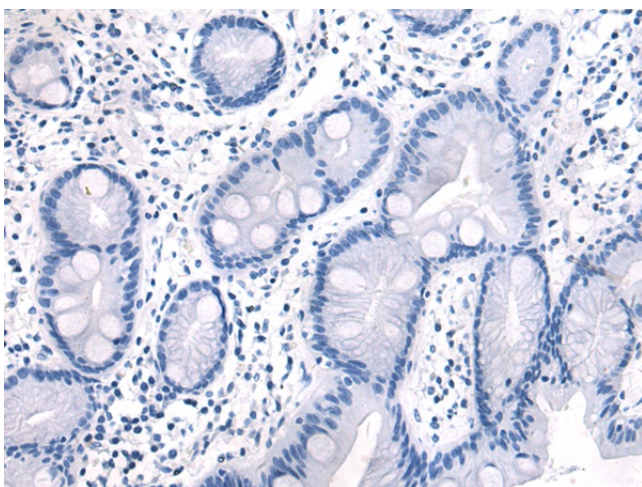
[View online »](#)

Product images:

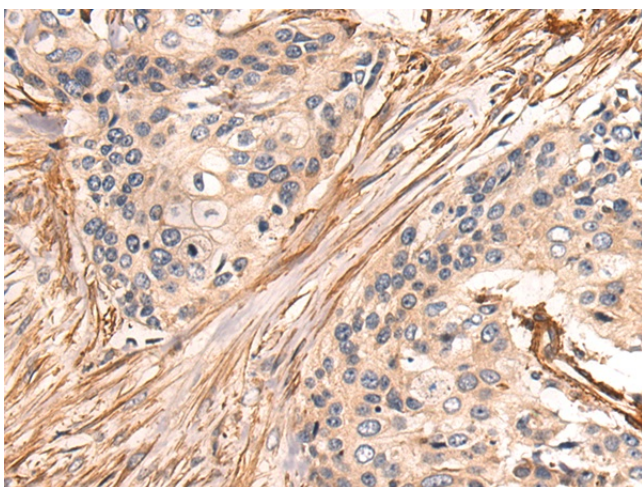
Gel: 8%SDS-PAGE
Lysate: 40 μ g
Lane: HL-60 cell lysate
Primary antibody: TA370736 (HYI Antibody) at dilution 1/700
Secondary antibody: Goat anti rabbit IgG at 1/5000 dilution
Exposure time: 30 seconds



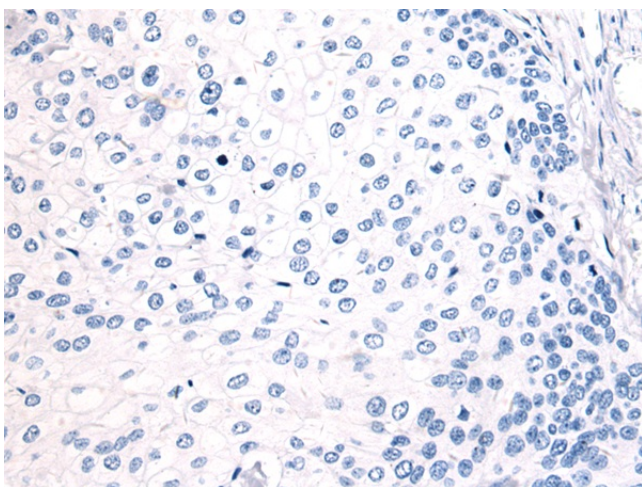
Immunohistochemistry of paraffin-embedded Human gastric cancer tissue using TA370736 (HYI Antibody) at dilution 1/65 (Original magnification: \times 200)



Immunohistochemistry of paraffin-embedded Human gastric cancer tissue using TA370736 (HYI Antibody) at dilution 1/65, treated with fusion protein. (Original magnification: x200)



Immunohistochemistry of paraffin-embedded Human cervical cancer tissue using TA370736 (HYI Antibody) at dilution 1/65 (Original magnification: x200)



Immunohistochemistry of paraffin-embedded Human cervical cancer tissue using TA370736 (HYI Antibody) at dilution 1/65, treated with fusion protein. (Original magnification: x200)