

Product datasheet for **TA370727**

Secretory lectin ZG16 (ZG16) Rabbit Polyclonal Antibody

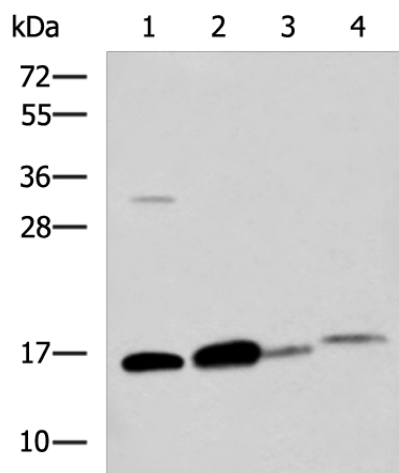
Product data:

Product Type:	Primary Antibodies
Applications:	WB
Recommended Dilution:	WB: 500-2000 WB positive control: Human sigmoid tissue, Mouse large intestine tissue, Mouse small intestines tissue, Mouse Pancreas tissue lysates
Reactivity:	Human, Mouse
Host:	Rabbit
Isotype:	IgG
Clonality:	Polyclonal
Immunogen:	Fusion protein of human ZG16
Formulation:	pH7.4 PBS, 0.05% NaN ₃ , 40% Glycerol
Concentration:	lot specific
Purification:	Antigen affinity purification
Conjugation:	Unconjugated
Storage:	Store at -20°C.
Stability:	1 year
Predicted Protein Size:	18 kDa
Gene Name:	zymogen granule protein 16
Database Link:	Entrez Gene 653808 Human O60844
Background:	May play a role in protein trafficking. May act as a linker molecule between the submembranous matrix on the luminal side of zymogen granule membrane (ZGM) and aggregated secretory proteins during granule formation in the TGN.
Synonyms:	FLJ43571; FLJ92276; hZG16; JCLN; JCLN1; MGC34820; MGC183567; ZG16A



[View online »](#)

Product images:



Gel: 12%SDS-PAGE
Lysate: 40 µg
Lane 1-4: Human sigmoid tissue
Mouse large intestine tissue
Mouse small intestines tissue
Mouse Pancreas tissue lysates
Primary antibody: TA370727 (ZG16 Antibody) at dilution 1/800
Secondary antibody: Goat anti rabbit IgG at 1/5000 dilution
Exposure time: 5 seconds