

Product datasheet for **TA370726**

STK32A Rabbit Polyclonal Antibody

Product data:

Product Type:	Primary Antibodies
Applications:	IHC, WB
Recommended Dilution:	WB: 500-2000 WB positive control: Mouse heart tissue lysate IHC: 100-200 Positive control: Human liver cancer Predicted cell location: Cytoplasm
Reactivity:	Human, Mouse
Host:	Rabbit
Isotype:	IgG
Clonality:	Polyclonal
Immunogen:	Fusion protein of human STK32A
Formulation:	pH7.4 PBS, 0.05% NaN ₃ , 40% Glycerol
Concentration:	lot specific
Purification:	Antigen affinity purification
Conjugation:	Unconjugated
Storage:	Store at -20°C.
Stability:	1 year
Predicted Protein Size:	46 kDa
Gene Name:	serine/threonine kinase 32A
Database Link:	Entrez Gene 202374 Human Q8WU08



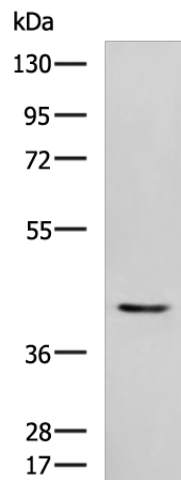
[View online »](#)

Background:

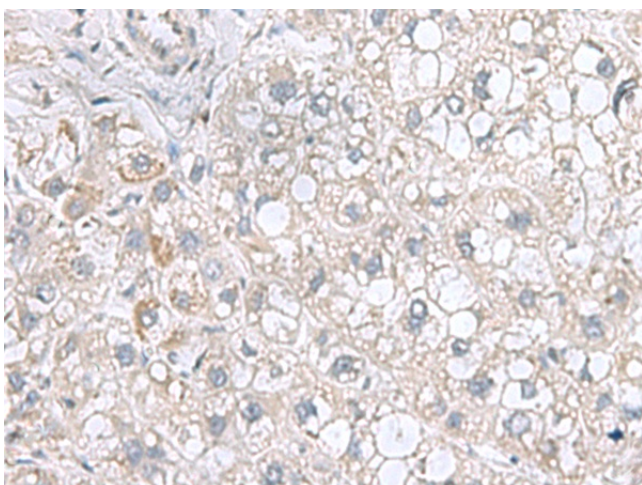
The phosphorylation of proteins by protein kinases and protein phosphatases is a key event in most nuclear and cytoplasmic processes. The ability to activate and deactivate proteins via phosphorylation or dephosphorylation is important for cell division, cell differentiation, DNA repair and transcription. STK32A (serine/threonine kinase 32A), also known as YANK1, is a 396 amino acid protein that belongs to the superfamily of serine/threonine protein kinases and exists as three isoforms. The gene encoding STK32A maps to human chromosome 5, which is associated with Cockayne syndrome through the ERCC8 gene and familial adenomatous polyposis through the adenomatous polyposis coli (APC) tumor suppressor gene. Treacher Collins syndrome is also chromosome 5 associated and is caused by insertions or deletions within the TCOF1 gene. Deletion of the p arm of chromosome 5 leads to Cri du chat syndrome. Deletion of 5q or chromosome 5 altogether is common in therapy-related acute myelogenous leukemias and myelodysplastic syndrome.

Synonyms:

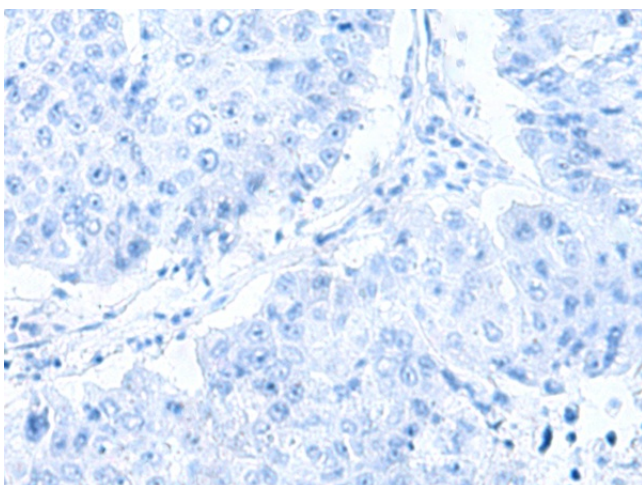
A930015B13Rik; MGC22688; YANK1

Product images:

Gel: 8%SDS-PAGE
Lysate: 40 µg
Lane: Mouse heart tissue lysate
Primary antibody: TA370726 (STK32A Antibody) at dilution 1/1000
Secondary antibody: Goat anti rabbit IgG at 1/5000 dilution
Exposure time: 10 seconds



Immunohistochemistry of paraffin-embedded Human liver cancer tissue using TA370726 (STK32A Antibody) at dilution 1/95 (Original magnification: $\times 200$)



Immunohistochemistry of paraffin-embedded Human liver cancer tissue using TA370726 (STK32A Antibody) at dilution 1/95, treated with fusion protein. (Original magnification: $\times 200$)