

## Product datasheet for **TA370723**

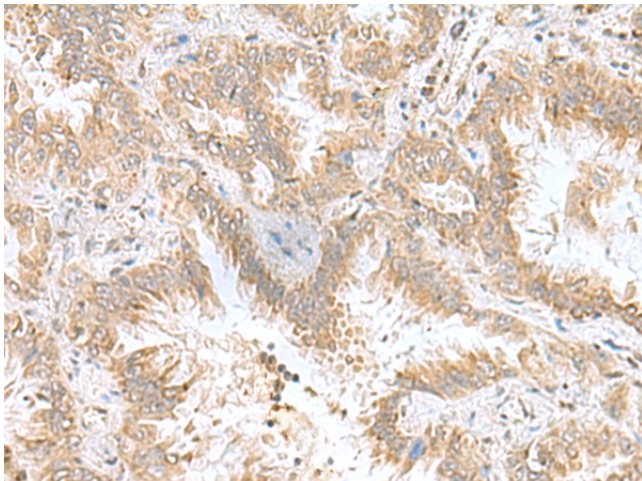
### CPLX3 Rabbit Polyclonal Antibody

#### Product data:

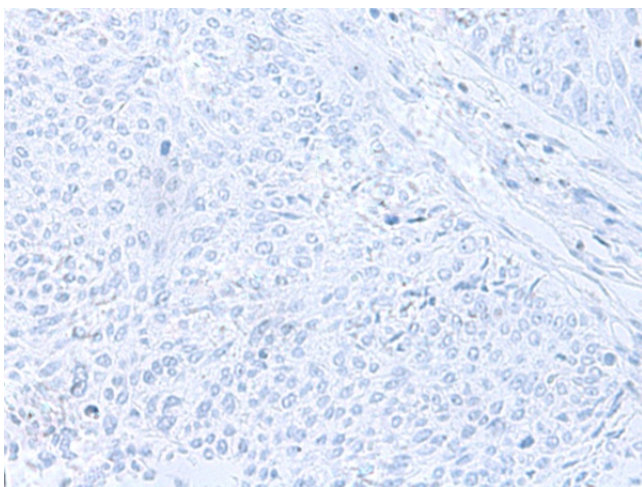
Product Type:	Primary Antibodies
Applications:	IHC
Recommended Dilution:	IHC: 50-200 Positive control: Human lung cancer Predicted cell location: Cytoplasm
Reactivity:	Human, Mouse
Host:	Rabbit
Isotype:	IgG
Clonality:	Polyclonal
Immunogen:	Fusion protein of human CPLX3
Formulation:	pH7.4 PBS, 0.05% NaN <sub>3</sub> , 40% Glycerol
Concentration:	lot specific
Purification:	Antigen affinity purification
Conjugation:	Unconjugated
Storage:	Store at -20°C.
Stability:	1 year
Gene Name:	complexin 3
Database Link:	<a href="#">Entrez Gene 594855 Human Q8WVH0</a>
Background:	Positively regulates a late step in synaptic vesicle exocytosis.
Synonyms:	CPX-III; CPXIII; FLJ13993; Nbla11589



[View online »](#)

**Product images:**

Immunohistochemistry of paraffin-embedded Human lung cancer tissue using TA370723 (CPLX3 Antibody) at dilution 1/55 (Original magnification:  $\times 200$ )



Immunohistochemistry of paraffin-embedded Human lung cancer tissue using TA370723 (CPLX3 Antibody) at dilution 1/55, treated with fusion protein. (Original magnification:  $\times 200$ )