

Product datasheet for **TA370722**

Ribonuclease A (RNASE1) Rabbit Polyclonal Antibody

Product data:

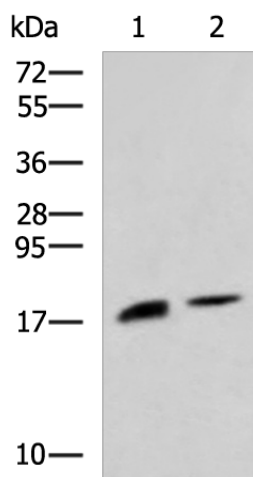
Product Type:	Primary Antibodies
Applications:	IHC, WB
Recommended Dilution:	WB: 500-2000 WB positive control: Rat pancreas tissue and Mouse pancreas tissue lysates IHC: 50-100 Positive control: Human cervical cancer Predicted cell location: Cytoplasm
Reactivity:	Human, Mouse, Rat
Host:	Rabbit
Isotype:	IgG
Clonality:	Polyclonal
Immunogen:	Fusion protein of human RNASE1
Formulation:	pH7.4 PBS, 0.05% NaN ₃ , 40% Glycerol
Concentration:	lot specific
Purification:	Antigen affinity purification
Conjugation:	Unconjugated
Storage:	Store at -20°C.
Stability:	1 year
Predicted Protein Size:	18 kDa
Gene Name:	ribonuclease A family member 1, pancreatic
Database Link:	Entrez Gene 6035 Human P07998
Background:	This gene encodes a member of the pancreatic-type of secretory ribonucleases, a subset of the ribonuclease A superfamily. The encoded endonuclease cleaves internal phosphodiester RNA bonds on the 3'-side of pyrimidine bases. It prefers poly(C) as a substrate and hydrolyzes 2',3'-cyclic nucleotides, with a pH optimum near 8.0. The encoded protein is monomeric and more commonly acts to degrade ds-RNA over ss-RNA. Alternative splicing occurs at this locus and four transcript variants encoding the same protein have been identified.



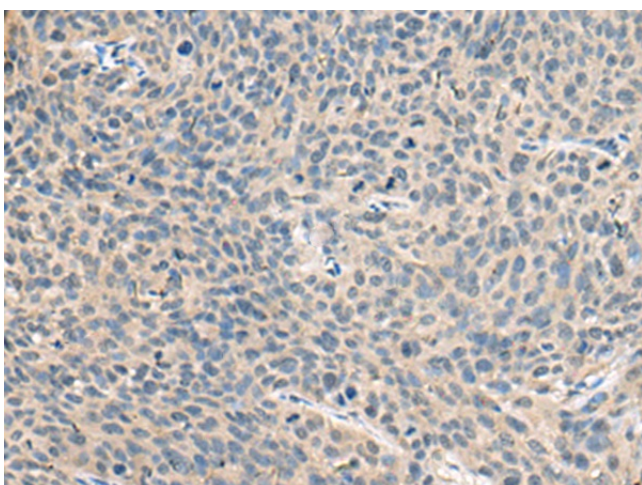
[View online »](#)

Synonyms: HP-RNase; MGC12408; RIB-1; RIB1; RNS1

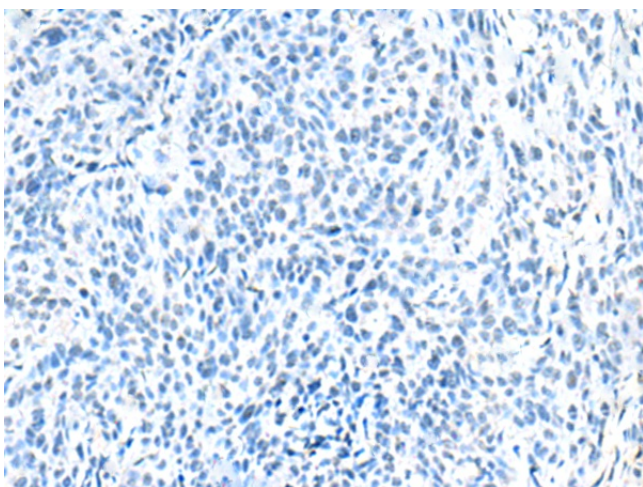
Product images:



Gel: 12%SDS-PAGE
Lysate: 40 μ g
Lane 1-2: Rat pancreas tissue and Mouse pancreas tissue lysates
Primary antibody: TA370722 (RNASE1 Antibody) at dilution 1/650
Secondary antibody: Goat anti rabbit IgG at 1/5000 dilution
Exposure time: 50 seconds



Immunohistochemistry of paraffin-embedded Human cervical cancer tissue using TA370722 (RNASE1 Antibody) at dilution 1/50 (Original magnification: $\times 200$)



Immunohistochemistry of paraffin-embedded Human cervical cancer tissue using TA370722 (RNASE1 Antibody) at dilution 1/50, treated with fusion protein. (Original magnification: ×200)