

Product datasheet for **TA370710S**

HRSP12 (RIDA) Rabbit Polyclonal Antibody

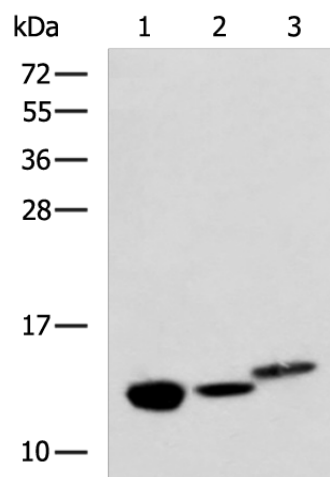
Product data:

| | |
|-------------------------|---|
| Product Type: | Primary Antibodies |
| Applications: | IHC, WB |
| Recommended Dilution: | WB: 500-2000 WB positive control: Rat kidney tissue, Mouse liver tissue and Human fetal liver tissue lysates IHC: 50-200 Positive control: Human lung cancer Predicted cell location: Cytoplasm |
| Reactivity: | Human, Mouse, Rat |
| Host: | Rabbit |
| Isotype: | IgG |
| Clonality: | Polyclonal |
| Immunogen: | Fusion protein of human RIDA |
| Formulation: | pH7.4 PBS, 0.05% NaN ₃ , 40% Glycerol |
| Purification: | Antigen affinity purification |
| Conjugation: | Unconjugated |
| Storage: | Store at -20°C. |
| Stability: | 1 year |
| Predicted Protein Size: | 14 kDa |
| Gene Name: | reactive intermediate imine deaminase A homolog |
| Database Link: | Entrez Gene 10247 Human P52758 |

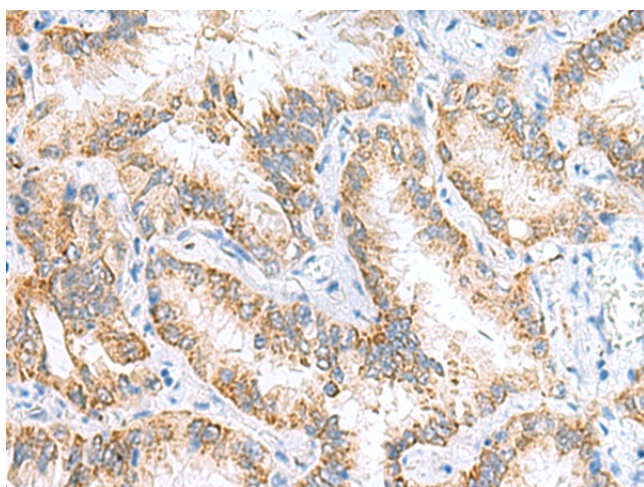
Background: Catalyzes the hydrolytic deamination of enamine/imine intermediates that form during the course of normal metabolism. May facilitate the release of ammonia from these potentially toxic reactive metabolites, reducing their impact on cellular components. It may act on enamine/imine intermediates formed by several types of pyridoxal-5'-phosphate-dependent dehydratases including L-threonine dehydratase. May also function as an endoribonuclease, cleaving mRNA phosphodiester bonds of single-stranded RNA (By similarity). Thereby, may inhibit protein translation (PubMed:8973653).



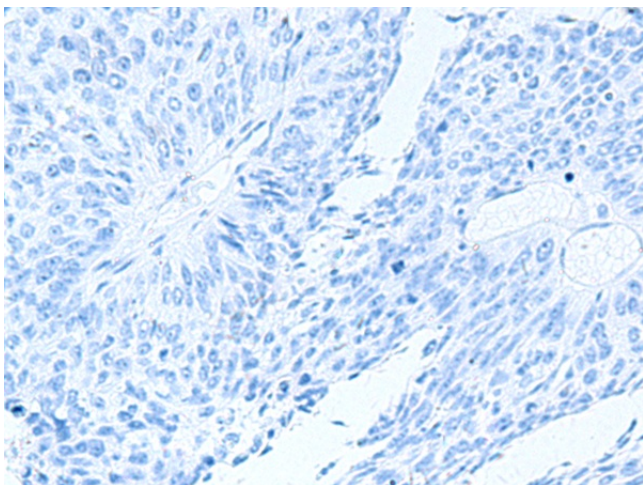
[View online »](#)

Product images:

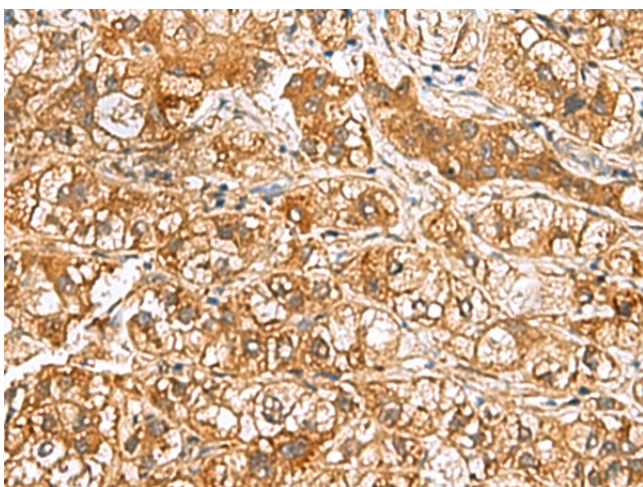
Gel: 12%SDS-PAGE
Lysate: 40 μ g
Lane 1-3: Rat kidney tissue
Mouse liver tissue and Human fetal liver tissue
lysates
Primary antibody: [TA370710] (RIDA Antibody) at
dilution 1/600
Secondary antibody: Goat anti rabbit IgG at
1/5000 dilution
Exposure time: 15 seconds



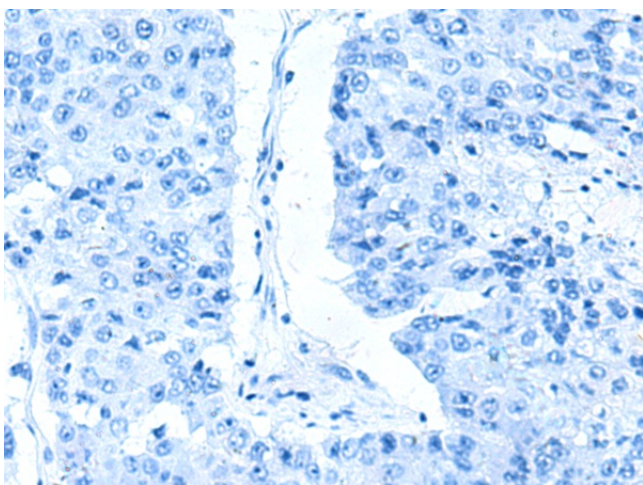
Immunohistochemistry of paraffin-embedded
Human lung cancer tissue using [TA370710]
(RIDA Antibody) at dilution 1/65 (Original
magnification: \times 200)



Immunohistochemistry of paraffin-embedded Human lung cancer tissue using [TA370710] (RIDA Antibody) at dilution 1/65, treated with fusion protein. (Original magnification: x200)



Immunohistochemistry of paraffin-embedded Human liver cancer tissue using [TA370710] (RIDA Antibody) at dilution 1/65 (Original magnification: x200)



Immunohistochemistry of paraffin-embedded Human liver cancer tissue using [TA370710] (RIDA Antibody) at dilution 1/65, treated with fusion protein. (Original magnification: x200)