

Product datasheet for **TA370710**

HRSP12 (RIDA) Rabbit Polyclonal Antibody

Product data:

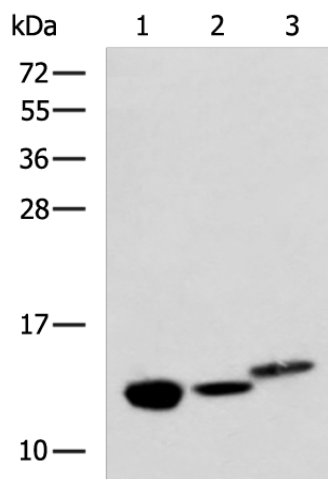
Product Type:	Primary Antibodies
Applications:	IHC, WB
Recommended Dilution:	WB: 500-2000 WB positive control: Rat kidney tissue, Mouse liver tissue and Human fetal liver tissue lysates IHC: 50-200 Positive control: Human lung cancer Predicted cell location: Cytoplasm
Reactivity:	Human, Mouse, Rat
Host:	Rabbit
Isotype:	IgG
Clonality:	Polyclonal
Immunogen:	Fusion protein of human RIDA
Formulation:	pH7.4 PBS, 0.05% NaN ₃ , 40% Glycerol
Concentration:	lot specific
Purification:	Antigen affinity purification
Conjugation:	Unconjugated
Storage:	Store at -20°C.
Stability:	1 year
Predicted Protein Size:	14 kDa
Gene Name:	reactive intermediate imine deaminase A homolog
Database Link:	Entrez Gene 10247 Human P52758



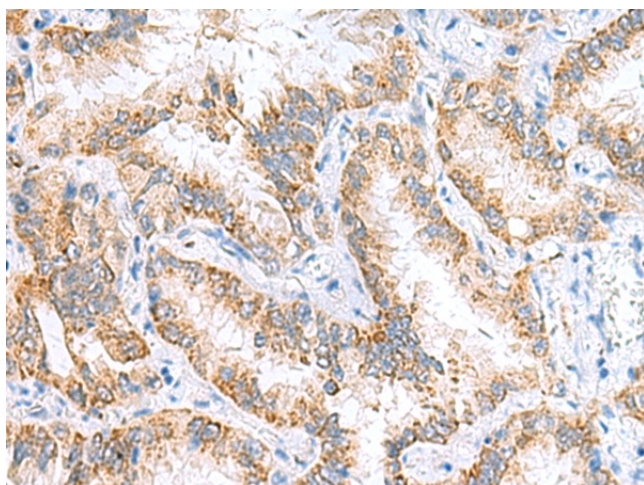
[View online »](#)

Background:

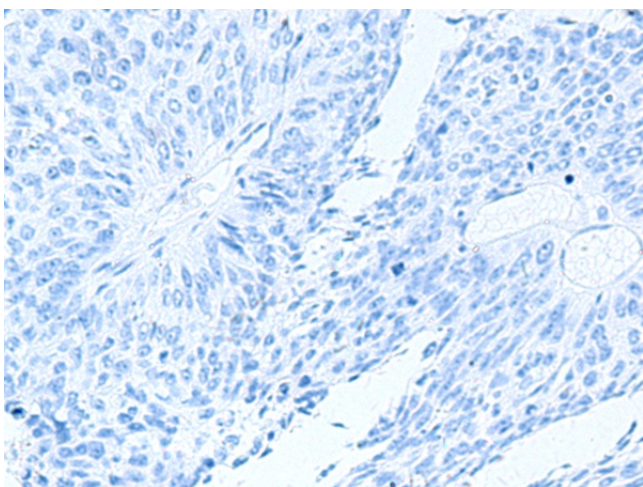
Catalyzes the hydrolytic deamination of enamine/imine intermediates that form during the course of normal metabolism. May facilitate the release of ammonia from these potentially toxic reactive metabolites, reducing their impact on cellular components. It may act on enamine/imine intermediates formed by several types of pyridoxal-5'-phosphate-dependent dehydratases including L-threonine dehydratase. May also function as an endoribonuclease, cleaving mRNA phosphodiester bonds of single-stranded RNA (By similarity). Thereby, may inhibit protein translation (PubMed:8973653).

Product images:


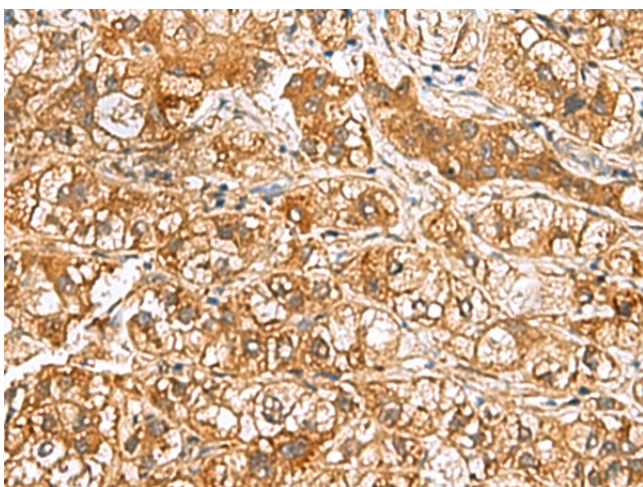
Gel: 12%SDS-PAGE
 Lysate: 40 µg
 Lane 1-3: Rat kidney tissue
 Mouse liver tissue and Human fetal liver tissue
 lysates
 Primary antibody: TA370710 (RIDA Antibody) at
 dilution 1/600
 Secondary antibody: Goat anti rabbit IgG at
 1/5000 dilution
 Exposure time: 15 seconds



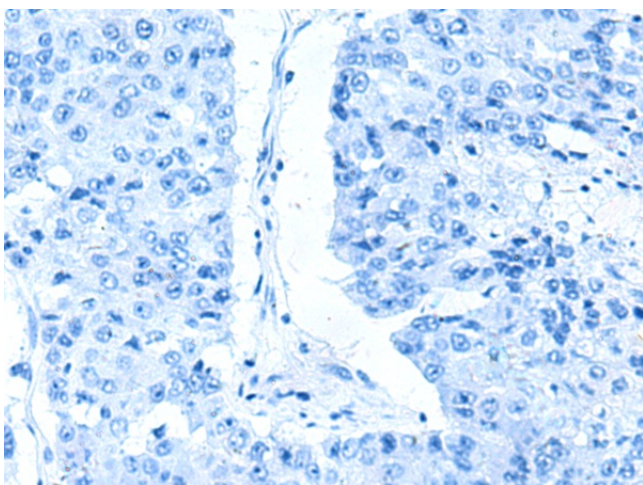
Immunohistochemistry of paraffin-embedded
 Human lung cancer tissue using TA370710 (RIDA
 Antibody) at dilution 1/65 (Original magnification:
 ×200)



Immunohistochemistry of paraffin-embedded Human lung cancer tissue using TA370710 (RIDA Antibody) at dilution 1/65, treated with fusion protein. (Original magnification: $\times 200$)



Immunohistochemistry of paraffin-embedded Human liver cancer tissue using TA370710 (RIDA Antibody) at dilution 1/65 (Original magnification: $\times 200$)



Immunohistochemistry of paraffin-embedded Human liver cancer tissue using TA370710 (RIDA Antibody) at dilution 1/65, treated with fusion protein. (Original magnification: $\times 200$)