

Product datasheet for **TA370700S**

PAM16 Rabbit Polyclonal Antibody

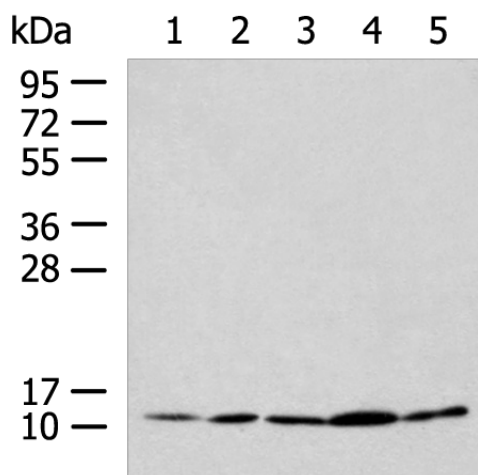
Product data:

Product Type:	Primary Antibodies
Applications:	IHC, WB
Recommended Dilution:	WB: 500-2000 WB positive control: HL-60, Hela, Jurkat, LNCAP, HepG2 cell lysates IHC: 50-200 Positive control: Human tonsil Predicted cell location: Cytoplasm
Reactivity:	Human, Mouse
Host:	Rabbit
Isotype:	IgG
Clonality:	Polyclonal
Immunogen:	Fusion protein of human PAM16
Formulation:	pH7.4 PBS, 0.05% NaN ₃ , 40% Glycerol
Purification:	Antigen affinity purification
Conjugation:	Unconjugated
Storage:	Store at -20°C.
Stability:	1 year
Predicted Protein Size:	14 kDa
Gene Name:	presequence translocase-associated motor 16 homolog (<i>S. cerevisiae</i>)
Database Link:	Entrez Gene 51025 Human Q9Y3D7
Background:	This gene encodes a mitochondrial protein involved in granulocyte-macrophage colony-stimulating factor (GM-CSF) signaling. This protein also plays a role in the import of nuclear-encoded mitochondrial proteins into the mitochondrial matrix and may be important in reactive oxygen species (ROS) homeostasis. Mutations in this gene cause Megarbane-Dagher-Melike type spondylometaphyseal dysplasia, an early lethal skeletal dysplasia characterized by short stature, developmental delay and other skeletal abnormalities.
Synonyms:	2010110I09Rik; AV006767; CGI-136; Magmas; Tim16; Timm16



[View online »](#)

Product images:



Gel: 12%SDS-PAGE

Lysate: 40 μ g

Lane 1-5: HL-60

Hela

Jurkat

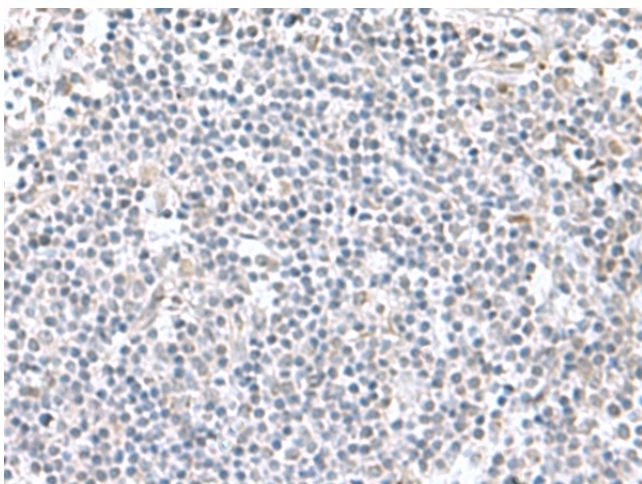
LNCAP

HepG2 cell lysates

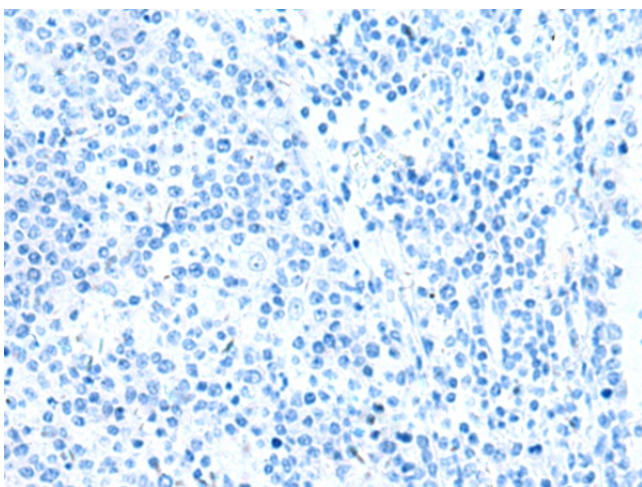
Primary antibody: [TA370700] (PAM16 Antibody) at dilution 1/900

Secondary antibody: Goat anti rabbit IgG at 1/5000 dilution

Exposure time: 1 minute



Immunohistochemistry of paraffin-embedded Human tonsil tissue using [TA370700] (PAM16 Antibody) at dilution 1/60 (Original magnification: \times 200)



Immunohistochemistry of paraffin-embedded Human tonsil tissue using [TA370700] (PAM16 Antibody) at dilution 1/60, treated with fusion protein. (Original magnification: x200)