

Product datasheet for **TA370700**

PAM16 Rabbit Polyclonal Antibody

Product data:

Product Type:	Primary Antibodies
Applications:	IHC, WB
Recommended Dilution:	WB: 500-2000 WB positive control: HL-60, HeLa, Jurkat, LNCAP, HepG2 cell lysates IHC: 50-200 Positive control: Human tonsil Predicted cell location: Cytoplasm
Reactivity:	Human, Mouse
Host:	Rabbit
Isotype:	IgG
Clonality:	Polyclonal
Immunogen:	Fusion protein of human PAM16
Formulation:	pH7.4 PBS, 0.05% NaN ₃ , 40% Glycerol
Concentration:	lot specific
Purification:	Antigen affinity purification
Conjugation:	Unconjugated
Storage:	Store at -20°C.
Stability:	1 year
Predicted Protein Size:	14 kDa
Gene Name:	presequence translocase-associated motor 16 homolog (<i>S. cerevisiae</i>)
Database Link:	Entrez Gene 51025 Human Q9Y3D7

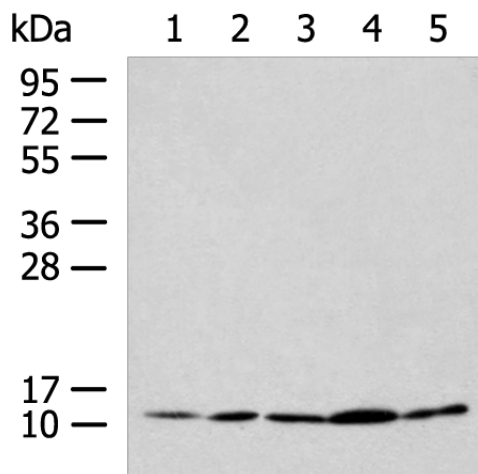
Background: This gene encodes a mitochondrial protein involved in granulocyte-macrophage colony-stimulating factor (GM-CSF) signaling. This protein also plays a role in the import of nuclear-encoded mitochondrial proteins into the mitochondrial matrix and may be important in reactive oxygen species (ROS) homeostasis. Mutations in this gene cause Megarbane-Dagher-Melike type spondylometaphyseal dysplasia, an early lethal skeletal dysplasia characterized by short stature, developmental delay and other skeletal abnormalities.



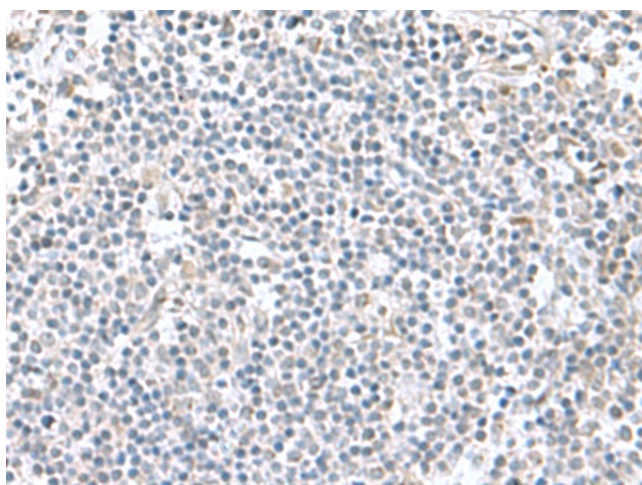
[View online »](#)

Synonyms: 2010110I09Rik; AV006767; CGI-136; Magmas; Tim16; Timm16

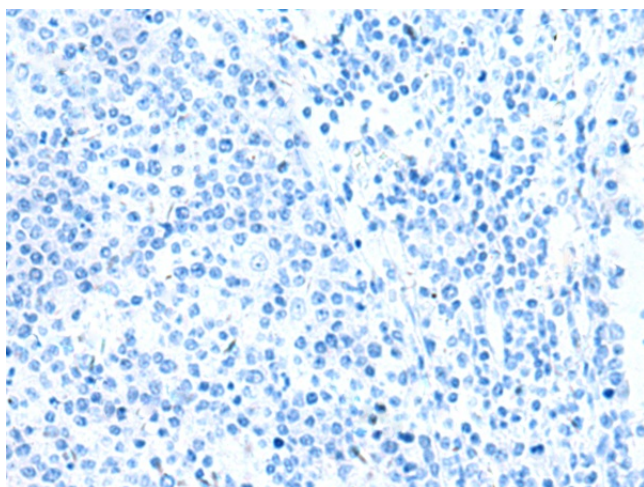
Product images:



Gel: 12%SDS-PAGE
 Lysate: 40 µg
 Lane 1-5: HL-60
 HeLa
 Jurkat
 LNCAP
 HepG2 cell lysates
 Primary antibody: TA370700 (PAM16 Antibody) at dilution 1/900
 Secondary antibody: Goat anti rabbit IgG at 1/5000 dilution
 Exposure time: 1 minute



Immunohistochemistry of paraffin-embedded Human tonsil tissue using TA370700 (PAM16 Antibody) at dilution 1/60 (Original magnification: ×200)



Immunohistochemistry of paraffin-embedded Human tonsil tissue using TA370700 (PAM16 Antibody) at dilution 1/60, treated with fusion protein. (Original magnification: x200)