

## Product datasheet for **TA370699**

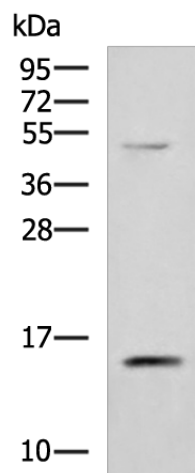
### PHPT1 Rabbit Polyclonal Antibody

#### Product data:

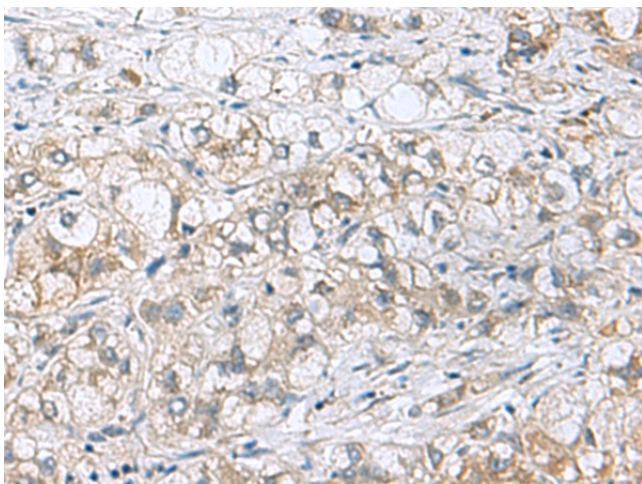
|                         |   |
|-------------------------|---|
| Product Type:           | Primary Antibodies  |
| Applications:           | IHC, WB   |
| Recommended Dilution:   | WB: 1000-5000<br>WB positive control: 293T cell lysate<br>IHC: 200-400<br>Positive control: Human liver cancer<br>Predicted cell location: Cytoplasm  |
| Reactivity:             | Human, Mouse  |
| Host:                   | Rabbit  |
| Isotype:                | IgG   |
| Clonality:              | Polyclonal  |
| Immunogen:              | Fusion protein of human PHPT1   |
| Formulation:            | pH7.4 PBS, 0.05% NaN <sub>3</sub> , 40% Glycerol  |
| Concentration:          | lot specific  |
| Purification:           | Antigen affinity purification   |
| Conjugation:            | Unconjugated  |
| Storage:                | Store at -20°C.   |
| Stability:              | 1 year  |
| Predicted Protein Size: | 14 kDa  |
| Gene Name:              | phosphohistidine phosphatase 1  |
| Database Link:          | <a href="#">Entrez Gene 29085 Human Q9NRX4</a>  |
| Background:             | This gene encodes an enzyme that catalyzes the reversible dephosphorylation of histidine residues in proteins. It may be involved in the dephosphorylation of G-beta and ATP citrate lyase and in negatively regulating CD4 T lymphocytes by dephosphorylation and inhibition of KCa3.1 channels. Alternative splicing results in multiple transcript variants. |
| Synonyms:               | 1700008C22Rik; bA216L13.10; CGI-202; DKFZp564M173; HSPC141; OTTHUMP00000022620; PHP14   |



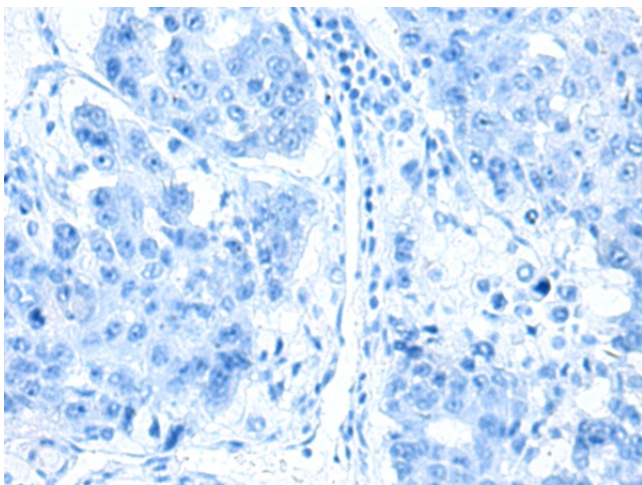
[View online »](#)

**Product images:**

Gel: 12%SDS-PAGE  
Lysate: 40  $\mu$ g  
Lane: 293T cell lysate  
Primary antibody: TA370699 (PHPT1 Antibody) at dilution 1/800  
Secondary antibody: Goat anti rabbit IgG at 1/5000 dilution  
Exposure time: 10 seconds



Immunohistochemistry of paraffin-embedded Human liver cancer tissue using TA370699 (PHPT1 Antibody) at dilution 1/210 (Original magnification:  $\times$ 200)



Immunohistochemistry of paraffin-embedded Human liver cancer tissue using TA370699 (PHPT1 Antibody) at dilution 1/210, treated with fusion protein. (Original magnification: ×200)