

Product datasheet for **TA370698**

RPL35 Rabbit Polyclonal Antibody

Product data:

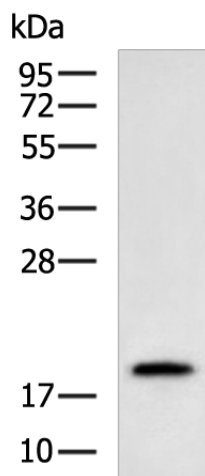
Product Type:	Primary Antibodies
Applications:	IHC, WB
Recommended Dilution:	WB: 500-2000 WB positive control: Jurkat cell lysate IHC: 50-200 Positive control: Human ovarian cancer Predicted cell location: Cytoplasm and Nucleus
Reactivity:	Human, Mouse, Rat
Host:	Rabbit
Isotype:	IgG
Clonality:	Polyclonal
Immunogen:	Fusion protein of human RPL35
Formulation:	pH7.4 PBS, 0.05% NaN ₃ , 40% Glycerol
Concentration:	lot specific
Purification:	Antigen affinity purification
Conjugation:	Unconjugated
Storage:	Store at -20°C.
Stability:	1 year
Predicted Protein Size:	15 kDa
Gene Name:	ribosomal protein L35
Database Link:	Entrez Gene 11224 Human P42766
Background:	Ribosomes, the organelles that catalyze protein synthesis, consist of a small 40S subunit and a large 60S subunit. Together these subunits are composed of 4 RNA species and approximately 80 structurally distinct proteins. This gene encodes a ribosomal protein that is a component of the 60S subunit. The protein belongs to the L29P family of ribosomal proteins. It is located in the cytoplasm. As is typical for genes encoding ribosomal proteins, there are multiple processed pseudogenes of this gene dispersed through the genome.



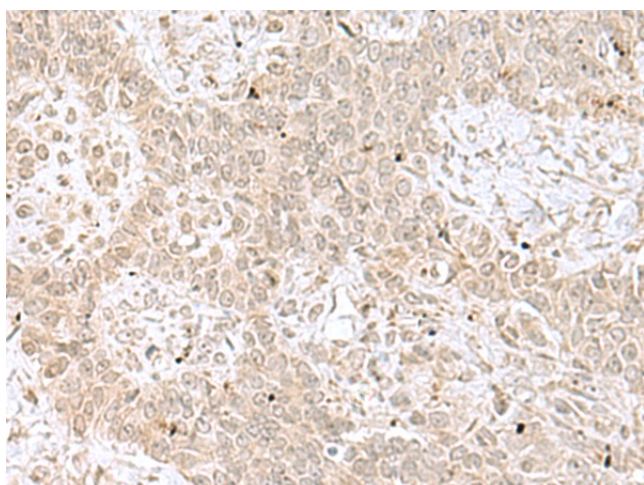
[View online »](#)

Synonyms: RPL35

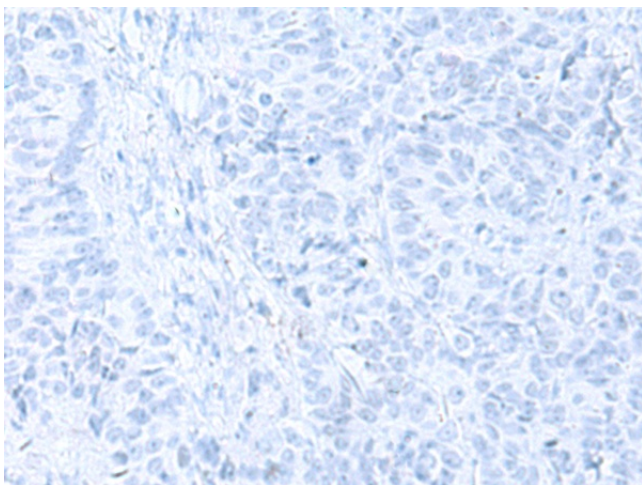
Product images:



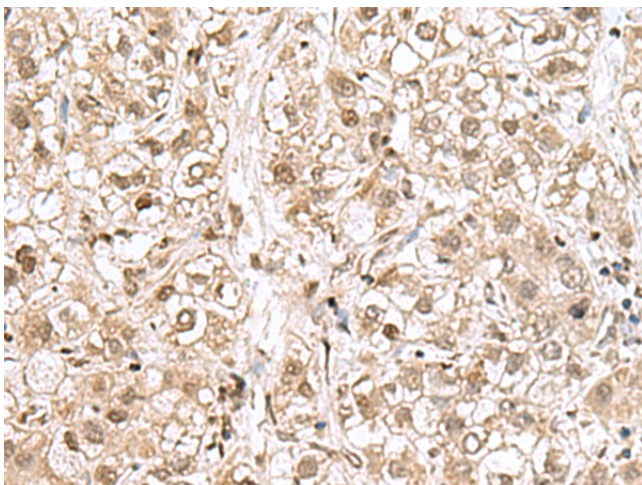
Gel: 12%SDS-PAGE
 Lysate: 40 µg
 Lane: Jurkat cell lysate
 Primary antibody: TA370698 (RPL35 Antibody) at dilution 1/800
 Secondary antibody: Goat anti rabbit IgG at 1/5000 dilution
 Exposure time: 90 seconds



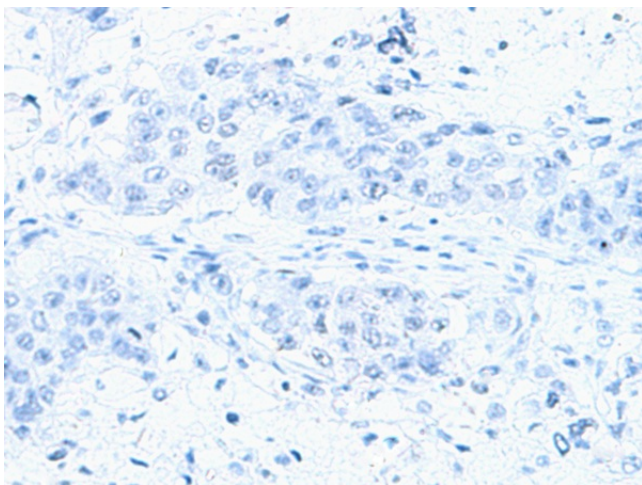
Immunohistochemistry of paraffin-embedded Human ovarian cancer tissue using TA370698 (RPL35 Antibody) at dilution 1/70 (Original magnification: ×200)



Immunohistochemistry of paraffin-embedded Human ovarian cancer tissue using TA370698 (RPL35 Antibody) at dilution 1/70, treated with fusion protein. (Original magnification: $\times 200$)



Immunohistochemistry of paraffin-embedded Human liver cancer tissue using TA370698 (RPL35 Antibody) at dilution 1/70 (Original magnification: $\times 200$)



Immunohistochemistry of paraffin-embedded Human liver cancer tissue using TA370698 (RPL35 Antibody) at dilution 1/70, treated with fusion protein. (Original magnification: $\times 200$)