

## Product datasheet for **TA370690**

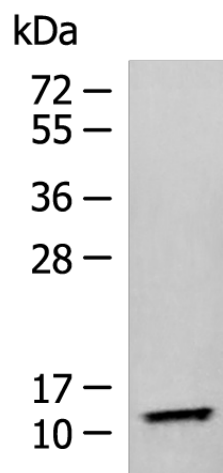
### **TMEM141 Rabbit Polyclonal Antibody**

#### **Product data:**

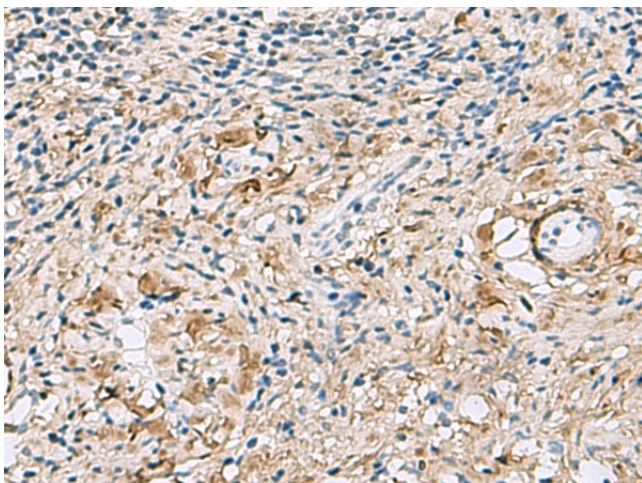
Product Type:	Primary Antibodies
Applications:	IHC, WB
Recommended Dilution:	WB: 500-2000 WB positive control: Human fetal liver tissue lysate IHC: 40-200 Positive control: Human cervical cancer Predicted cell location: Cytoplasm
Reactivity:	Human
Host:	Rabbit
Isotype:	IgG
Clonality:	Polyclonal
Immunogen:	Fusion protein of human TMEM141
Formulation:	pH7.4 PBS, 0.05% NaN <sub>3</sub> , 40% Glycerol
Concentration:	lot specific
Purification:	Antigen affinity purification
Conjugation:	Unconjugated
Storage:	Store at -20°C.
Stability:	1 year
Predicted Protein Size:	12 kDa
Gene Name:	transmembrane protein 141
Database Link:	<a href="#">Entrez Gene 85014 Human Q96I45</a>
Background:	The function of this protein remains unknown.
Synonyms:	MGC14141; RP11-216L13.7



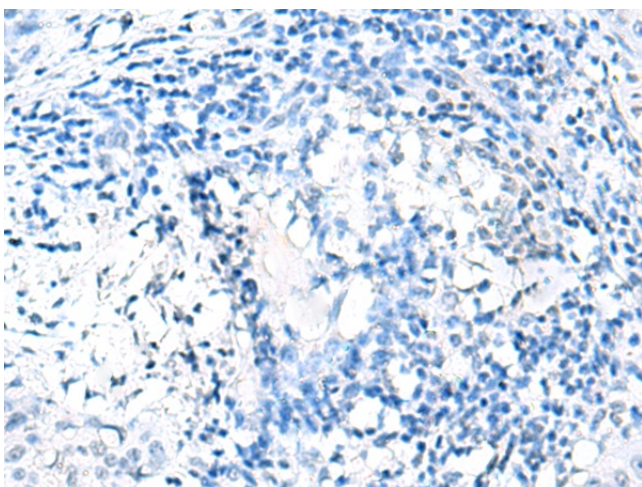
[View online »](#)

**Product images:**


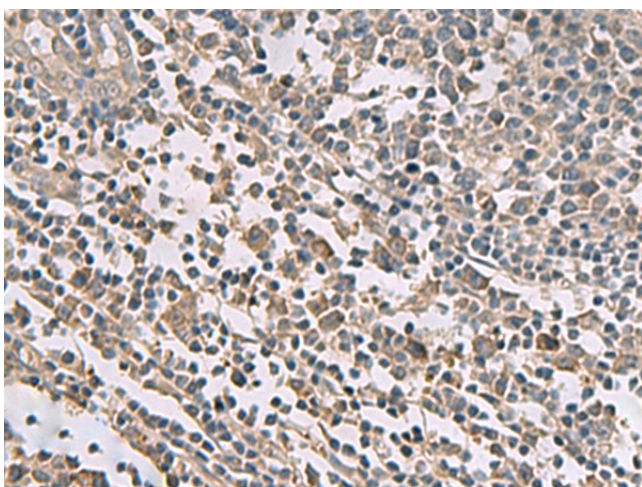
Gel: 12%SDS-PAGE  
 Lysate: 40 µg  
 Lane: Human fetal liver tissue lysate  
 Primary antibody: TA370690 (TMEM141 Antibody)  
 at dilution 1/900  
 Secondary antibody: Goat anti rabbit IgG at  
 1/5000 dilution  
 Exposure time: 2 minutes



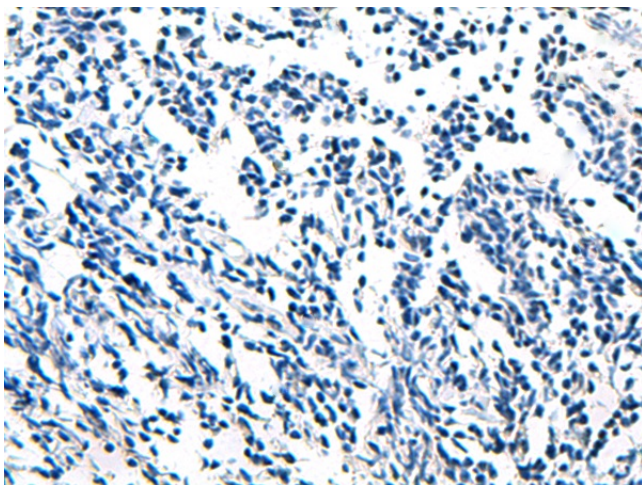
Immunohistochemistry of paraffin-embedded  
 Human cervical cancer tissue using TA370690  
 (TMEM141 Antibody) at dilution 1/60 (Original  
 magnification: ×200)



Immunohistochemistry of paraffin-embedded Human cervical cancer tissue using TA370690 (TMEM141 Antibody) at dilution 1/60, treated with fusion protein. (Original magnification: ×200)



Immunohistochemistry of paraffin-embedded Human tonsil tissue using TA370690 (TMEM141 Antibody) at dilution 1/60 (Original magnification: ×200)



Immunohistochemistry of paraffin-embedded Human tonsil tissue using TA370690 (TMEM141 Antibody) at dilution 1/60, treated with fusion protein. (Original magnification: ×200)