

## Product datasheet for **TA370684**

### Inositol Hexakisphosphate Kinase 2 (IP6K2) Rabbit Polyclonal Antibody

#### Product data:

Product Type:	Primary Antibodies
Applications:	IHC, WB
Recommended Dilution:	WB: 500-2000 WB positive control: K562 cell lysate IHC: 200-400 Positive control: Human liver cancer Predicted cell location: Cytoplasm
Reactivity:	Human
Host:	Rabbit
Isotype:	IgG
Clonality:	Polyclonal
Immunogen:	Fusion protein of human IP6K2
Formulation:	pH7.4 PBS, 0.05% NaN <sub>3</sub> , 40% Glycerol
Concentration:	lot specific
Purification:	Antigen affinity purification
Conjugation:	Unconjugated
Storage:	Store at -20°C.
Stability:	1 year
Predicted Protein Size:	49 kDa
Gene Name:	inositol hexakisphosphate kinase 2
Database Link:	<a href="#">Entrez Gene 51447 Human Q9UHH9</a>

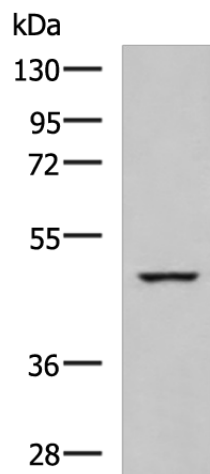
**Background:** This gene encodes a protein that belongs to the inositol phosphokinase (IPK) family. This protein is likely responsible for the conversion of inositol hexakisphosphate (InsP6) to diphosphoinositol pentakisphosphate (InsP7/PP-InsP5). It may also convert 1,3,4,5,6-pentakisphosphate (InsP5) to PP-InsP4 and affect the growth suppressive and apoptotic activities of interferon-beta in some ovarian cancers. Alternative splicing results in multiple transcript variants encoding different isoforms.



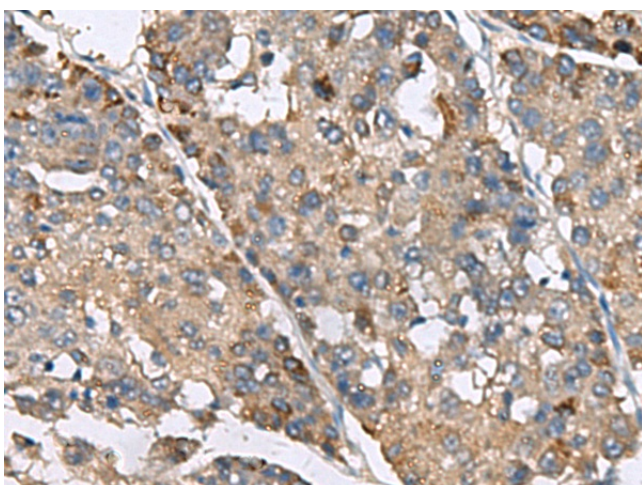
[View online »](#)

Synonyms: IHPK2; OTTHUMP00000210229; PiUS

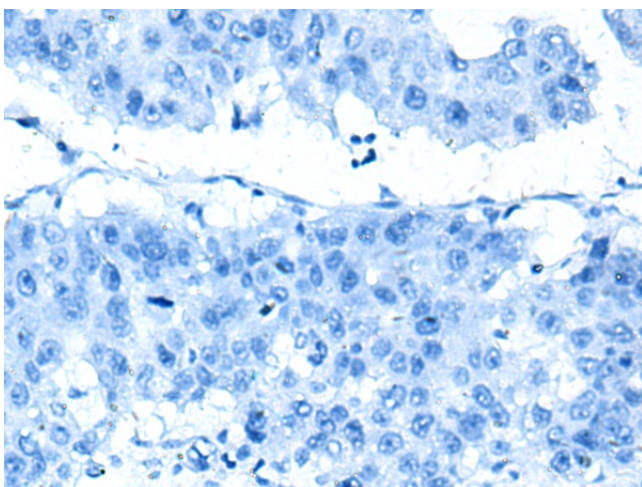
### Product images:



Gel: 8%SDS-PAGE  
Lysate: 40  $\mu$ g  
Lane: K562 cell lysate  
Primary antibody: TA370684 (IP6K2 Antibody) at dilution 1/650  
Secondary antibody: Goat anti rabbit IgG at 1/5000 dilution  
Exposure time: 5 seconds



Immunohistochemistry of paraffin-embedded Human liver cancer tissue using TA370684 (IP6K2 Antibody) at dilution 1/220 (Original magnification: x200)



Immunohistochemistry of paraffin-embedded Human liver cancer tissue using TA370684 (IP6K2 Antibody) at dilution 1/220, treated with fusion protein. (Original magnification: ×200)