

Product datasheet for **TA370673**

PPEF1 Rabbit Polyclonal Antibody

Product data:

Product Type:	Primary Antibodies
Applications:	IHC, WB
Recommended Dilution:	WB: 1000-5000 WB positive control: Human fetal brain tissue lysate IHC: 80-400 Positive control: Human cervical cancer Predicted cell location: Cytoplasm
Reactivity:	Human
Host:	Rabbit
Isotype:	IgG
Clonality:	Polyclonal
Immunogen:	Fusion protein of human PPEF1
Formulation:	pH7.4 PBS, 0.05% NaN ₃ , 40% Glycerol
Concentration:	lot specific
Purification:	Antigen affinity purification
Conjugation:	Unconjugated
Storage:	Store at -20°C.
Stability:	1 year
Predicted Protein Size:	76 kDa
Gene Name:	protein phosphatase with EF-hand domain 1
Database Link:	Entrez Gene 5475 Human O14829



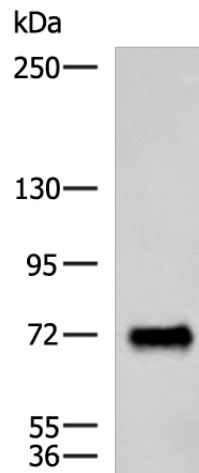
[View online »](#)

Background:

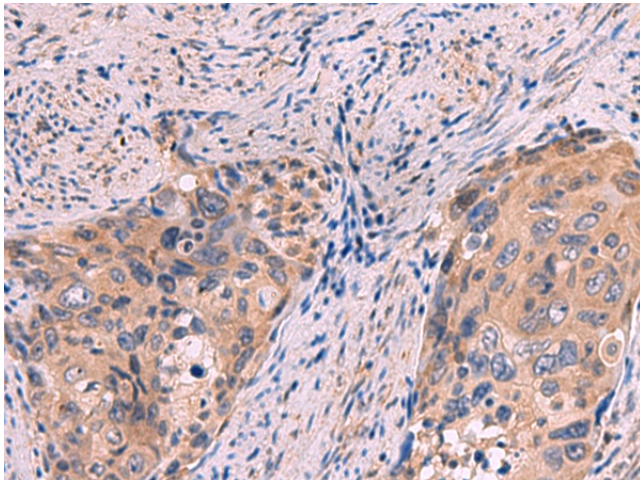
This gene encodes a member of the serine/threonine protein phosphatase with EF-hand motif family. The protein contains a protein phosphatase catalytic domain, and at least two EF-hand calcium-binding motifs in its C terminus. Although its substrate(s) is unknown, the encoded protein has been suggested to play a role in specific sensory neuron function and/or development. This gene shares high sequence similarity with the *Drosophila* retinal degeneration C (*rdgC*) gene. Several alternatively spliced transcript variants, each encoding a distinct isoform, have been described.

Synonyms:

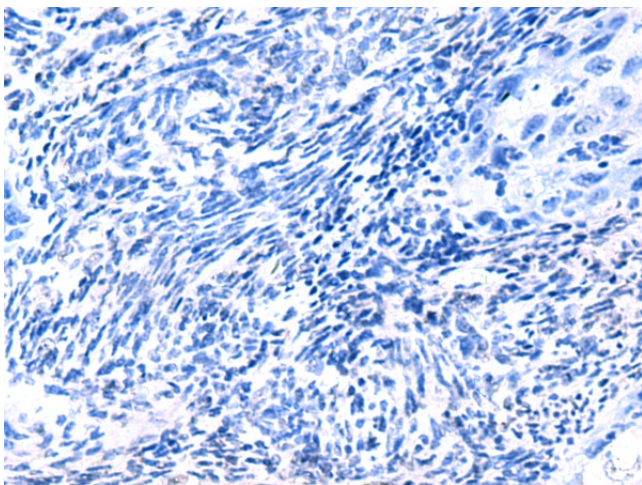
OTTHUMP00000023006; PP7; PPEF; PPEF-1; PPP7C

Product images:

Gel: 6%SDS-PAGE
Lysate: 40 μ g
Lane: Human fetal brain tissue lysate
Primary antibody: TA370673 (PPEF1 Antibody) at dilution 1/1500
Secondary antibody: Goat anti rabbit IgG at 1/5000 dilution
Exposure time: 1 minute



Immunohistochemistry of paraffin-embedded Human cervical cancer tissue using TA370673 (PPEF1 Antibody) at dilution 1/100 (Original magnification: \times 200)



Immunohistochemistry of paraffin-embedded Human cervical cancer tissue using TA370673 (PPEF1 Antibody) at dilution 1/100, treated with fusion protein. (Original magnification: ×200)