

## Product datasheet for **TA370668**

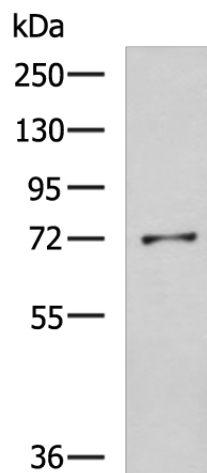
### GSTCD Rabbit Polyclonal Antibody

#### Product data:

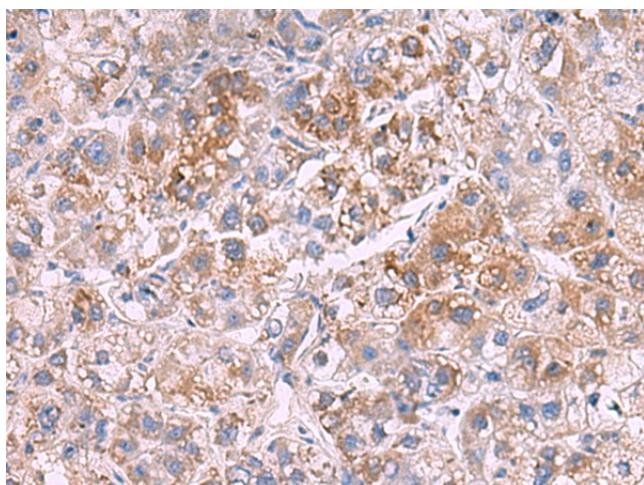
Product Type:	Primary Antibodies
Applications:	IHC, WB
Recommended Dilution:	WB: 500-2000 WB positive control: K562 cell lysate IHC: 70-350 Positive control: Human liver cancer Predicted cell location: Cytoplasm
Reactivity:	Human
Host:	Rabbit
Isotype:	IgG
Clonality:	Polyclonal
Immunogen:	Fusion protein of human GSTCD
Formulation:	pH7.4 PBS, 0.05% NaN <sub>3</sub> , 40% Glycerol
Concentration:	lot specific
Purification:	Antigen affinity purification
Conjugation:	Unconjugated
Storage:	Store at -20°C.
Stability:	1 year
Predicted Protein Size:	71 kDa
Gene Name:	glutathione S-transferase C-terminal domain containing
Database Link:	<a href="#">Entrez Gene 79807 Human Q8NEC7</a>
Background:	The function of this protein remains unknown.
Synonyms:	DKFZp686110174; FLJ13273



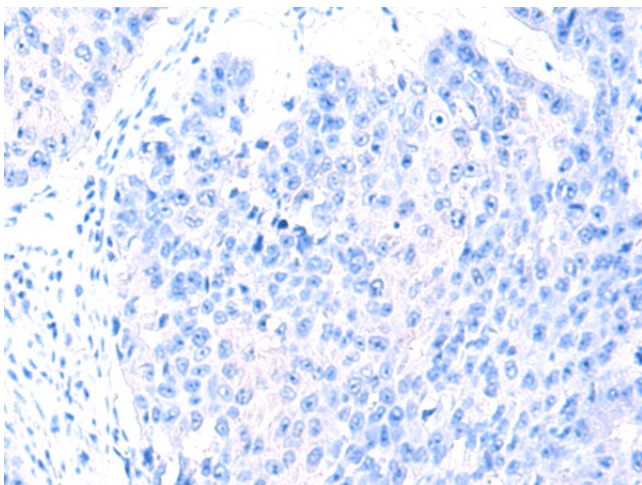
[View online »](#)

**Product images:**

Gel: 8%SDS-PAGE  
Lysate: 40  $\mu$ g  
Lane: K562 cell lysate  
Primary antibody: TA370668 (GSTCD Antibody) at dilution 1/800  
Secondary antibody: Goat anti rabbit IgG at 1/5000 dilution  
Exposure time: 5 minutes



Immunohistochemistry of paraffin-embedded Human liver cancer tissue using TA370668 (GSTCD Antibody) at dilution 1/70 (Original magnification:  $\times$ 200)



Immunohistochemistry of paraffin-embedded Human liver cancer tissue using TA370668 (GSTCD Antibody) at dilution 1/70, treated with fusion protein. (Original magnification: ×200)