

## Product datasheet for **TA370663**

### MTGR1 (CBFA2T2) Rabbit Polyclonal Antibody

#### Product data:

Product Type:	Primary Antibodies
Applications:	WB
Recommended Dilution:	WB: 1000-5000 WB positive control: 293T, Raji, Jurkat, HepG2 cell lysates
Reactivity:	Human, Mouse
Host:	Rabbit
Isotype:	IgG
Clonality:	Polyclonal
Immunogen:	Fusion protein of human CBFA2T2
Formulation:	pH7.4 PBS, 0.05% NaN <sub>3</sub> , 40% Glycerol
Concentration:	lot specific
Purification:	Antigen affinity purification
Conjugation:	Unconjugated
Storage:	Store at -20°C.
Stability:	1 year
Predicted Protein Size:	67 kDa
Gene Name:	CBFA2/RUNX1 translocation partner 2
Database Link:	<a href="#">Entrez Gene 9139 Human O43439</a>

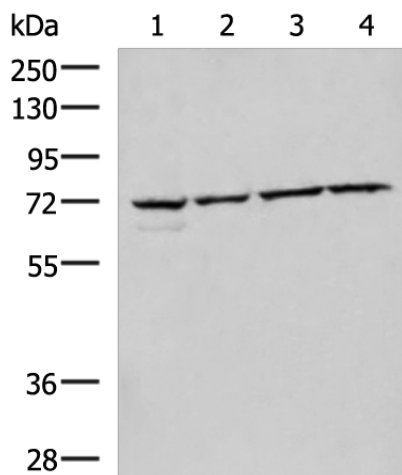
**Background:** In acute myeloid leukemia, especially in the M2 subtype, the t(8;21)(q22;q22) translocation is one of the most frequent karyotypic abnormalities. The translocation produces a chimeric gene made up of the 5'-region of the RUNX1 (AML1) gene fused to the 3'-region of the CBFA2T1 (MTG8) gene. The chimeric protein is thought to associate with the nuclear corepressor/histone deacetylase complex to block hematopoietic differentiation. The protein encoded by this gene binds to the AML1-MTG8 complex and may be important in promoting leukemogenesis. Several transcript variants are thought to exist for this gene, but the full-length nature of only three have been described.

**Synonyms:** DKFZp313F2116; EHT; MTGR1; OTTHUMP00000030653; p85; ZMYND3



[View online »](#)

## Product images:



Gel: 8%SDS-PAGE

Lysate: 40  $\mu$ g

Lane: 293T

Raji

Jurkat

HepG2 cell lysates

Primary antibody: TA370663 (CBFA2T2 Antibody)  
at dilution 1/1000

Secondary antibody: Goat anti rabbit IgG at  
1/5000 dilution

Exposure time: 40 seconds