

Product datasheet for **TA370661**

PPP2R1A Rabbit Polyclonal Antibody

Product data:

Product Type:	Primary Antibodies
Applications:	IHC, WB
Recommended Dilution:	WB: 1000-5000 WB positive control: NIH/3T3 cell lysate IHC: 70-350 Positive control: Human liver cancer Predicted cell location: Cytoplasm
Reactivity:	Human, Mouse
Host:	Rabbit
Isotype:	IgG
Clonality:	Polyclonal
Immunogen:	Fusion protein of human PPP2R1A
Formulation:	pH7.4 PBS, 0.05% NaN ₃ , 40% Glycerol
Concentration:	lot specific
Purification:	Antigen affinity purification
Conjugation:	Unconjugated
Storage:	Store at -20°C.
Stability:	1 year
Predicted Protein Size:	65 kDa
Gene Name:	protein phosphatase 2 scaffold subunit Aalpha
Database Link:	Entrez Gene 5518 Human P30153



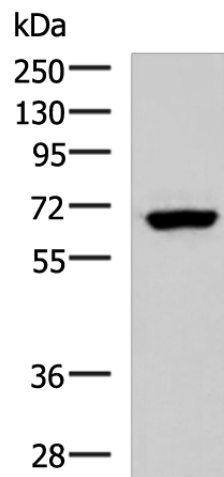
[View online »](#)

Background:

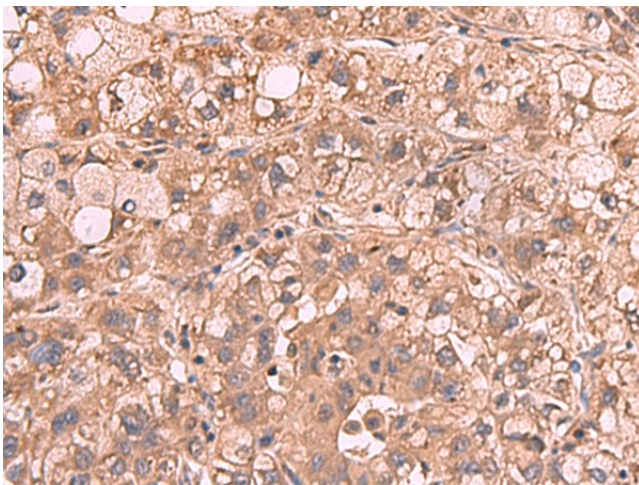
This gene encodes a constant regulatory subunit of protein phosphatase 2. Protein phosphatase 2 is one of the four major Ser/Thr phosphatases, and it is implicated in the negative control of cell growth and division. It consists of a common heteromeric core enzyme, which is composed of a catalytic subunit and a constant regulatory subunit, that associates with a variety of regulatory subunits. The constant regulatory subunit A serves as a scaffolding molecule to coordinate the assembly of the catalytic subunit and a variable regulatory B subunit. This gene encodes an alpha isoform of the constant regulatory subunit A. Alternatively spliced transcript variants have been described.

Synonyms:

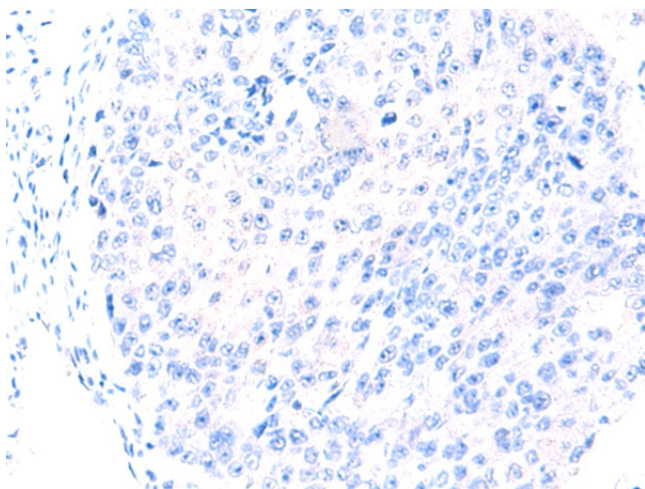
MGC786; PR65A

Product images:

Gel: 8%SDS-PAGE
Lysate: 40 µg
Lane: NIH/3T3 cell lysate
Primary antibody: TA370661 (PPP2R1A Antibody) at dilution 1/850
Secondary antibody: Goat anti rabbit IgG at 1/5000 dilution
Exposure time: 3 seconds



Immunohistochemistry of paraffin-embedded Human liver cancer tissue using TA370661 (PPP2R1A Antibody) at dilution 1/65 (Original magnification: ×200)



Immunohistochemistry of paraffin-embedded Human liver cancer tissue using TA370661 (PPP2R1A Antibody) at dilution 1/65, treated with fusion protein. (Original magnification: ×200)