

## Product datasheet for **TA370656S**

### Seryl tRNA synthetase (SARS) Rabbit Polyclonal Antibody

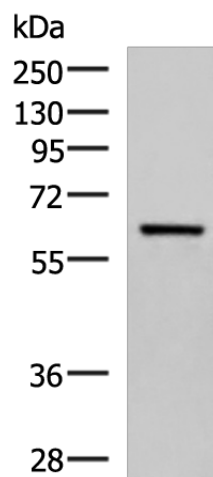
#### Product data:

Product Type:	Primary Antibodies
Applications:	IHC, WB
Recommended Dilution:	WB: 1000-5000 WB positive control: Human fetal brain tissue lysate IHC: 50-300 Positive control: Human liver cancer Predicted cell location: Cytoplasm
Reactivity:	Human, Mouse, Rat
Host:	Rabbit
Isotype:	IgG
Clonality:	Polyclonal
Immunogen:	Fusion protein of human SARS1
Formulation:	pH7.4 PBS, 0.05% NaN <sub>3</sub> , 40% Glycerol
Purification:	Antigen affinity purification
Conjugation:	Unconjugated
Storage:	Store at -20°C.
Stability:	1 year
Predicted Protein Size:	59 kDa
Gene Name:	seryl-tRNA synthetase
Database Link:	<a href="#">Entrez Gene 6301 Human P49591</a>
Background:	This gene belongs to the class II amino-acyl tRNA family. The encoded enzyme catalyzes the transfer of L-serine to tRNA (Ser) and is related to bacterial and yeast counterparts. Multiple alternatively spliced transcript variants have been described but the biological validity of all variants is unknown. [provided by RefSeq, Jul 2010]
Synonyms:	FLJ36399; SERRS; SERS

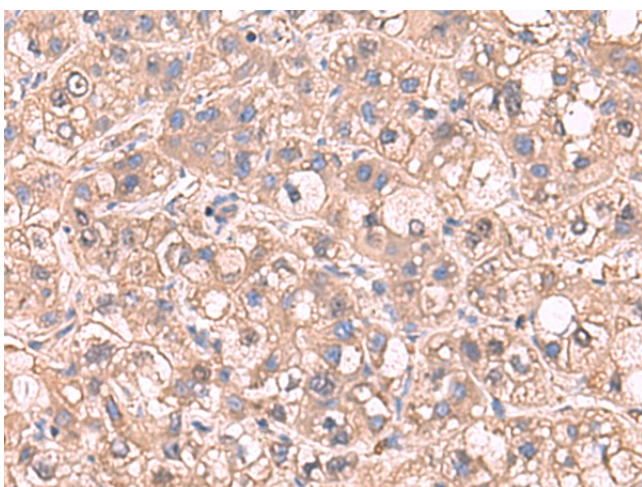


[View online »](#)

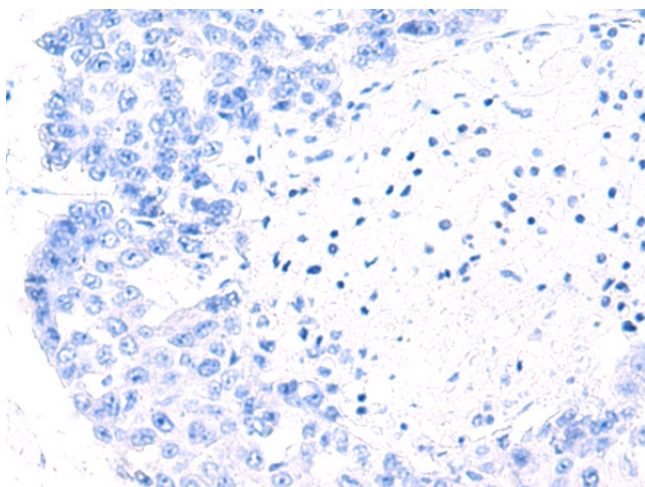
## Product images:



Gel: 8%SDS-PAGE  
Lysate: 40  $\mu$ g  
Lane: Human fetal brain tissue lysate  
Primary antibody: [TA370656] (SARS1 Antibody) at dilution 1/850  
Secondary antibody: Goat anti rabbit IgG at 1/5000 dilution  
Exposure time: 40 seconds



Immunohistochemistry of paraffin-embedded Human liver cancer tissue using [TA370656] (SARS1 Antibody) at dilution 1/65 (Original magnification:  $\times$ 200)



Immunohistochemistry of paraffin-embedded Human liver cancer tissue using [TA370656] (SARS1 Antibody) at dilution 1/65, treated with fusion protein. (Original magnification:  $\times 200$ )