

Product datasheet for **TA370651**

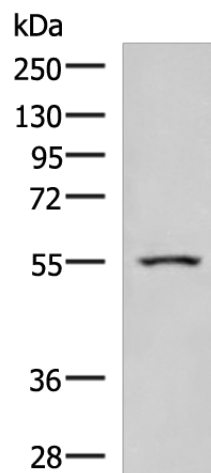
ARIH2 Rabbit Polyclonal Antibody

Product data:

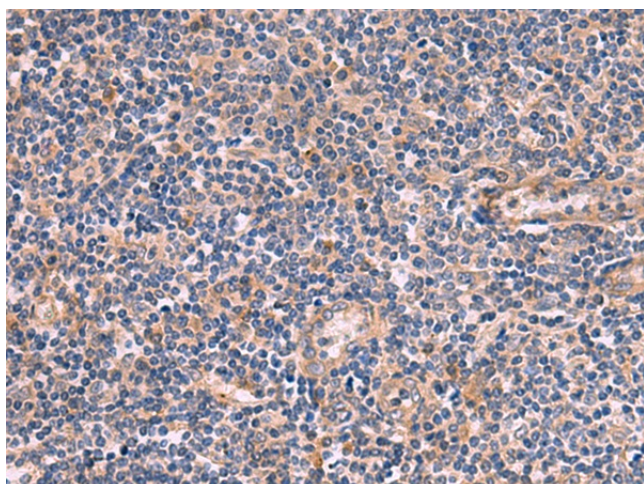
Product Type:	Primary Antibodies
Applications:	IHC, WB
Recommended Dilution:	WB: 1000-5000 WB positive control: Human heart tissue lysate IHC: 50-300 Positive control: Human tonsil Predicted cell location: Cytoplasm or Nucleus
Reactivity:	Human, Mouse
Host:	Rabbit
Isotype:	IgG
Clonality:	Polyclonal
Immunogen:	Fusion protein of human ARIH2
Formulation:	pH7.4 PBS, 0.05% NaN ₃ , 40% Glycerol
Concentration:	lot specific
Purification:	Antigen affinity purification
Conjugation:	Unconjugated
Storage:	Store at -20°C.
Stability:	1 year
Predicted Protein Size:	58 kDa
Gene Name:	ariadne RBR E3 ubiquitin protein ligase 2
Database Link:	Entrez Gene 10425 Human O95376
Background:	The protein encoded by this gene is an E3 ubiquitin-protein ligase that polyubiquitinates some proteins, tagging them for degradation. The encoded protein upregulates p53 in some cancer cells and may inhibit myelopoiesis. Several transcript variants encoding different isoforms have been found for this gene, although the full-length nature of some of them have not been determined yet.
Synonyms:	ARI-2; ARI2; FLJ10938; FLJ33921; OTTHUMP00000210388; TRIAD1



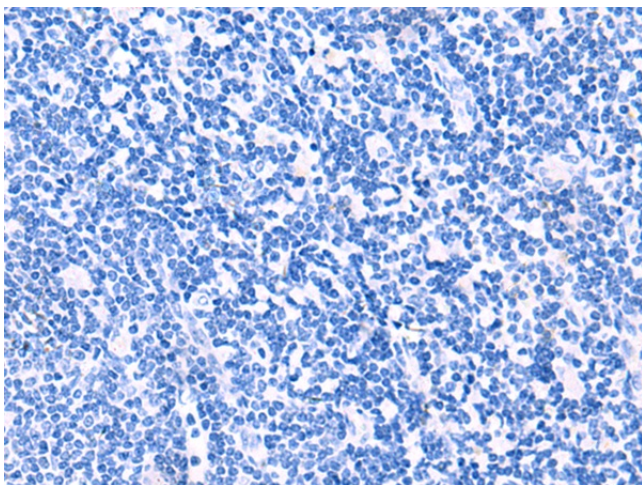
[View online »](#)

Product images:

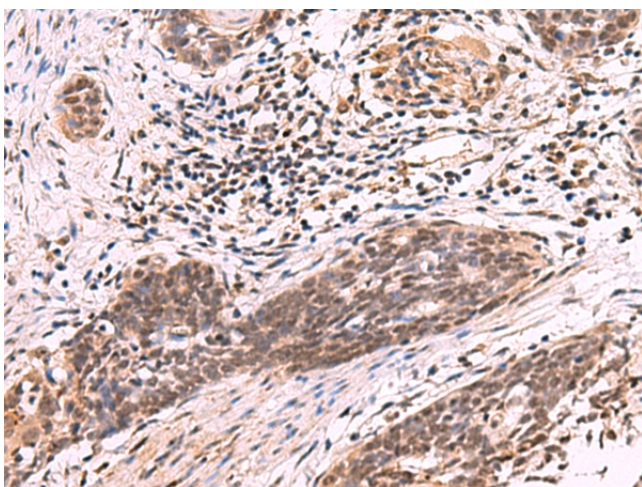
Gel: 8%SDS-PAGE
Lysate: 40 μ g
Lane: Human heart tissue lysate
Primary antibody: TA370651 (ARIH2 Antibody) at dilution 1/1000
Secondary antibody: Goat anti rabbit IgG at 1/5000 dilution
Exposure time: 3 minutes



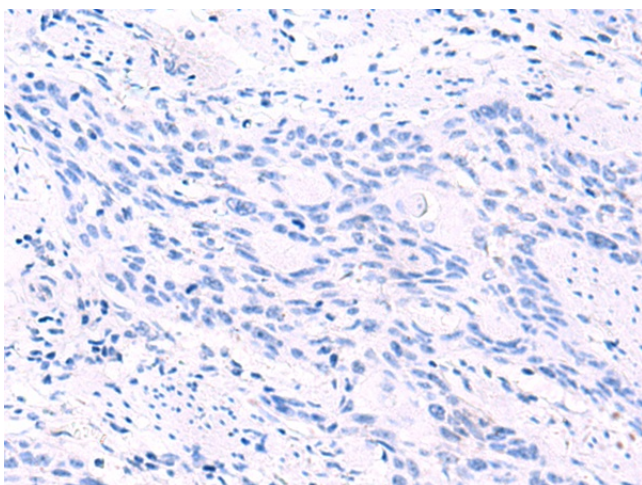
Immunohistochemistry of paraffin-embedded Human tonsil tissue using TA370651 (ARIH2 Antibody) at dilution 1/80 (Original magnification: \times 200)



Immunohistochemistry of paraffin-embedded Human tonsil tissue using TA370651 (ARIH2 Antibody) at dilution 1/80, treated with fusion protein. (Original magnification: $\times 200$)



Immunohistochemistry of paraffin-embedded Human esophagus cancer tissue using TA370651 (ARIH2 Antibody) at dilution 1/80 (Original magnification: $\times 200$)



Immunohistochemistry of paraffin-embedded Human esophagus cancer tissue using TA370651 (ARIH2 Antibody) at dilution 1/80, treated with fusion protein. (Original magnification: $\times 200$)