

Product datasheet for **TA370645**

GPLOW Rabbit Polyclonal Antibody

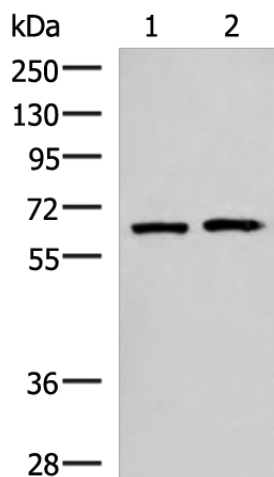
Product data:

Product Type:	Primary Antibodies
Applications:	IHC, WB
Recommended Dilution:	WB: 1000-5000 WB positive control: 293T and Jurkat cell lysates IHC: 100-500 Positive control: Human tonsil Predicted cell location: Nucleus
Reactivity:	Human
Host:	Rabbit
Isotype:	IgG
Clonality:	Polyclonal
Immunogen:	Fusion protein of human GPLOW
Formulation:	pH7.4 PBS, 0.05% NaN ₃ , 40% Glycerol
Concentration:	lot specific
Purification:	Antigen affinity purification
Conjugation:	Unconjugated
Storage:	Store at -20°C.
Stability:	1 year
Predicted Protein Size:	53 kDa
Gene Name:	G-patch domain and KOW motifs
Database Link:	Entrez Gene 27238 Human Q92917
Background:	This gene encodes a putative RNA-binding protein containing G-patch and KOW (Kyprides, Ouzounis, Woese) domains. The encoded protein interacts directly with protein kinase A and protein kinase X and is also found associated with the spliceosome.
Synonyms:	4432411B18; DXErtd697e; DXImx41e; T54

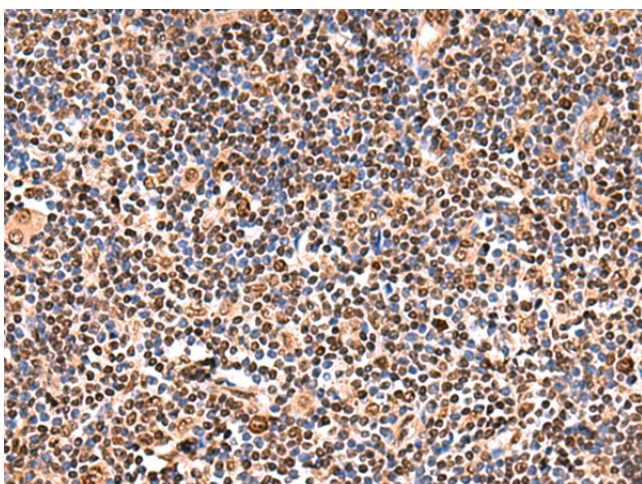


[View online »](#)

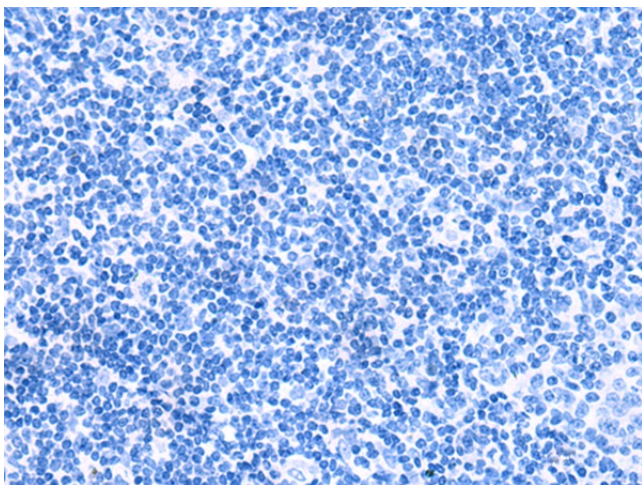
Product images:



Gel: 8%SDS-PAGE
 Lysate: 40 µg
 Lane 1-2: 293T and Jurkat cell lysates
 Primary antibody: TA370645 (GPLOW Antibody)
 at dilution 1/2000
 Secondary antibody: Goat anti rabbit IgG at
 1/5000 dilution
 Exposure time: 30 seconds



Immunohistochemistry of paraffin-embedded
 Human tonsil tissue using TA370645 (GPLOW
 Antibody) at dilution 1/140 (Original
 magnification: ×200)



Immunohistochemistry of paraffin-embedded Human tonsil tissue using TA370645 (GPKOW Antibody) at dilution 1/140, treated with fusion protein. (Original magnification: $\times 200$)