

## Product datasheet for **TA370641S**

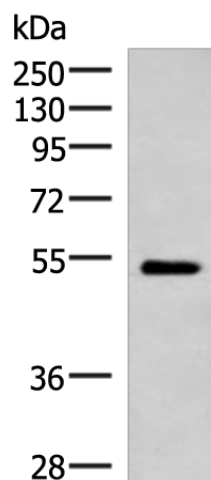
### FUCA2 Rabbit Polyclonal Antibody

#### Product data:

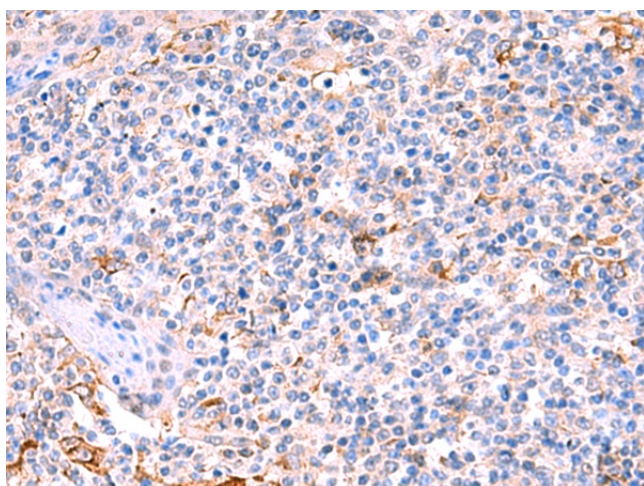
Product Type:	Primary Antibodies
Applications:	IHC, WB
Recommended Dilution:	WB: 1000-5000 WB positive control: Mouse heart tissue lysate IHC: 50-300 Positive control: Human tonsil Predicted cell location: Cytoplasm
Reactivity:	Human, Mouse, Rat
Host:	Rabbit
Isotype:	IgG
Clonality:	Polyclonal
Immunogen:	Fusion protein of human FUCA2
Formulation:	pH7.4 PBS, 0.05% NaN <sub>3</sub> , 40% Glycerol
Purification:	Antigen affinity purification
Conjugation:	Unconjugated
Storage:	Store at -20°C.
Stability:	1 year
Predicted Protein Size:	54 kDa
Gene Name:	fucosidase, alpha-L- 2, plasma
Database Link:	<a href="#">Entrez Gene 2519 Human Q9BTY2</a>
Background:	This gene encodes a plasma alpha-L-fucosidase, which represents 10-20% of the total cellular fucosidase activity. The protein is a member of the glycosyl hydrolase 29 family, and catalyzes the hydrolysis of the alpha-1,6-linked fucose joined to the reducing-end N-acetylglucosamine of the carbohydrate moieties of glycoproteins. This enzyme is essential for Helicobacter pylori adhesion to human gastric cancer cells.
Synonyms:	dj20N2.5; MGC1314



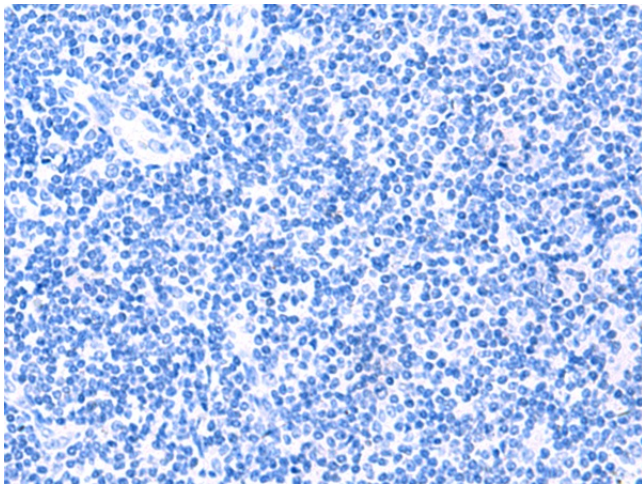
[View online »](#)

**Product images:**

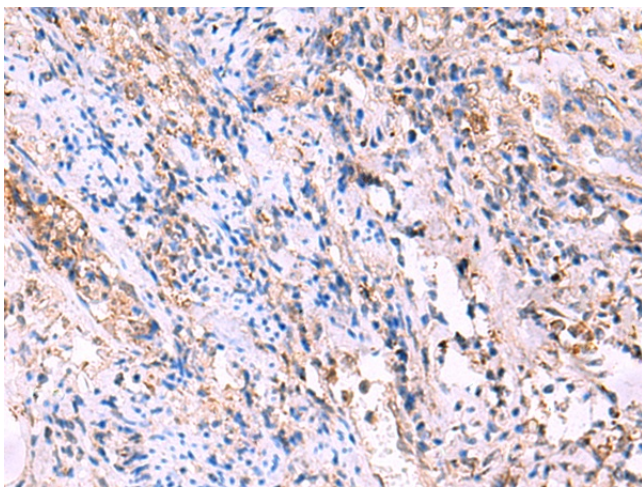
Gel: 8%SDS-PAGE  
Lysate: 40  $\mu$ g  
Lane: Mouse heart tissue lysate  
Primary antibody: [TA370641] (FUCA2 Antibody)  
at dilution 1/1000  
Secondary antibody: Goat anti rabbit IgG at  
1/5000 dilution  
Exposure time: 1 minute



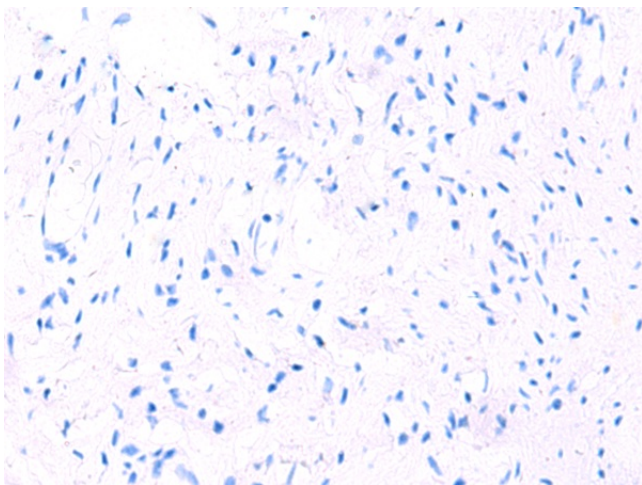
Immunohistochemistry of paraffin-embedded  
Human tonsil tissue using [TA370641] (FUCA2  
Antibody) at dilution 1/70 (Original magnification:  
 $\times$ 200)



Immunohistochemistry of paraffin-embedded Human tonsil tissue using [TA370641] (FUCA2 Antibody) at dilution 1/70, treated with fusion protein. (Original magnification:  $\times 200$ )



Immunohistochemistry of paraffin-embedded Human cervical cancer tissue using [TA370641] (FUCA2 Antibody) at dilution 1/70 (Original magnification:  $\times 200$ )



Immunohistochemistry of paraffin-embedded Human cervical cancer tissue using [TA370641] (FUCA2 Antibody) at dilution 1/70, treated with fusion protein. (Original magnification:  $\times 200$ )