

## Product datasheet for **TA370636S**

### GALK2 Rabbit Polyclonal Antibody

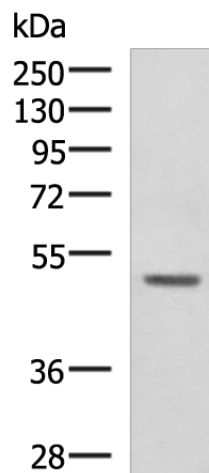
#### Product data:

Product Type:	Primary Antibodies
Applications:	IHC, WB
Recommended Dilution:	WB: 1000-5000 WB positive control: 293T cell lysate IHC: 50-300 Positive control: Human tonsil Predicted cell location: Cytoplasm
Reactivity:	Human, Mouse, Rat
Host:	Rabbit
Isotype:	IgG
Clonality:	Polyclonal
Immunogen:	Fusion protein of human GALK2
Formulation:	pH7.4 PBS, 0.05% NaN <sub>3</sub> , 40% Glycerol
Purification:	Antigen affinity purification
Conjugation:	Unconjugated
Storage:	Store at -20°C.
Stability:	1 year
Predicted Protein Size:	50 kDa
Gene Name:	galactokinase 2
Database Link:	<a href="#">Entrez Gene 2585 Human Q01415</a>
Background:	This gene encodes a highly efficient N-acetylgalactosamine (GalNAc) kinase, which has galactokinase activity when galactose is present at high concentrations. The encoded protein is a member of the GHMP kinase family. Alternative splicing results in multiple transcript variants.
Synonyms:	GK2; MGC1745



[View online »](#)

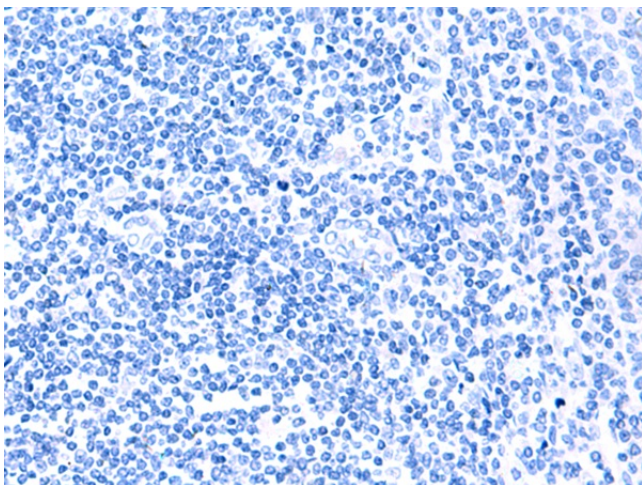
## Product images:



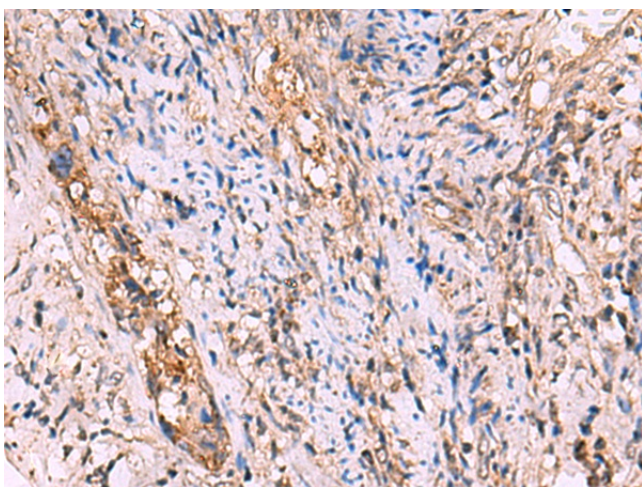
Gel: 8%SDS-PAGE  
Lysate: 40  $\mu$ g  
Lane: 293T cell lysate  
Primary antibody: [TA370636] (GALK2 Antibody)  
at dilution 1/1350  
Secondary antibody: Goat anti rabbit IgG at  
1/5000 dilution  
Exposure time: 1 minute



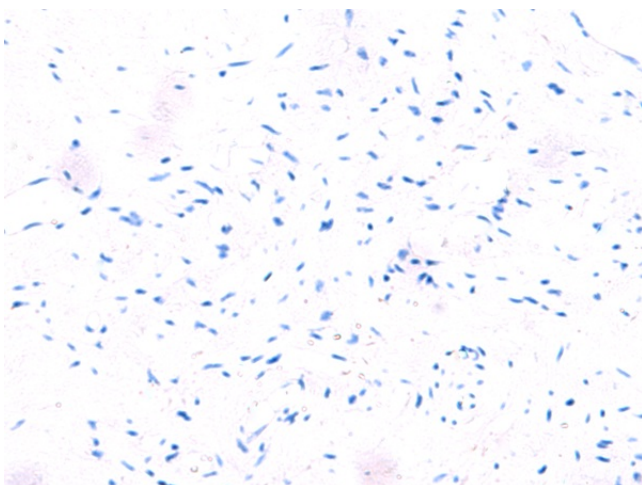
Immunohistochemistry of paraffin-embedded  
Human tonsil tissue using [TA370636] (GALK2  
Antibody) at dilution 1/95 (Original magnification:  
 $\times$ 200)



Immunohistochemistry of paraffin-embedded Human tonsil tissue using [TA370636] (GALK2 Antibody) at dilution 1/95, treated with fusion protein. (Original magnification:  $\times 200$ )



Immunohistochemistry of paraffin-embedded Human cervical cancer tissue using [TA370636] (GALK2 Antibody) at dilution 1/95 (Original magnification:  $\times 200$ )



Immunohistochemistry of paraffin-embedded Human cervical cancer tissue using [TA370636] (GALK2 Antibody) at dilution 1/95, treated with fusion protein. (Original magnification:  $\times 200$ )