

Product datasheet for **TA370636**

GALK2 Rabbit Polyclonal Antibody

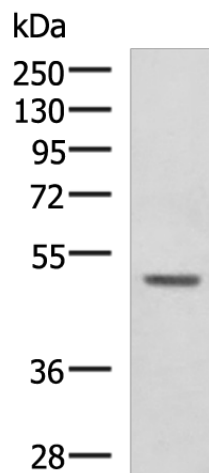
Product data:

Product Type:	Primary Antibodies
Applications:	IHC, WB
Recommended Dilution:	WB: 1000-5000 WB positive control: 293T cell lysate IHC: 50-300 Positive control: Human tonsil Predicted cell location: Cytoplasm
Reactivity:	Human, Mouse, Rat
Host:	Rabbit
Isotype:	IgG
Clonality:	Polyclonal
Immunogen:	Fusion protein of human GALK2
Formulation:	pH7.4 PBS, 0.05% NaN ₃ , 40% Glycerol
Concentration:	lot specific
Purification:	Antigen affinity purification
Conjugation:	Unconjugated
Storage:	Store at -20°C.
Stability:	1 year
Predicted Protein Size:	50 kDa
Gene Name:	galactokinase 2
Database Link:	Entrez Gene 2585 Human Q01415
Background:	This gene encodes a highly efficient N-acetylgalactosamine (GalNAc) kinase, which has galactokinase activity when galactose is present at high concentrations. The encoded protein is a member of the GHMP kinase family. Alternative splicing results in multiple transcript variants.
Synonyms:	GK2; MGC1745



[View online »](#)

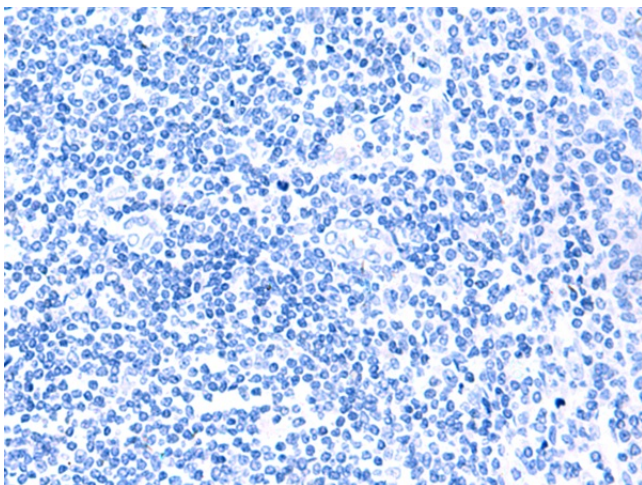
Product images:



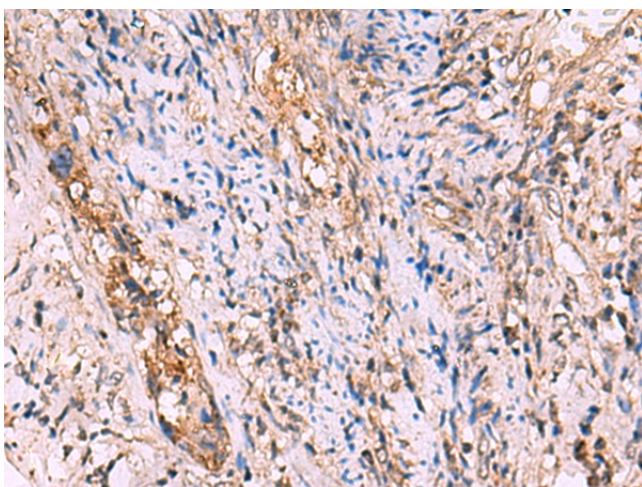
Gel: 8%SDS-PAGE
Lysate: 40 μ g
Lane: 293T cell lysate
Primary antibody: TA370636 (GALK2 Antibody) at dilution 1/1350
Secondary antibody: Goat anti rabbit IgG at 1/5000 dilution
Exposure time: 1 minute



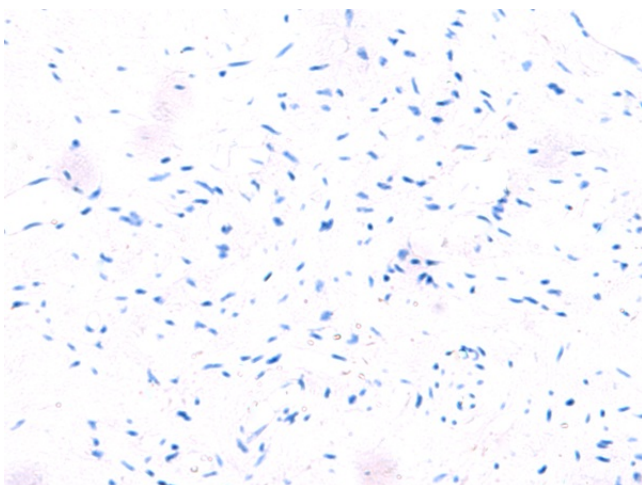
Immunohistochemistry of paraffin-embedded Human tonsil tissue using TA370636 (GALK2 Antibody) at dilution 1/95 (Original magnification: \times 200)



Immunohistochemistry of paraffin-embedded Human tonsil tissue using TA370636 (GALK2 Antibody) at dilution 1/95, treated with fusion protein. (Original magnification: x200)



Immunohistochemistry of paraffin-embedded Human cervical cancer tissue using TA370636 (GALK2 Antibody) at dilution 1/95 (Original magnification: x200)



Immunohistochemistry of paraffin-embedded Human cervical cancer tissue using TA370636 (GALK2 Antibody) at dilution 1/95, treated with fusion protein. (Original magnification: x200)