

## Product datasheet for **TA370629**

### SFRS17A (AKAP17A) Rabbit Polyclonal Antibody

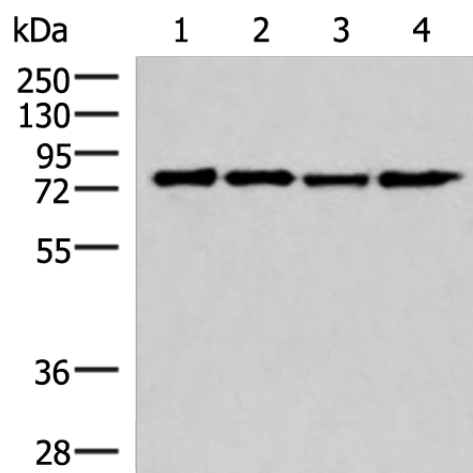
#### Product data:

Product Type:	Primary Antibodies
Applications:	WB
Recommended Dilution:	WB: 500-2000 WB positive control: K562, Jurkat, Hela and 293T cell lysates
Reactivity:	Human
Host:	Rabbit
Isotype:	IgG
Clonality:	Polyclonal
Immunogen:	Fusion protein of human AKAP17A
Formulation:	pH7.4 PBS, 0.05% NaN <sub>3</sub> , 40% Glycerol
Concentration:	lot specific
Purification:	Antigen affinity purification
Conjugation:	Unconjugated
Storage:	Store at -20°C.
Stability:	1 year
Predicted Protein Size:	81 kDa
Gene Name:	A-kinase anchoring protein 17A
Database Link:	<a href="#">Entrez Gene 8227 Human Q02040</a>
Background:	This locus encodes a protein kinase A anchoring protein. The encoded protein is part of the spliceosome complex and is involved in the regulation of alternate splicing in some mRNA precursors. Alternatively spliced transcript variants have been identified for this gene.
Synonyms:	Akap17a



[View online »](#)

## Product images:



Gel: 8%SDS-PAGE

Lysate: 40  $\mu$ g

Lane 1-4: K562

Jurkat

Hela and 293T cell lysates

Primary antibody: TA370629 (AKAP17A Antibody)  
at dilution 1/650

Secondary antibody: Goat anti rabbit IgG at  
1/5000 dilution

Exposure time: 10 seconds