

## Product datasheet for **TA370628S**

### beta II Tubulin (TUBB2A) Rabbit Polyclonal Antibody

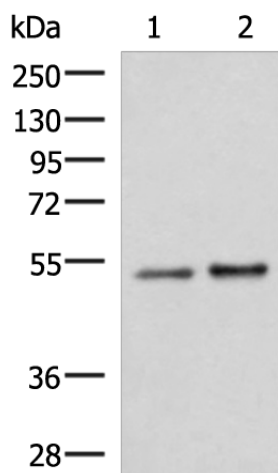
#### Product data:

Product Type:	Primary Antibodies
Applications:	IHC, WB
Recommended Dilution:	WB: 500-2000 WB positive control: Mouse brain tissue and Rat brain tissue lysates IHC: 50-300 Positive control: Human prostate cancer Predicted cell location: Cytoplasm
Reactivity:	Human, Mouse, Rat
Host:	Rabbit
Isotype:	IgG
Clonality:	Polyclonal
Immunogen:	Fusion protein of human TUBB2A
Formulation:	pH7.4 PBS, 0.05% NaN <sub>3</sub> , 40% Glycerol
Purification:	Antigen affinity purification
Conjugation:	Unconjugated
Storage:	Store at -20°C.
Stability:	1 year
Predicted Protein Size:	50 kDa
Gene Name:	tubulin beta 2A class IIa
Database Link:	<a href="#">Entrez Gene 7280 Human Q13885</a>
Background:	Microtubules, key participants in processes such as mitosis and intracellular transport, are composed of heterodimers of alpha- and beta-tubulins. The protein encoded by this gene is a beta-tubulin. Defects in this gene are associated with complex cortical dysplasia with other brain malformations-5. Two transcript variants encoding distinct isoforms have been found for this gene.
Synonyms:	dj40E16.7; TUBB; TUBB2; TUBB2B

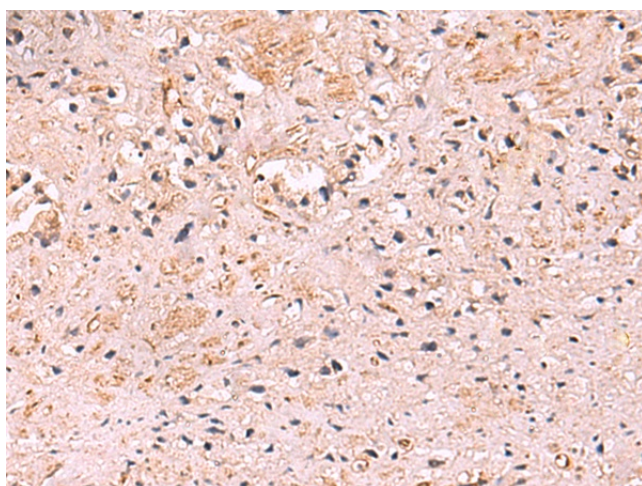


[View online »](#)

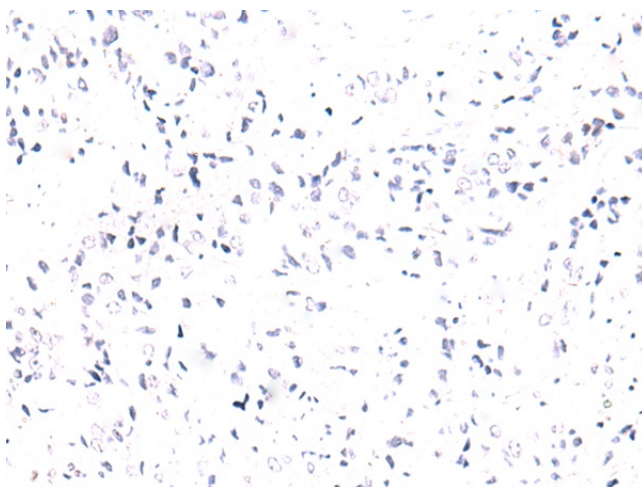
Product images:



Gel: 8%SDS-PAGE  
 Lysate: 40 µg  
 Lane 1-2: Mouse brain tissue and Rat brain tissue lysates  
 Primary antibody: [TA370628] (TUBB2A Antibody) at dilution 1/550  
 Secondary antibody: Goat anti rabbit IgG at 1/5000 dilution  
 Exposure time: 3 seconds



Immunohistochemistry of paraffin-embedded Human prostate cancer tissue using [TA370628] (TUBB2A Antibody) at dilution 1/85 (Original magnification: ×200)



Immunohistochemistry of paraffin-embedded Human prostate cancer tissue using [TA370628] (TUBB2A Antibody) at dilution 1/85, treated with fusion protein. (Original magnification: ×200)