

## Product datasheet for **TA370623S**

### ECSIT Rabbit Polyclonal Antibody

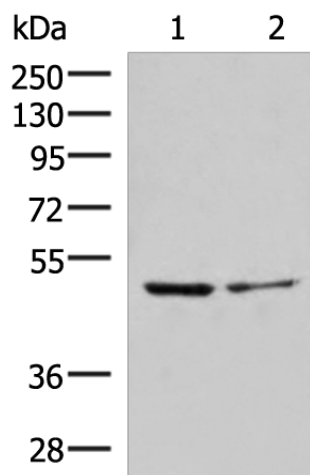
#### Product data:

Product Type:	Primary Antibodies
Applications:	IHC, WB
Recommended Dilution:	WB: 1000-5000 WB positive control: Jurkat and HepG2 cell lysates IHC: 50-300 Positive control: Human tonsil Predicted cell location: Cytoplasm
Reactivity:	Human
Host:	Rabbit
Isotype:	IgG
Clonality:	Polyclonal
Immunogen:	Fusion protein of human ECSIT
Formulation:	pH7.4 PBS, 0.05% NaN <sub>3</sub> , 40% Glycerol
Purification:	Antigen affinity purification
Conjugation:	Unconjugated
Storage:	Store at -20°C.
Stability:	1 year
Predicted Protein Size:	49 kDa
Gene Name:	ECSIT signalling integrator
Database Link:	<a href="#">Entrez Gene 51295 Human Q9BQ95</a>
Background:	Adapter protein of the Toll-like and IL-1 receptor signaling pathway that is involved in the activation of NF-kappa-B via MAP3K1. Promotes proteolytic activation of MAP3K1. Involved in the BMP signaling pathway. Required for normal embryonic development (By similarity).
Synonyms:	SITPEC

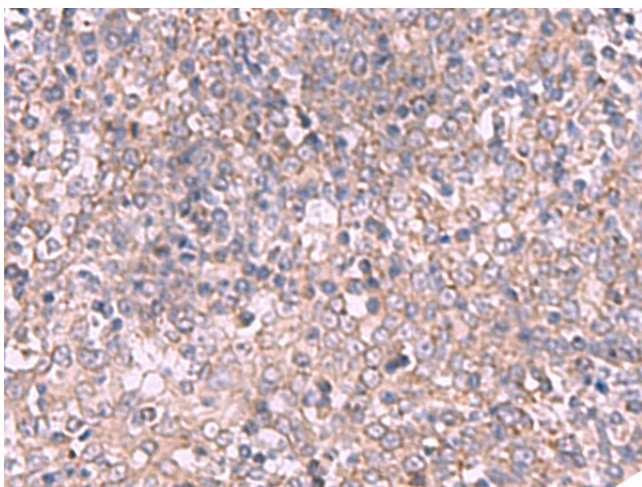


[View online »](#)

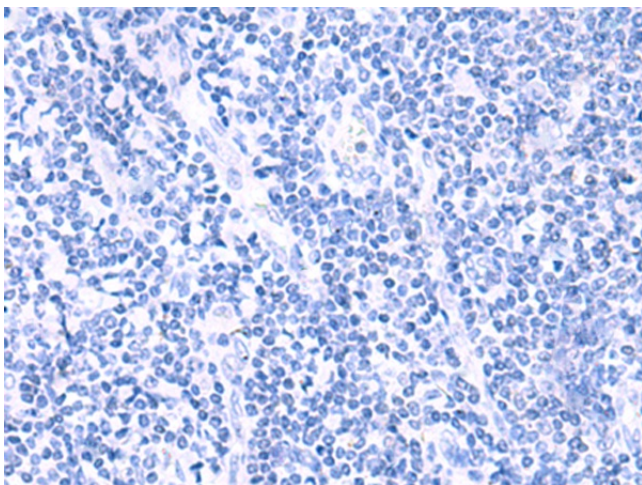
## Product images:



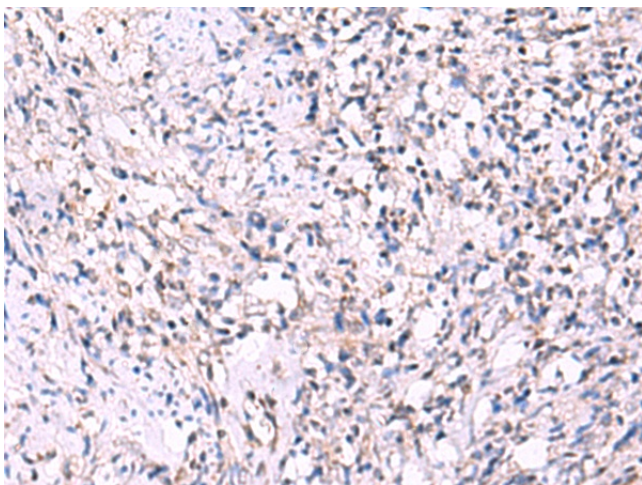
Gel: 8%SDS-PAGE  
Lysate: 40  $\mu$ g  
Lane 1-2: Jurkat and HepG2 cell lysates  
Primary antibody: [TA370623] (ECSIT Antibody) at dilution 1/1000  
Secondary antibody: Goat anti rabbit IgG at 1/5000 dilution  
Exposure time: 1 minute



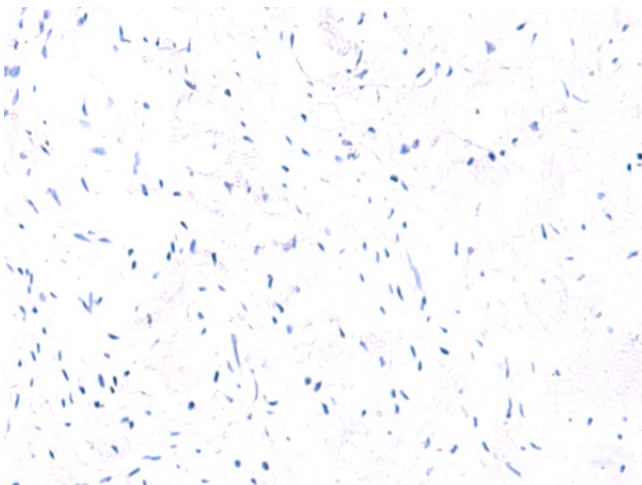
Immunohistochemistry of paraffin-embedded Human tonsil tissue using [TA370623] (ECSIT Antibody) at dilution 1/70 (Original magnification:  $\times$ 200)



Immunohistochemistry of paraffin-embedded Human tonsil tissue using [TA370623] (ECSIT Antibody) at dilution 1/70, treated with fusion protein. (Original magnification: x200)



Immunohistochemistry of paraffin-embedded Human cervical cancer tissue using [TA370623] (ECSIT Antibody) at dilution 1/70 (Original magnification: x200)



Immunohistochemistry of paraffin-embedded Human cervical cancer tissue using [TA370623] (ECSIT Antibody) at dilution 1/70, treated with fusion protein. (Original magnification: x200)