

Product datasheet for **TA370623**

ECSIT Rabbit Polyclonal Antibody

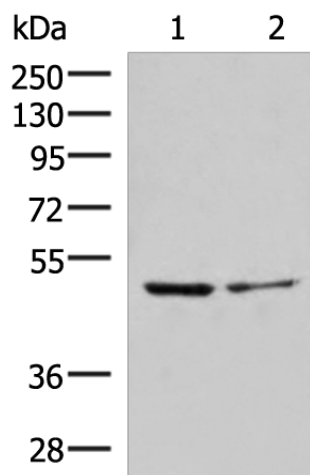
Product data:

Product Type:	Primary Antibodies
Applications:	IHC, WB
Recommended Dilution:	WB: 1000-5000 WB positive control: Jurkat and HepG2 cell lysates IHC: 50-300 Positive control: Human tonsil Predicted cell location: Cytoplasm
Reactivity:	Human
Host:	Rabbit
Isotype:	IgG
Clonality:	Polyclonal
Immunogen:	Fusion protein of human ECSIT
Formulation:	pH7.4 PBS, 0.05% NaN ₃ , 40% Glycerol
Concentration:	lot specific
Purification:	Antigen affinity purification
Conjugation:	Unconjugated
Storage:	Store at -20°C.
Stability:	1 year
Predicted Protein Size:	49 kDa
Gene Name:	ECSIT signalling integrator
Database Link:	Entrez Gene 51295 Human Q9BQ95
Background:	Adapter protein of the Toll-like and IL-1 receptor signaling pathway that is involved in the activation of NF-kappa-B via MAP3K1. Promotes proteolytic activation of MAP3K1. Involved in the BMP signaling pathway. Required for normal embryonic development (By similarity).
Synonyms:	SITPEC



[View online »](#)

Product images:



Gel: 8%SDS-PAGE

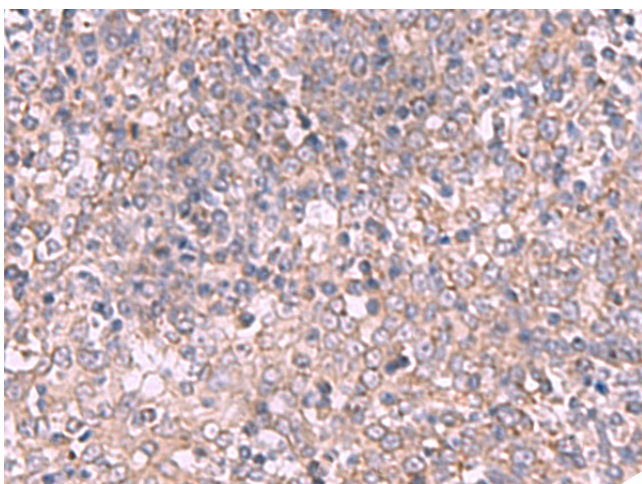
Lysate: 40 μ g

Lane 1-2: Jurkat and HepG2 cell lysates

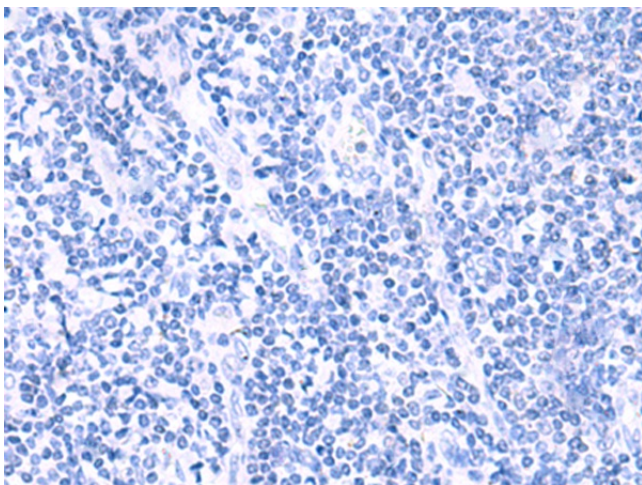
Primary antibody: TA370623 (ECSIT Antibody) at dilution 1/1000

Secondary antibody: Goat anti rabbit IgG at 1/5000 dilution

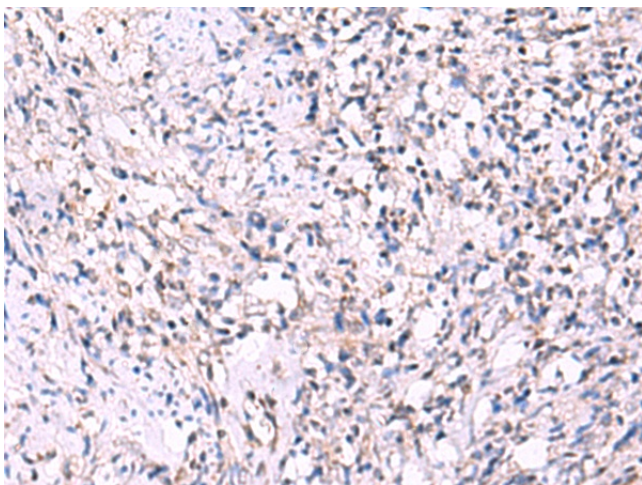
Exposure time: 1 minute



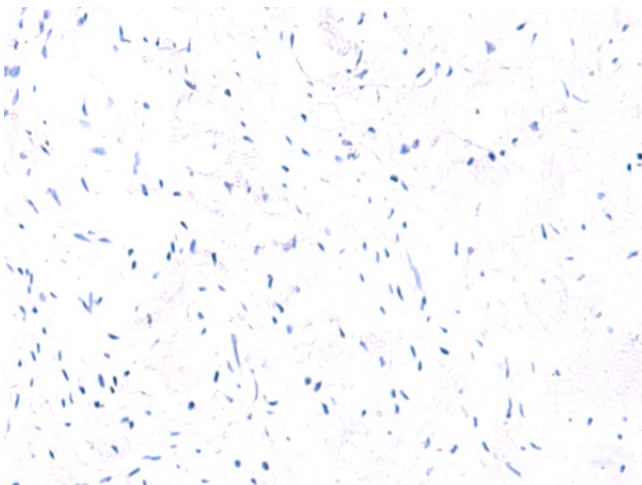
Immunohistochemistry of paraffin-embedded Human tonsil tissue using TA370623 (ECSIT Antibody) at dilution 1/70 (Original magnification: \times 200)



Immunohistochemistry of paraffin-embedded Human tonsil tissue using TA370623 (ECSIT Antibody) at dilution 1/70, treated with fusion protein. (Original magnification: x200)



Immunohistochemistry of paraffin-embedded Human cervical cancer tissue using TA370623 (ECSIT Antibody) at dilution 1/70 (Original magnification: x200)



Immunohistochemistry of paraffin-embedded Human cervical cancer tissue using TA370623 (ECSIT Antibody) at dilution 1/70, treated with fusion protein. (Original magnification: x200)