

Product datasheet for **TA370620**

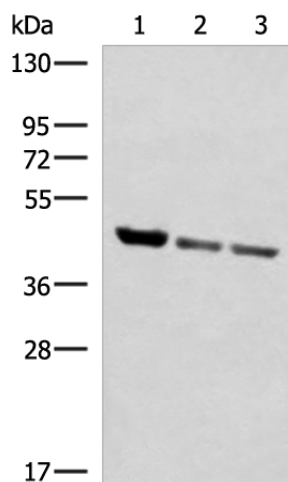
SCCPDH Rabbit Polyclonal Antibody

Product data:

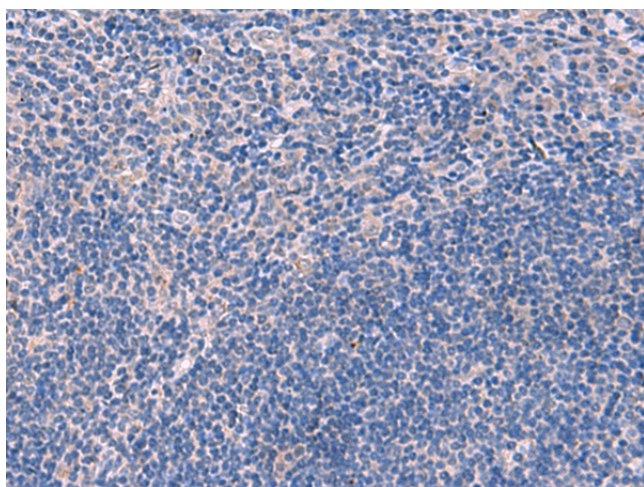
Product Type:	Primary Antibodies
Applications:	IHC, WB
Recommended Dilution:	WB: 1000-5000 WB positive control: Human fetal liver tissue, PC-3 and A172 cell lysates IHC: 50-300 Positive control: Human tonsil Predicted cell location: Cytoplasm or Nucleus
Reactivity:	Human, Mouse, Rat
Host:	Rabbit
Isotype:	IgG
Clonality:	Polyclonal
Immunogen:	Fusion protein of human SCCPDH
Formulation:	pH7.4 PBS, 0.05% NaN ₃ , 40% Glycerol
Concentration:	lot specific
Purification:	Antigen affinity purification
Conjugation:	Unconjugated
Storage:	Store at -20°C.
Stability:	1 year
Predicted Protein Size:	47 kDa
Gene Name:	saccharopine dehydrogenase (putative)
Database Link:	Entrez Gene 51097 Human Q8NBX0
Background:	SCCPDH belongs to the saccharopine dehydrogenase family. The exact function of SCCPDH remains unknown.
Synonyms:	CGI-49; FLJ43187; NET11; RP11-439E19.2



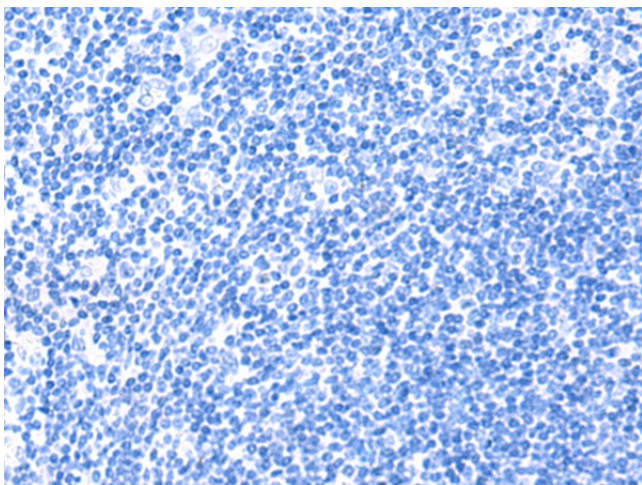
[View online »](#)

Product images:

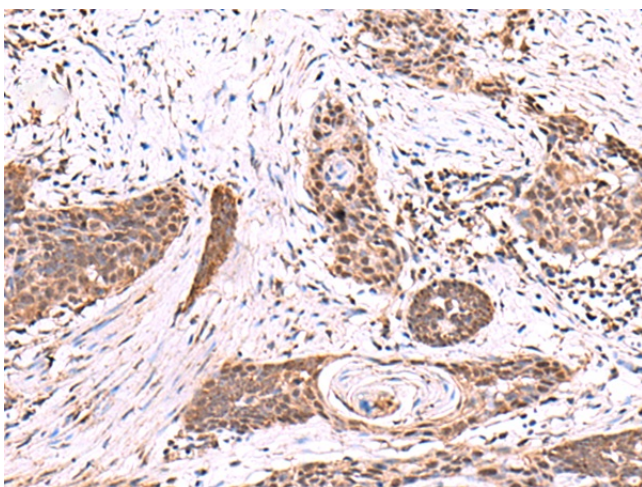
Gel: 8%SDS-PAGE
Lysate: 40 μ g
Lane 1-3: Human fetal liver tissue
PC-3 and A172 cell lysates
Primary antibody: TA370620 (SCCPDH Antibody)
at dilution 1/1000
Secondary antibody: Goat anti rabbit IgG at
1/5000 dilution
Exposure time: 1 minute



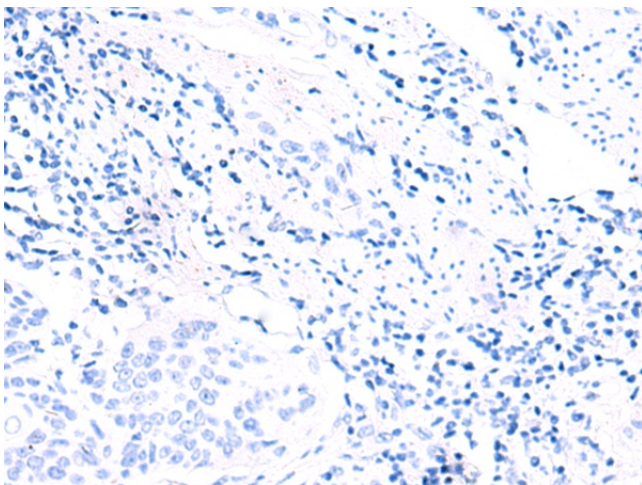
Immunohistochemistry of paraffin-embedded
Human tonsil tissue using TA370620 (SCCPDH
Antibody) at dilution 1/85 (Original magnification:
 \times 200)



Immunohistochemistry of paraffin-embedded Human tonsil tissue using TA370620 (SCCPDH Antibody) at dilution 1/85, treated with fusion protein. (Original magnification: $\times 200$)



Immunohistochemistry of paraffin-embedded Human esophagus cancer tissue using TA370620 (SCCPDH Antibody) at dilution 1/85 (Original magnification: $\times 200$)



Immunohistochemistry of paraffin-embedded Human esophagus cancer tissue using TA370620 (SCCPDH Antibody) at dilution 1/85, treated with fusion protein. (Original magnification: $\times 200$)