

Product datasheet for **TA370617S**

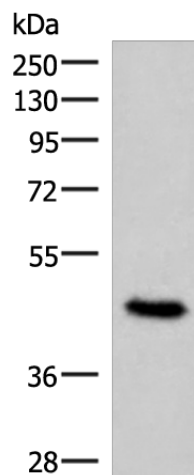
COPS3 Rabbit Polyclonal Antibody

Product data:

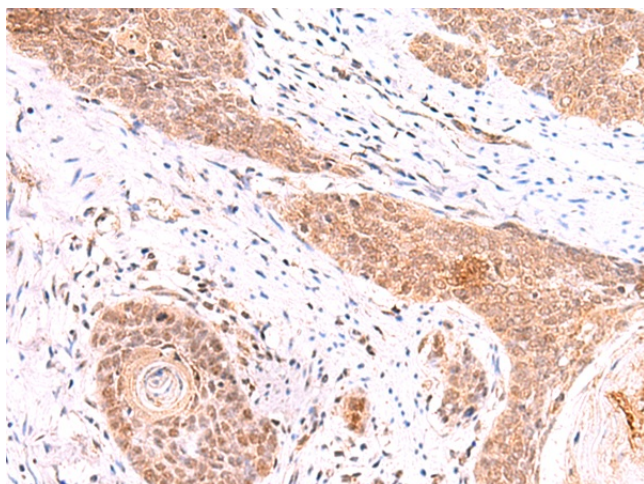
Product Type:	Primary Antibodies
Applications:	IHC, WB
Recommended Dilution:	WB: 500-2000 WB positive control: 293T cell lysate IHC: 50-300 Positive control: Human esophagus cancer Predicted cell location: Cytoplasm and Nucleus
Reactivity:	Human, Mouse, Rat
Host:	Rabbit
Isotype:	IgG
Clonality:	Polyclonal
Immunogen:	Fusion protein of human COPS3
Formulation:	pH7.4 PBS, 0.05% NaN ₃ , 40% Glycerol
Purification:	Antigen affinity purification
Conjugation:	Unconjugated
Storage:	Store at -20°C.
Stability:	1 year
Predicted Protein Size:	48 kDa
Gene Name:	COP9 signalosome subunit 3
Database Link:	Entrez Gene 8533 Human Q9UNS2
Background:	The protein encoded by this gene possesses kinase activity that phosphorylates regulators involved in signal transduction. It phosphorylates I kappa-Balpa, p105, and c-Jun. It acts as a docking site for complex-mediated phosphorylation. The gene is located within the Smith-Magenis syndrome region on chromosome 17. Several transcript variants encoding different isoforms have been found for this gene.
Synonyms:	CSN3; SGN3



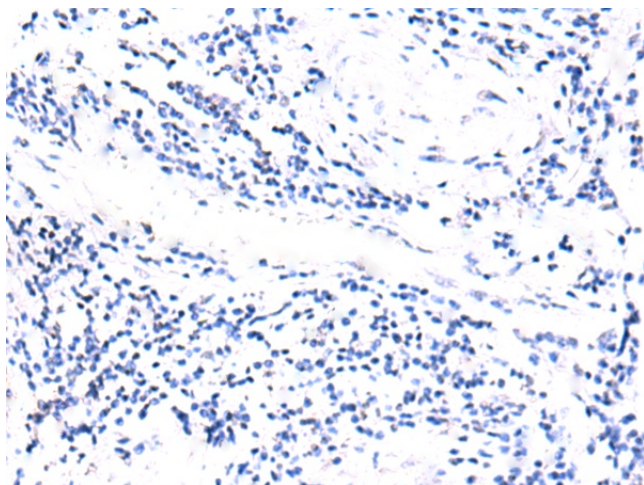
[View online »](#)

Product images:

Gel: 8%SDS-PAGE
Lysate: 40 μ g
Lane: 293T cell lysate
Primary antibody: [TA370617] (COPS3 Antibody)
at dilution 1/450
Secondary antibody: Goat anti rabbit IgG at
1/5000 dilution
Exposure time: 20 seconds



Immunohistochemistry of paraffin-embedded
Human esophagus cancer tissue using
[TA370617] (COPS3 Antibody) at dilution 1/60
(Original magnification: \times 200)



Immunohistochemistry of paraffin-embedded
Human esophagus cancer tissue using
[TA370617] (COPS3 Antibody) at dilution 1/60,
treated with fusion protein. (Original
magnification: \times 200)