

## Product datasheet for **TA370616S**

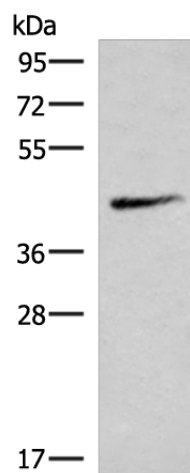
### nSMase (SMPD2) Rabbit Polyclonal Antibody

#### Product data:

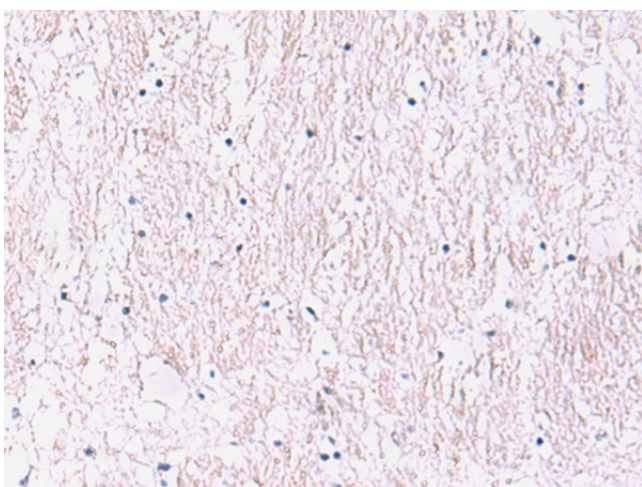
Product Type:	Primary Antibodies
Applications:	IHC, WB
Recommended Dilution:	WB: 1000-5000 WB positive control: Mouse lung tissue lysate IHC: 50-300 Positive control: Human brain Predicted cell location: Cytoplasm
Reactivity:	Human, Mouse, Rat
Host:	Rabbit
Isotype:	IgG
Clonality:	Polyclonal
Immunogen:	Fusion protein of human SMPD2
Formulation:	pH7.4 PBS, 0.05% NaN <sub>3</sub> , 40% Glycerol
Purification:	Antigen affinity purification
Conjugation:	Unconjugated
Storage:	Store at -20°C.
Stability:	1 year
Predicted Protein Size:	48 kDa
Gene Name:	sphingomyelin phosphodiesterase 2
Database Link:	<a href="#">Entrez Gene 6610 Human O60906</a>
Background:	This gene encodes a protein which was initially identified as a sphingomyelinase based on sequence similarity between bacterial sphingomyelinases and a yeast protein. Subsequent studies showed that its biological function is less likely to be as a sphingomyelinase and instead as a lysophospholipase.
Synonyms:	ISC1; Lyso-PAF-PLC; N-SMase; nSMase; NSMASE1



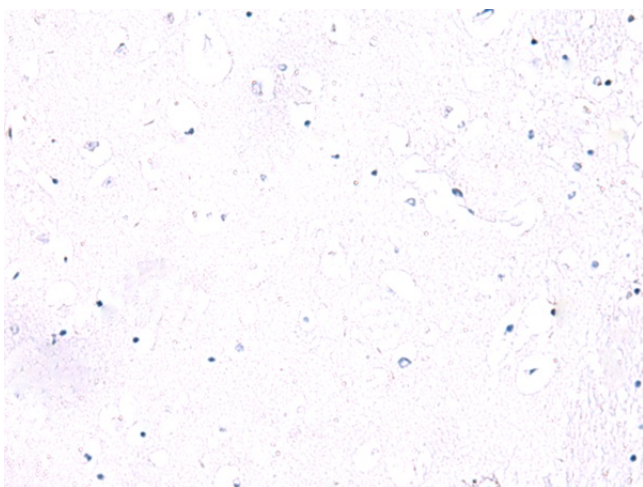
[View online »](#)

**Product images:**

Gel: 8%SDS-PAGE  
Lysate: 40  $\mu$ g  
Lane: Mouse lung tissue lysate  
Primary antibody: [TA370616] (SMPD2 Antibody)  
at dilution 1/1000  
Secondary antibody: Goat anti rabbit IgG at  
1/5000 dilution  
Exposure time: 10 minutes



Immunohistochemistry of paraffin-embedded  
Human brain tissue using [TA370616] (SMPD2  
Antibody) at dilution 1/90 (Original magnification:  
 $\times$ 200)



Immunohistochemistry of paraffin-embedded Human brain tissue using [TA370616] (SMPD2 Antibody) at dilution 1/90, treated with fusion protein. (Original magnification: x200)