

## Product datasheet for TA370611

### RHAG Rabbit Polyclonal Antibody

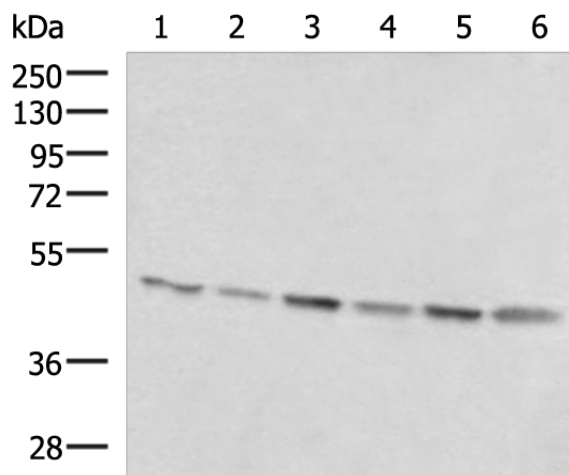
#### Product data:

Product Type:	Primary Antibodies
Applications:	IHC, WB
Recommended Dilution:	WB: 1000-5000 WB positive control: Hela, NIH/3T3, A172, 293T, K562 and HepG2 cell lysates IHC: 50-300 Positive control: Human tonsil Predicted cell location: Cell membrane
Reactivity:	Human, Mouse
Host:	Rabbit
Isotype:	IgG
Clonality:	Polyclonal
Immunogen:	Fusion protein of human RHAG
Formulation:	pH7.4 PBS, 0.05% NaN <sub>3</sub> , 40% Glycerol
Concentration:	lot specific
Purification:	Antigen affinity purification
Conjugation:	Unconjugated
Storage:	Store at -20°C.
Stability:	1 year
Predicted Protein Size:	44 kDa
Gene Name:	Rh-associated glycoprotein
Database Link:	<a href="#">Entrez Gene 6005 Human Q02094</a>
Background:	The protein encoded by this gene is erythrocyte-specific and is thought to be part of a membrane channel that transports ammonium and carbon dioxide across the blood cell membrane. The encoded protein appears to interact with Rh blood group antigens and Rh30 polypeptides. Defects in this gene are a cause of regulator type Rh-null hemolytic anemia (RHN), or Rh-deficiency syndrome.
Synonyms:	CD241; RH2; Rh50; Rh50A; Rh50GP; SLC42A1



[View online »](#)

## Product images:



Gel: 8%SDS-PAGE

Lysate: 40  $\mu$ g

Lane 1-6: HeLa

NIH/3T3

A172

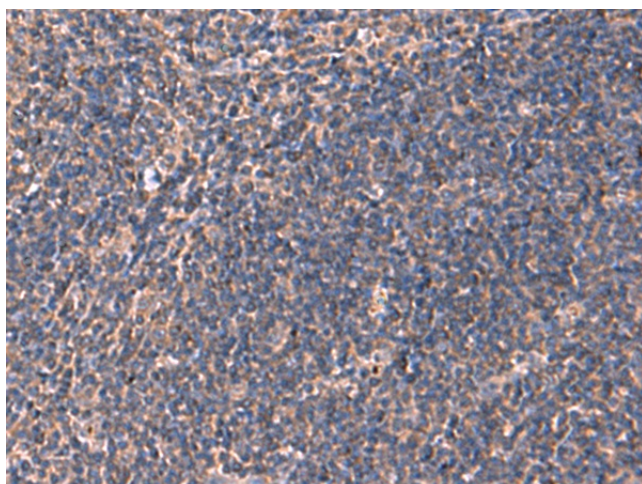
293T

K562 and HepG2 cell lysates

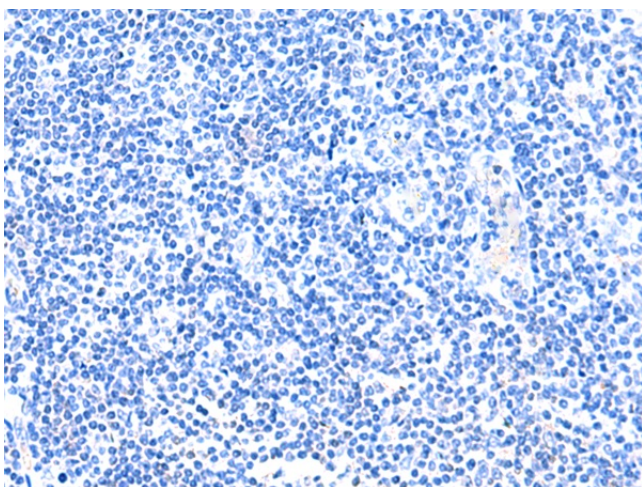
Primary antibody: TA370611 (RHAG Antibody) at dilution 1/1600

Secondary antibody: Goat anti rabbit IgG at 1/5000 dilution

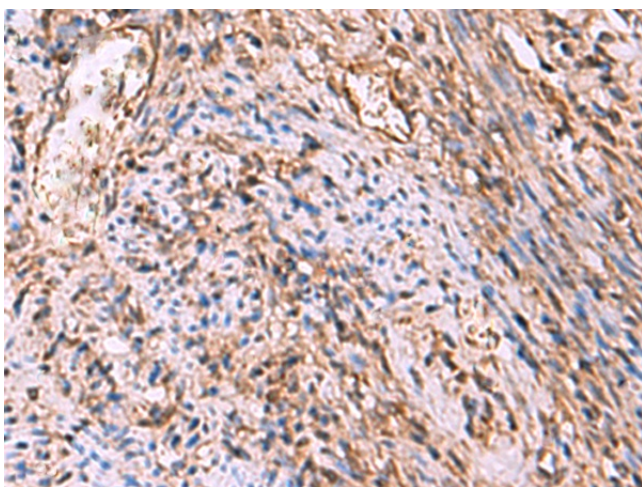
Exposure time: 30 seconds



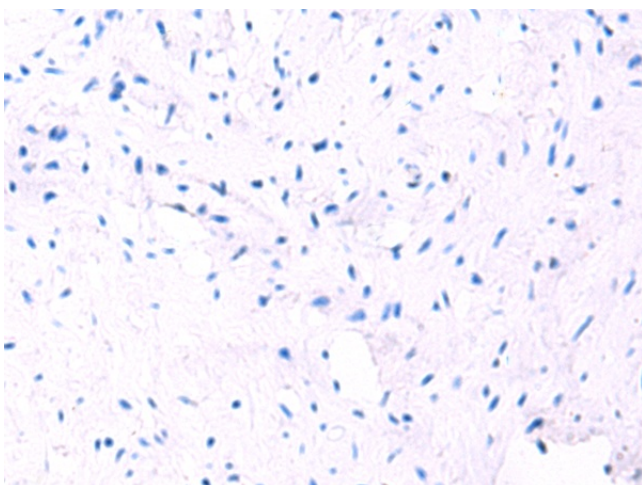
Immunohistochemistry of paraffin-embedded Human tonsil tissue using TA370611 (RHAG Antibody) at dilution 1/130 (Original magnification:  $\times$ 200)



Immunohistochemistry of paraffin-embedded Human tonsil tissue using TA370611 (RHAG Antibody) at dilution 1/130, treated with fusion protein. (Original magnification: x200)



Immunohistochemistry of paraffin-embedded Human cervical cancer tissue using TA370611 (RHAG Antibody) at dilution 1/130 (Original magnification: x200)



Immunohistochemistry of paraffin-embedded Human cervical cancer tissue using TA370611 (RHAG Antibody) at dilution 1/130, treated with fusion protein. (Original magnification: x200)