

Product datasheet for **TA370606S**

TUBD1 Rabbit Polyclonal Antibody

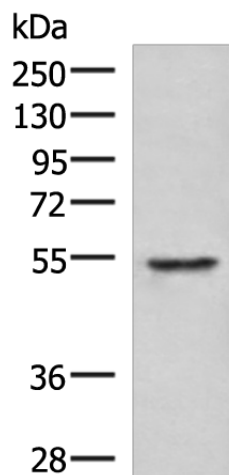
Product data:

Product Type:	Primary Antibodies
Applications:	IHC, WB
Recommended Dilution:	WB: 1000-5000 WB positive control: Jurkat cell lysate IHC: 50-300 Positive control: Human cervical cancer Predicted cell location: Cytoplasm
Reactivity:	Human, Mouse
Host:	Rabbit
Isotype:	IgG
Clonality:	Polyclonal
Immunogen:	Fusion protein of human TUBD1
Formulation:	pH7.4 PBS, 0.05% NaN ₃ , 40% Glycerol
Purification:	Antigen affinity purification
Conjugation:	Unconjugated
Storage:	Store at -20°C.
Stability:	1 year
Predicted Protein Size:	51 kDa
Gene Name:	tubulin delta 1
Database Link:	Entrez Gene 51174 Human Q9UJT1
Background:	In the elongating spermatid it is associated with the manchette, a specialized microtubule system present during reshaping of the sperm head.
Synonyms:	delta-tubulin; FLJ12709; TUBD

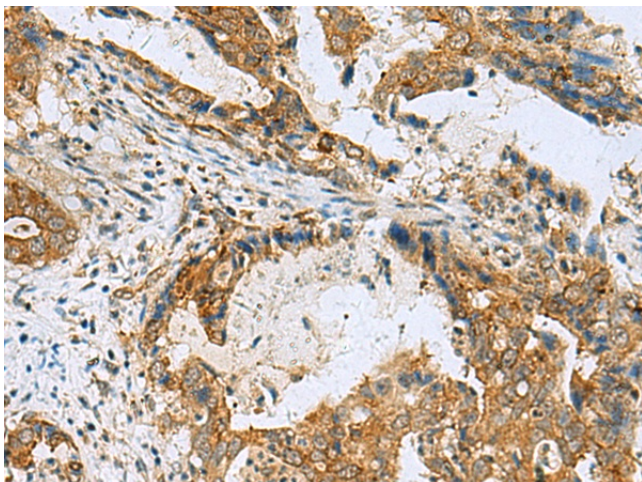


[View online »](#)

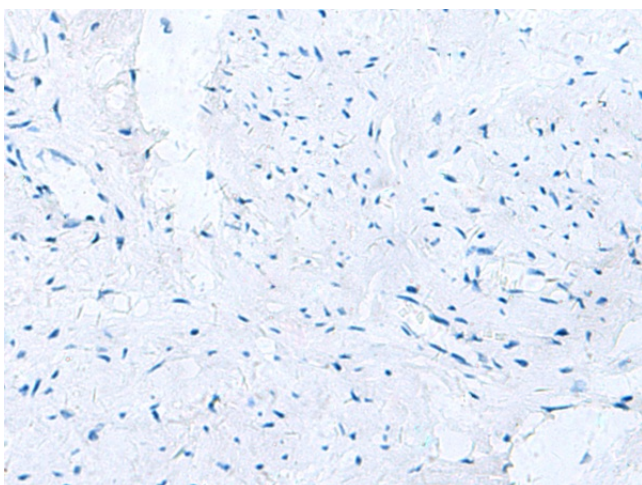
Product images:



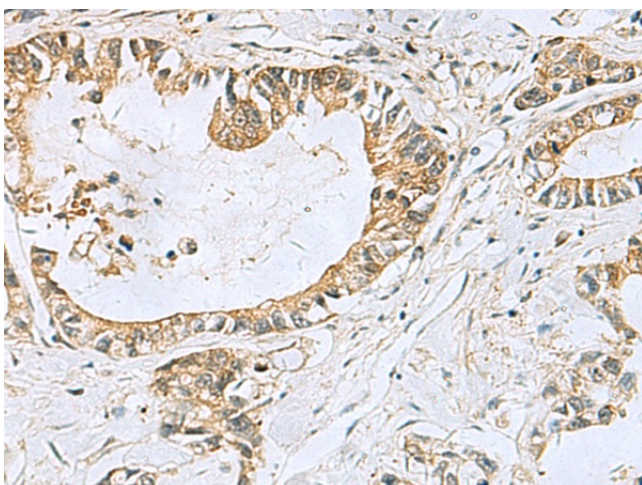
Gel: 8%SDS-PAGE
Lysate: 40 μ g
Lane: Jurkat cell lysate
Primary antibody: [TA370606] (TUBD1 Antibody)
at dilution 1/1000
Secondary antibody: Goat anti rabbit IgG at
1/5000 dilution
Exposure time: 5 seconds



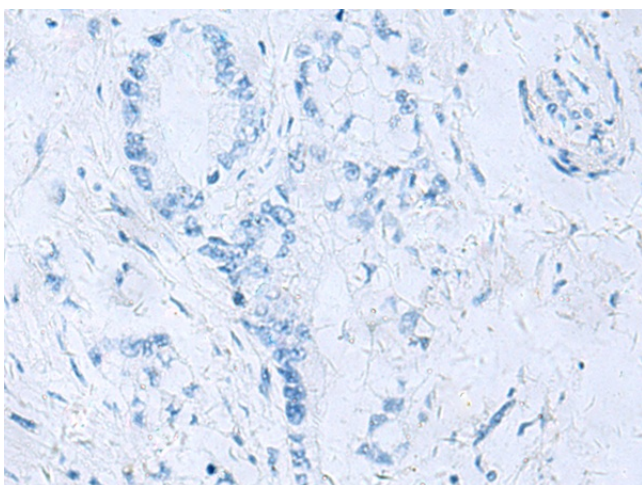
Immunohistochemistry of paraffin-embedded
Human cervical cancer tissue using [TA370606]
(TUBD1 Antibody) at dilution 1/70 (Original
magnification: \times 200)



Immunohistochemistry of paraffin-embedded Human cervical cancer tissue using [TA370606] (TUBD1 Antibody) at dilution 1/70, treated with fusion protein. (Original magnification: $\times 200$)



Immunohistochemistry of paraffin-embedded Human gastric cancer tissue using [TA370606] (TUBD1 Antibody) at dilution 1/70 (Original magnification: $\times 200$)



Immunohistochemistry of paraffin-embedded Human gastric cancer tissue using [TA370606] (TUBD1 Antibody) at dilution 1/70, treated with fusion protein. (Original magnification: $\times 200$)