

Product datasheet for **TA370606**

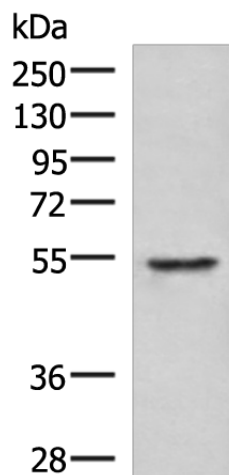
TUBD1 Rabbit Polyclonal Antibody

Product data:

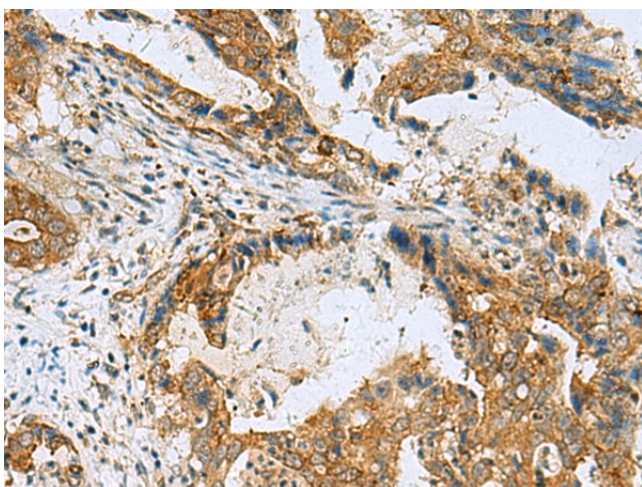
| | |
|-------------------------|--|
| Product Type: | Primary Antibodies |
| Applications: | IHC, WB |
| Recommended Dilution: | WB: 1000-5000 WB positive control: Jurkat cell lysate IHC: 50-300 Positive control: Human cervical cancer Predicted cell location: Cytoplasm |
| Reactivity: | Human, Mouse |
| Host: | Rabbit |
| Isotype: | IgG |
| Clonality: | Polyclonal |
| Immunogen: | Fusion protein of human TUBD1 |
| Formulation: | pH7.4 PBS, 0.05% NaN ₃ , 40% Glycerol |
| Concentration: | lot specific |
| Purification: | Antigen affinity purification |
| Conjugation: | Unconjugated |
| Storage: | Store at -20°C. |
| Stability: | 1 year |
| Predicted Protein Size: | 51 kDa |
| Gene Name: | tubulin delta 1 |
| Database Link: | Entrez Gene 51174 Human Q9UJT1 |
| Background: | In the elongating spermatid it is associated with the manchette, a specialized microtubule system present during reshaping of the sperm head. |
| Synonyms: | delta-tubulin; FLJ12709; TUBD |



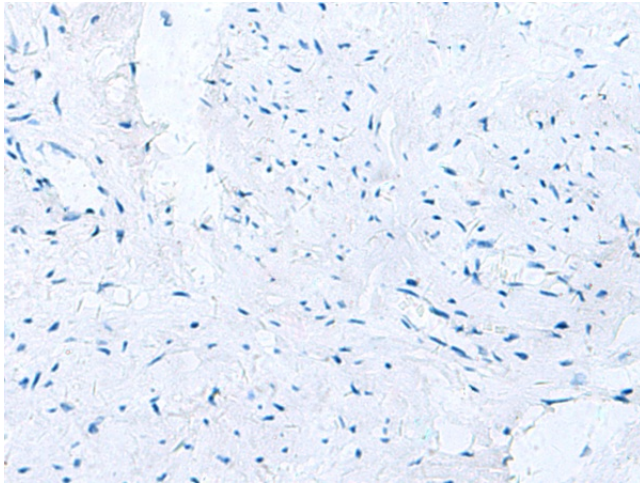
[View online »](#)

Product images:

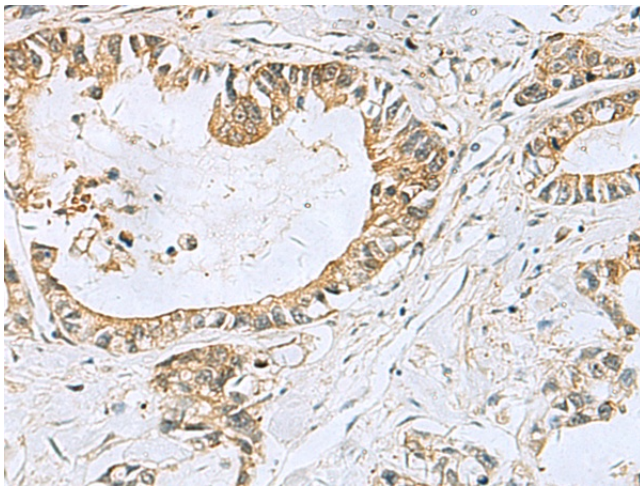
Gel: 8%SDS-PAGE
Lysate: 40 μ g
Lane: Jurkat cell lysate
Primary antibody: TA370606 (TUBD1 Antibody) at dilution 1/1000
Secondary antibody: Goat anti rabbit IgG at 1/5000 dilution
Exposure time: 5 seconds



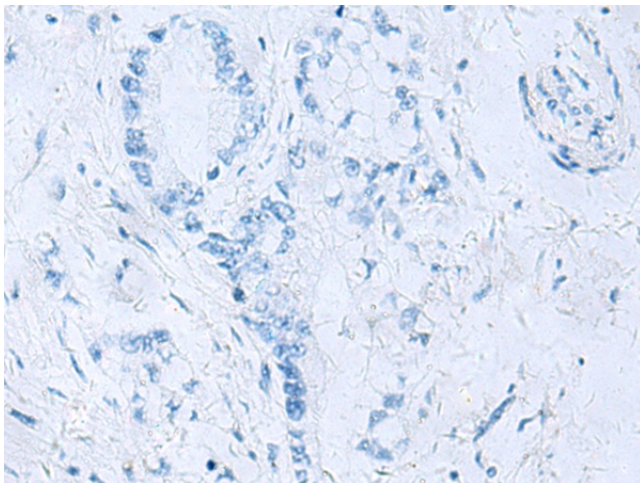
Immunohistochemistry of paraffin-embedded Human cervical cancer tissue using TA370606 (TUBD1 Antibody) at dilution 1/70 (Original magnification: \times 200)



Immunohistochemistry of paraffin-embedded Human cervical cancer tissue using TA370606 (TUBD1 Antibody) at dilution 1/70, treated with fusion protein. (Original magnification: $\times 200$)



Immunohistochemistry of paraffin-embedded Human gastric cancer tissue using TA370606 (TUBD1 Antibody) at dilution 1/70 (Original magnification: $\times 200$)



Immunohistochemistry of paraffin-embedded Human gastric cancer tissue using TA370606 (TUBD1 Antibody) at dilution 1/70, treated with fusion protein. (Original magnification: $\times 200$)