

## Product datasheet for **TA370603S**

### PDHA1 Rabbit Polyclonal Antibody

#### Product data:

Product Type:	Primary Antibodies
Applications:	IHC, WB
Recommended Dilution:	WB: 1000-5000 WB positive control: Mouse brain tissue, HepG2, HeLa, A549 cell, Mouse skeletal muscle tissue, NIH/3T3 cell lysates IHC: 50-300 Positive control: Human cervical cancer Predicted cell location: Cytoplasm
Reactivity:	Human, Mouse, Rat
Host:	Rabbit
Isotype:	IgG
Clonality:	Polyclonal
Immunogen:	Fusion protein of human PDHA1
Formulation:	pH7.4 PBS, 0.05% NaN <sub>3</sub> , 40% Glycerol
Purification:	Antigen affinity purification
Conjugation:	Unconjugated
Storage:	Store at -20°C.
Stability:	1 year
Predicted Protein Size:	43 kDa
Gene Name:	pyruvate dehydrogenase (lipoamide) alpha 1
Database Link:	<a href="#">Entrez Gene 5160 Human P08559</a>



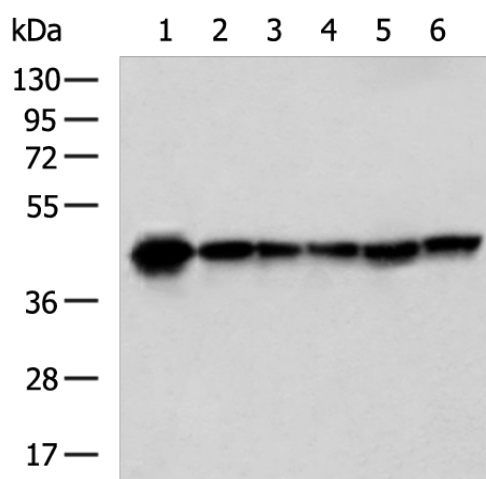
[View online »](#)

**Background:**

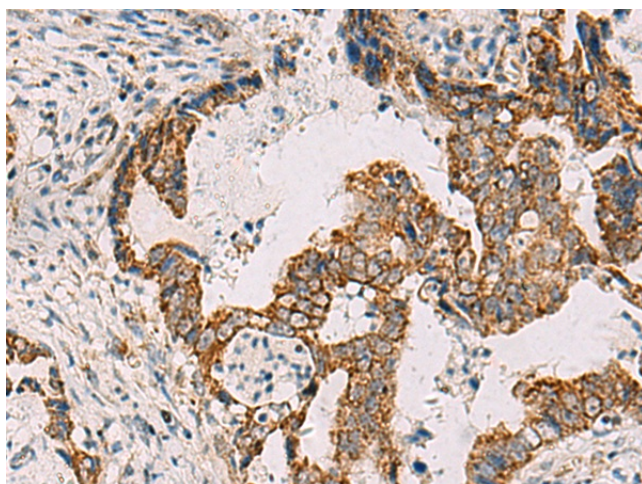
The pyruvate dehydrogenase (PDH) complex is a nuclear-encoded mitochondrial multienzyme complex that catalyzes the overall conversion of pyruvate to acetyl-CoA and CO<sub>2</sub>, and provides the primary link between glycolysis and the tricarboxylic acid (TCA) cycle. The PDH complex is composed of multiple copies of three enzymatic components: pyruvate dehydrogenase (E1), dihydrolipoamide acetyltransferase (E2) and lipoamide dehydrogenase (E3). The E1 enzyme is a heterotetramer of two alpha and two beta subunits. This gene encodes the E1 alpha 1 subunit containing the E1 active site, and plays a key role in the function of the PDH complex. Mutations in this gene are associated with pyruvate dehydrogenase E1-alpha deficiency and X-linked Leigh syndrome. Alternatively spliced transcript variants encoding different isoforms have been found for this gene.

**Synonyms:**

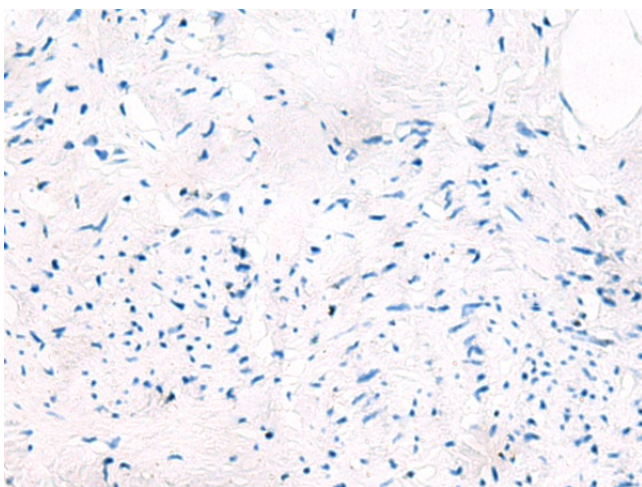
PDHA; PDHCE1A; PHE1A

**Product images:**


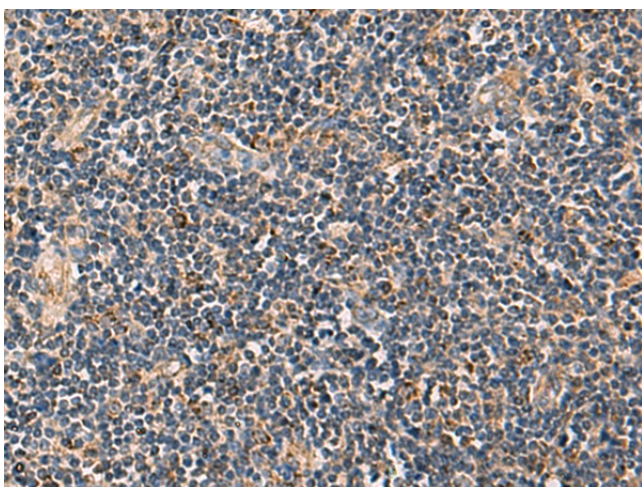
Gel: 8%SDS-PAGE  
 Lysate: 40 µg  
 Lane 1-6: Mouse brain tissue  
 HepG2  
 HeLa  
 A549 cell  
 Mouse skeletal muscle tissue  
 NIH/3T3 cell lysates  
 Primary antibody: [TA370603] (PDHA1 Antibody)  
 at dilution 1/1000  
 Secondary antibody: Goat anti rabbit IgG at  
 1/5000 dilution  
 Exposure time: 1 second



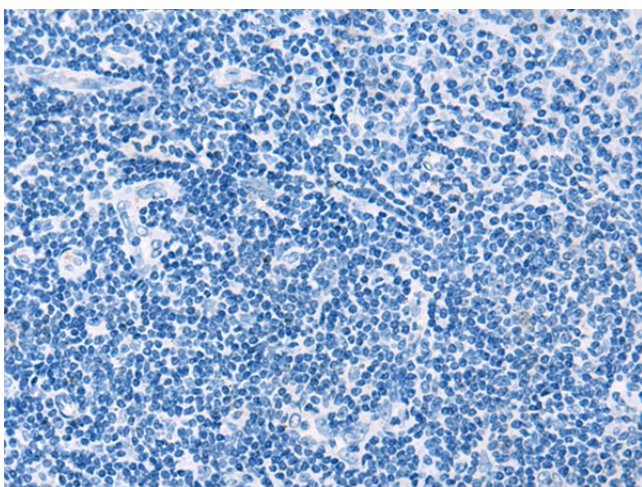
Immunohistochemistry of paraffin-embedded  
 Human cervical cancer tissue using [TA370603]  
 (PDHA1 Antibody) at dilution 1/50 (Original  
 magnification: ×200)



Immunohistochemistry of paraffin-embedded Human cervical cancer tissue using [TA370603] (PDHA1 Antibody) at dilution 1/50, treated with fusion protein. (Original magnification:  $\times 200$ )



Immunohistochemistry of paraffin-embedded Human tonsil tissue using [TA370603] (PDHA1 Antibody) at dilution 1/50 (Original magnification:  $\times 200$ )



Immunohistochemistry of paraffin-embedded Human tonsil tissue using [TA370603] (PDHA1 Antibody) at dilution 1/50, treated with fusion protein. (Original magnification:  $\times 200$ )