

## Product datasheet for **TA370602S**

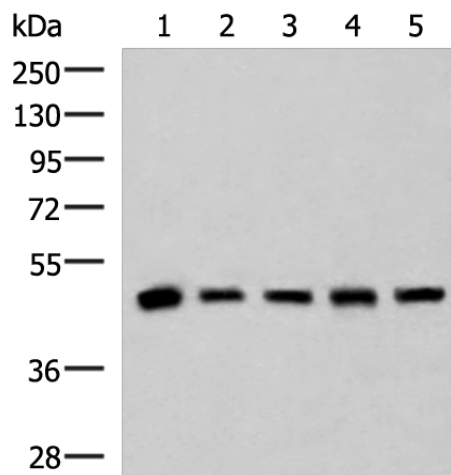
### PCYT2 Rabbit Polyclonal Antibody

#### Product data:

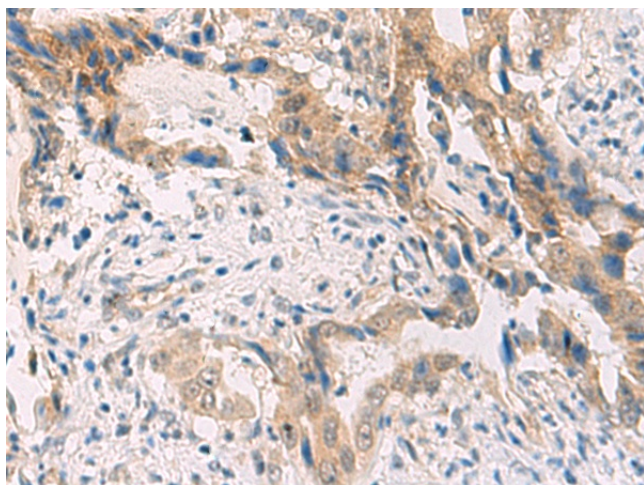
Product Type:	Primary Antibodies
Applications:	IHC, WB
Recommended Dilution:	WB: 1000-5000 WB positive control: Human fetal liver tissue, HepG2, A172, Hela and Jurkat cell lysates IHC: 40-200 Positive control: Human cervical cancer Predicted cell location: Cytoplasm
Reactivity:	Human, Mouse, Rat
Host:	Rabbit
Isotype:	IgG
Clonality:	Polyclonal
Immunogen:	Fusion protein of human PCYT2
Formulation:	pH7.4 PBS, 0.05% NaN <sub>3</sub> , 40% Glycerol
Purification:	Antigen affinity purification
Conjugation:	Unconjugated
Storage:	Store at -20°C.
Stability:	1 year
Predicted Protein Size:	44 kDa
Gene Name:	phosphate cytidyltransferase 2, ethanolamine
Database Link:	<a href="#">Entrez Gene 5833 Human Q99447</a>
Background:	This gene encodes an enzyme that catalyzes the formation of CDP-ethanolamine from CTP and phosphoethanolamine in the Kennedy pathway of phospholipid synthesis. Alternative splicing results in multiple transcript variants.
Synonyms:	ET



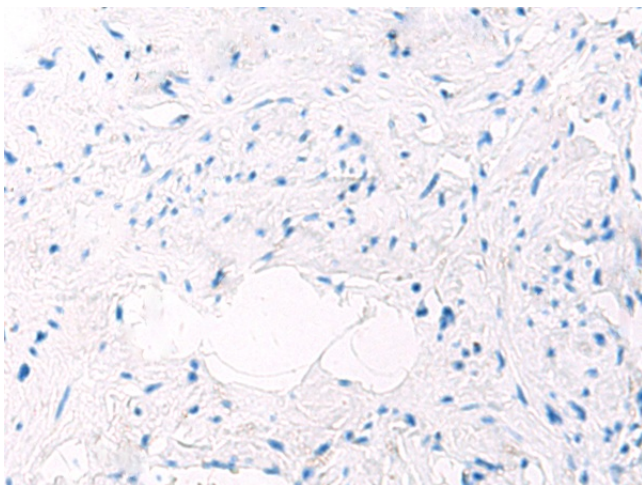
[View online »](#)

**Product images:**

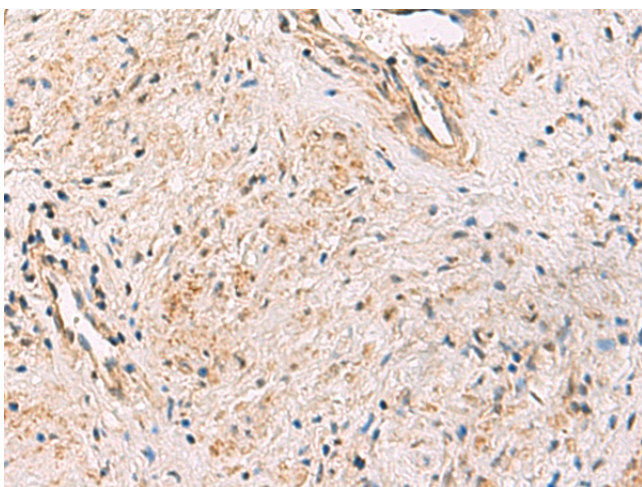
Gel: 8%SDS-PAGE  
Lysate: 40  $\mu$ g  
Lane 1-5: Human fetal liver tissue  
HepG2  
A172  
Hela and Jurkat cell lysates  
Primary antibody: [TA370602] (PCYT2 Antibody)  
at dilution 1/800  
Secondary antibody: Goat anti rabbit IgG at  
1/5000 dilution  
Exposure time: 5 seconds



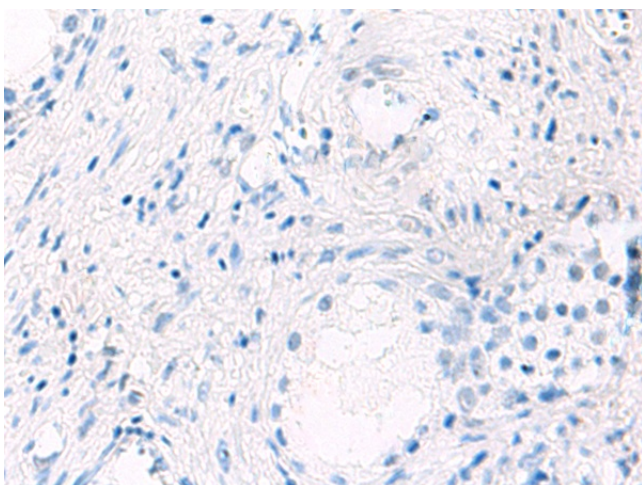
Immunohistochemistry of paraffin-embedded  
Human cervical cancer tissue using [TA370602]  
(PCYT2 Antibody) at dilution 1/55 (Original  
magnification:  $\times 200$ )



Immunohistochemistry of paraffin-embedded Human cervical cancer tissue using [TA370602] (PCYT2 Antibody) at dilution 1/55, treated with fusion protein. (Original magnification: ×200)



Immunohistochemistry of paraffin-embedded Human prostate cancer tissue using [TA370602] (PCYT2 Antibody) at dilution 1/55 (Original magnification: ×200)



Immunohistochemistry of paraffin-embedded Human prostate cancer tissue using [TA370602] (PCYT2 Antibody) at dilution 1/55, treated with fusion protein. (Original magnification: ×200)