

## Product datasheet for **TA370601**

### **GABPB2 (GABPB1) Rabbit Polyclonal Antibody**

#### **Product data:**

<b>Product Type:</b>	Primary Antibodies
<b>Applications:</b>	IHC, WB
<b>Recommended Dilution:</b>	WB: 1000-5000 WB positive control: A549 cell lysate IHC: 70-350 Positive control: Human esophagus cancer Predicted cell location: Nucleus
<b>Reactivity:</b>	Human, Mouse
<b>Host:</b>	Rabbit
<b>Isotype:</b>	IgG
<b>Clonality:</b>	Polyclonal
<b>Immunogen:</b>	Fusion protein of human GABPB1
<b>Formulation:</b>	pH7.4 PBS, 0.05% NaN <sub>3</sub> , 40% Glycerol
<b>Concentration:</b>	lot specific
<b>Purification:</b>	Antigen affinity purification
<b>Conjugation:</b>	Unconjugated
<b>Storage:</b>	Store at -20°C.
<b>Stability:</b>	1 year
<b>Predicted Protein Size:</b>	42 kDa
<b>Gene Name:</b>	GA binding protein transcription factor beta subunit 1
<b>Database Link:</b>	<a href="#">Entrez Gene 2553 Human Q06547</a>

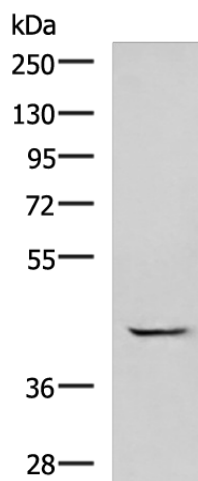
**Background:** This gene encodes the GA-binding protein transcription factor, beta subunit. This protein forms a tetrameric complex with the alpha subunit, and stimulates transcription of target genes. The encoded protein may be involved in activation of cytochrome oxidase expression and nuclear control of mitochondrial function. The crystal structure of a similar protein in mouse has been resolved as a ternary protein complex. Multiple transcript variants encoding distinct isoforms have been identified for this gene.



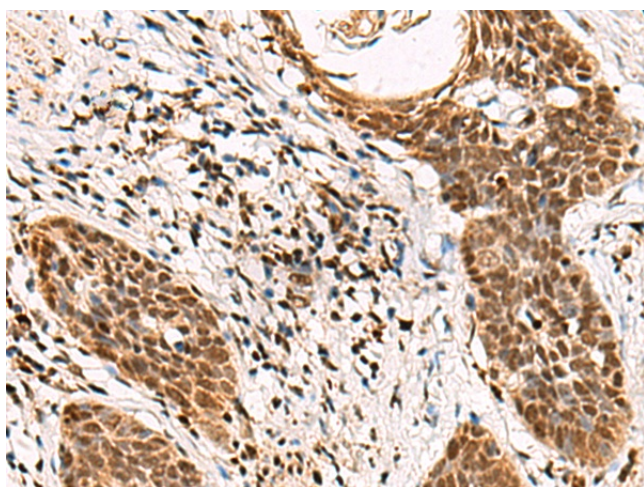
[View online »](#)

**Synonyms:** BABPB2; E4TF1; E4TF1-47; E4TF1-53; E4TF1B; GABPB; GABPB-1; GABPB-2; GABPB2; NRF2B1; NRF2B2

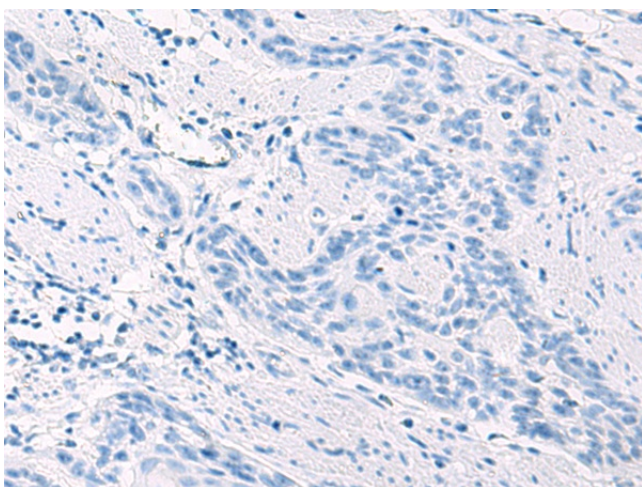
**Product images:**



Gel: 8%SDS-PAGE  
 Lysate: 40 µg  
 Lane: A549 cell lysate  
 Primary antibody: TA370601 (GABPB1 Antibody) at dilution 1/1000  
 Secondary antibody: Goat anti rabbit IgG at 1/5000 dilution  
 Exposure time: 2 minutes



Immunohistochemistry of paraffin-embedded Human esophagus cancer tissue using TA370601 (GABPB1 Antibody) at dilution 1/70 (Original magnification: ×200)



Immunohistochemistry of paraffin-embedded Human esophagus cancer tissue using TA370601 (GABPB1 Antibody) at dilution 1/70, treated with fusion protein. (Original magnification: ×200)