

Product datasheet for **TA370597S**

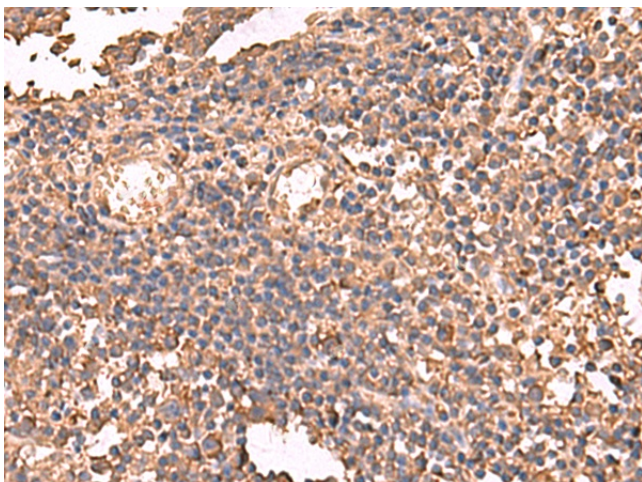
LDHAL6B Rabbit Polyclonal Antibody

Product data:

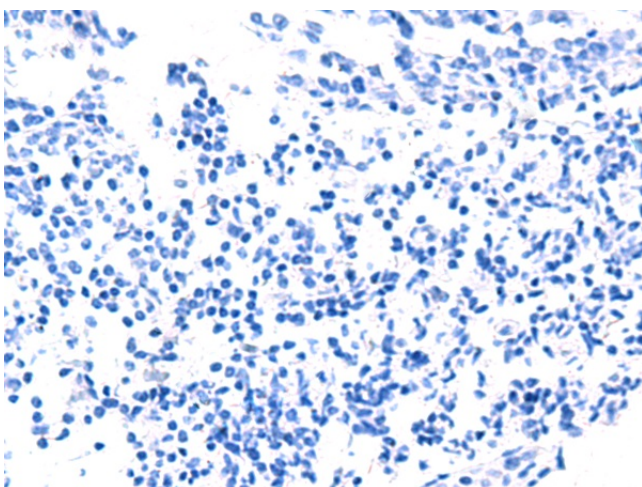
| | |
|-----------------------|---|
| Product Type: | Primary Antibodies |
| Applications: | IHC |
| Recommended Dilution: | IHC: 50-300 Positive control: Human tonsil Predicted cell location: Cytoplasm |
| Reactivity: | Human |
| Host: | Rabbit |
| Isotype: | IgG |
| Clonality: | Polyclonal |
| Immunogen: | Fusion protein of human LDHAL6B |
| Formulation: | pH7.4 PBS, 0.05% NaN ₃ , 40% Glycerol |
| Purification: | Antigen affinity purification |
| Conjugation: | Unconjugated |
| Storage: | Store at -20°C. |
| Stability: | 1 year |
| Gene Name: | lactate dehydrogenase A like 6B |
| Database Link: | Entrez Gene 92483 Human Q9BYZ2 |
| Background: | LDHAL6B belongs to the LDH/MDH superfamily. LDH family. The specific function of the protein remains unknown. |
| Synonyms: | LDH6B; LDHAL6; LDHL |



[View online »](#)

Product images:

Immunohistochemistry of paraffin-embedded Human tonsil tissue using [TA370597] (LDHAL6B Antibody) at dilution 1/65 (Original magnification: ×200)



Immunohistochemistry of paraffin-embedded Human tonsil tissue using [TA370597] (LDHAL6B Antibody) at dilution 1/65, treated with fusion protein. (Original magnification: ×200)