

## Product datasheet for **TA370595S**

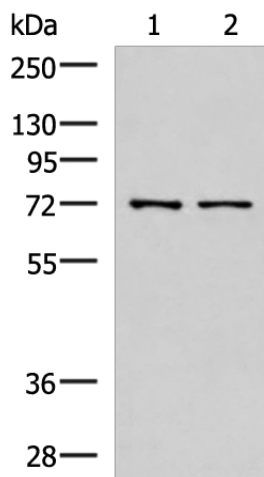
### MKS1 Rabbit Polyclonal Antibody

#### Product data:

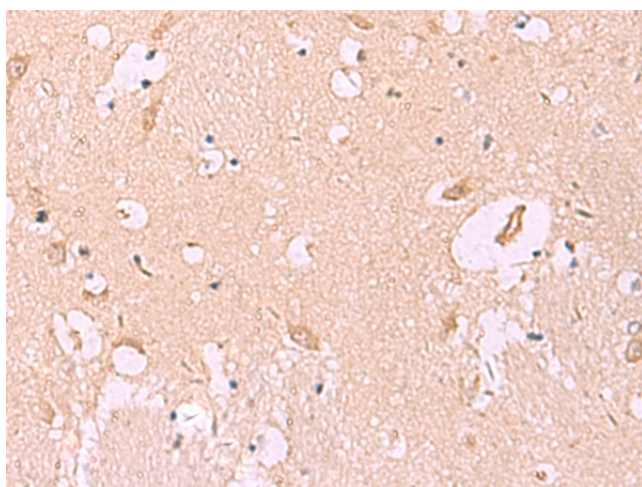
Product Type:	Primary Antibodies
Applications:	IHC, WB
Recommended Dilution:	WB: 500-2000 WB positive control: Mouse liver tissue and Jurkat cell lysates IHC: 30-150 Positive control: Human brain Predicted cell location: Cytoplasm
Reactivity:	Human, Mouse, Rat
Host:	Rabbit
Isotype:	IgG
Clonality:	Polyclonal
Immunogen:	Fusion protein of human MKS1
Formulation:	pH7.4 PBS, 0.05% NaN <sub>3</sub> , 40% Glycerol
Purification:	Antigen affinity purification
Conjugation:	Unconjugated
Storage:	Store at -20°C.
Stability:	1 year
Predicted Protein Size:	65 kDa
Gene Name:	Meckel syndrome, type 1
Database Link:	<a href="#">Entrez Gene 54903 Human Q9NXB0</a>
Background:	The protein encoded by this gene localizes to the basal body and is required for formation of the primary cilium in ciliated epithelial cells. Mutations in this gene result in Meckel syndrome type 1 and in Bardet-Biedl syndrome type 13. Multiple transcript variants encoding different isoforms have been found for this gene.
Synonyms:	BBS13; FLJ20345; MES; MKS



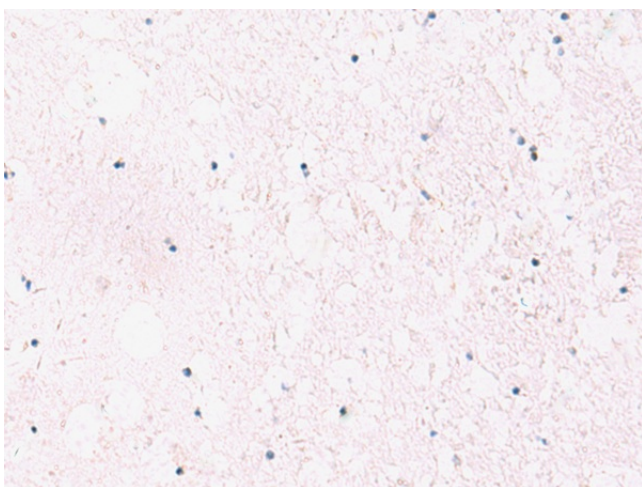
[View online »](#)

**Product images:**


Gel: 8%SDS-PAGE  
 Lysate: 40 µg  
 Lane 1-2: Mouse liver tissue and Jurkat cell lysates  
 Primary antibody: [TA370595] (MKS1 Antibody) at dilution 1/700  
 Secondary antibody: Goat anti rabbit IgG at 1/5000 dilution  
 Exposure time: 40 seconds



Immunohistochemistry of paraffin-embedded Human brain tissue using [TA370595] (MKS1 Antibody) at dilution 1/50 (Original magnification: ×200)



Immunohistochemistry of paraffin-embedded Human brain tissue using [TA370595] (MKS1 Antibody) at dilution 1/50, treated with fusion protein. (Original magnification: x200)